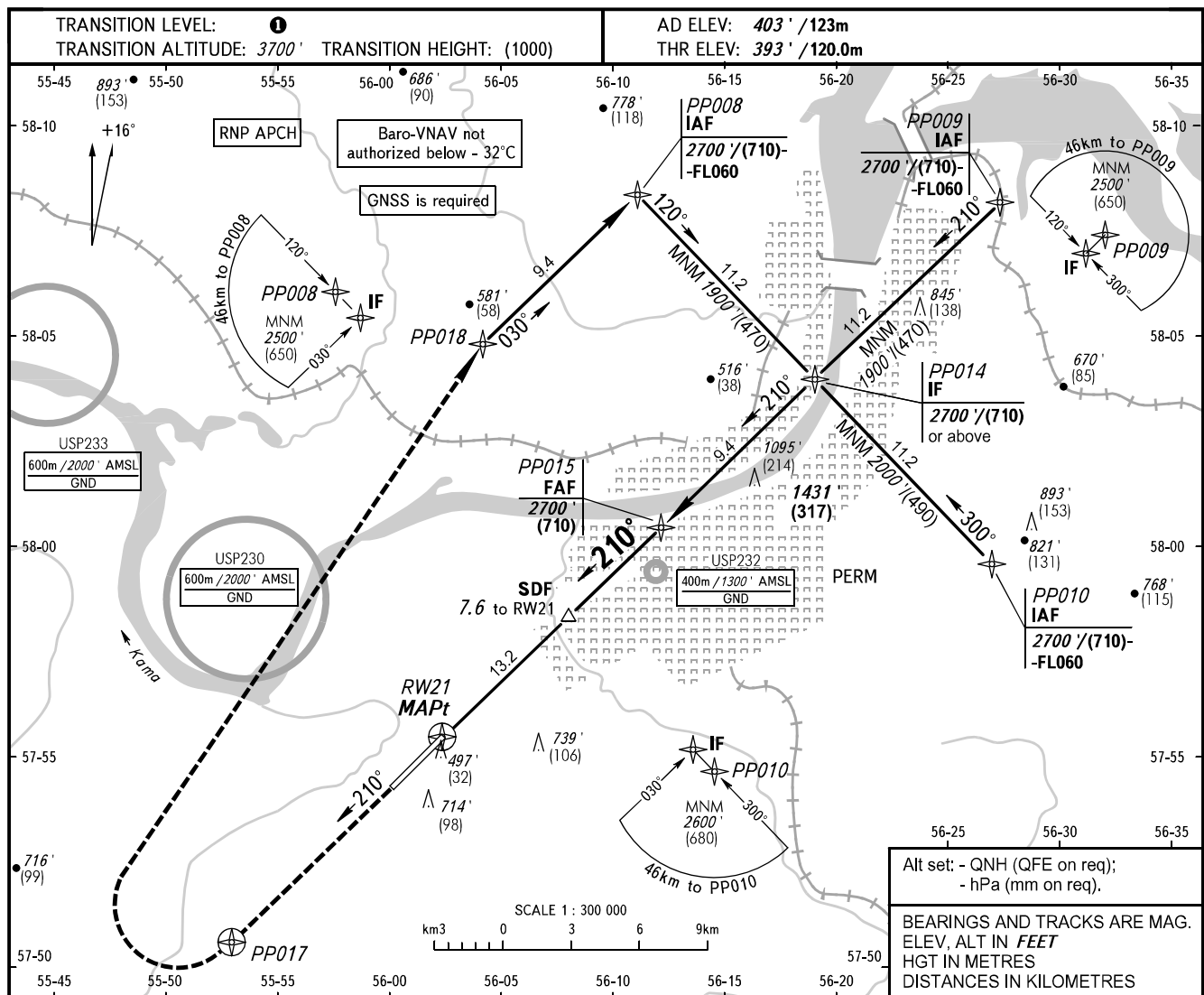


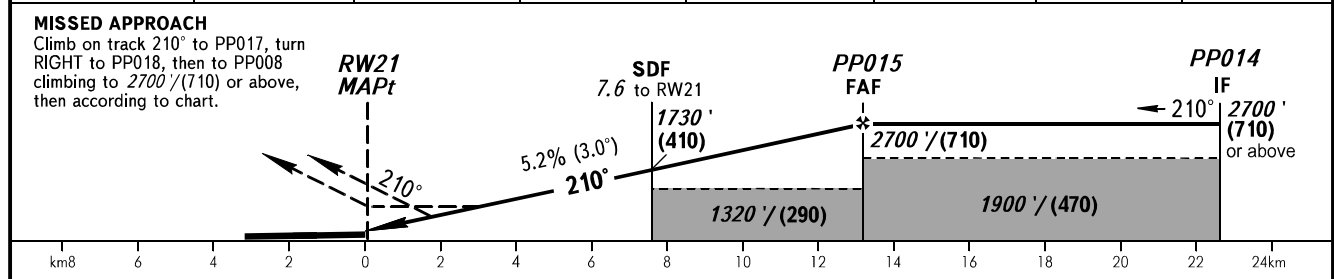
**INSTRUMENT
APPROACH
CHART - ICAO**

RADAR	121.700
START	124.000

**PERM, RUSSIA
BOLSHOE SAVINO
RNP RWY 21**



DIST to RW21	2.0	4.0	6.0	8.0	10.0	12.0	13.2
ALTITUDE/HEIGHT	790' (130)	1130' (230)	1470' (340)	1810' (440)	2150' (540)	2500' (650)	2700' (710)



OCA(H)		A	B	C	D						
Straight-in Approach	LNAV/VNAV	632' (239') (73)	645' (252') (77)	653' (260') (80)	663' (270') (83)						
	LNAV	750' (360') (110)	750' (360') (110)	750' (360') (110)	750' (360') (110)						
Circling		800' (400') (125)	930' (530') (165)	1080' (680') (210)	1170' (770') (235)						
GROUND SPEED		km/h	150	180	210	240	270	300	330	360	390
RATE OF DESCENT		m/s	2.2	2.6	3.0	3.5	3.9	4.3	4.8	5.2	5.6
		ft/min	427	512	597	682	768	853	938	1024	1109

TRANSITION LEVEL:

- FLO50 when QNH is 1013 hPa (760mm mercury column) or above;
- FLO60 when QNH is 977 hPa (733mm mercury column) or above, but less than 1013 hPa (760mm mercury column);
- FLO70 when QNH is less than 977 hPa (733mm mercury column).

WARNING
Visual manoeuvring SOUTH-EAST of AD for CAT C, D ACFT is PROHIBITED.