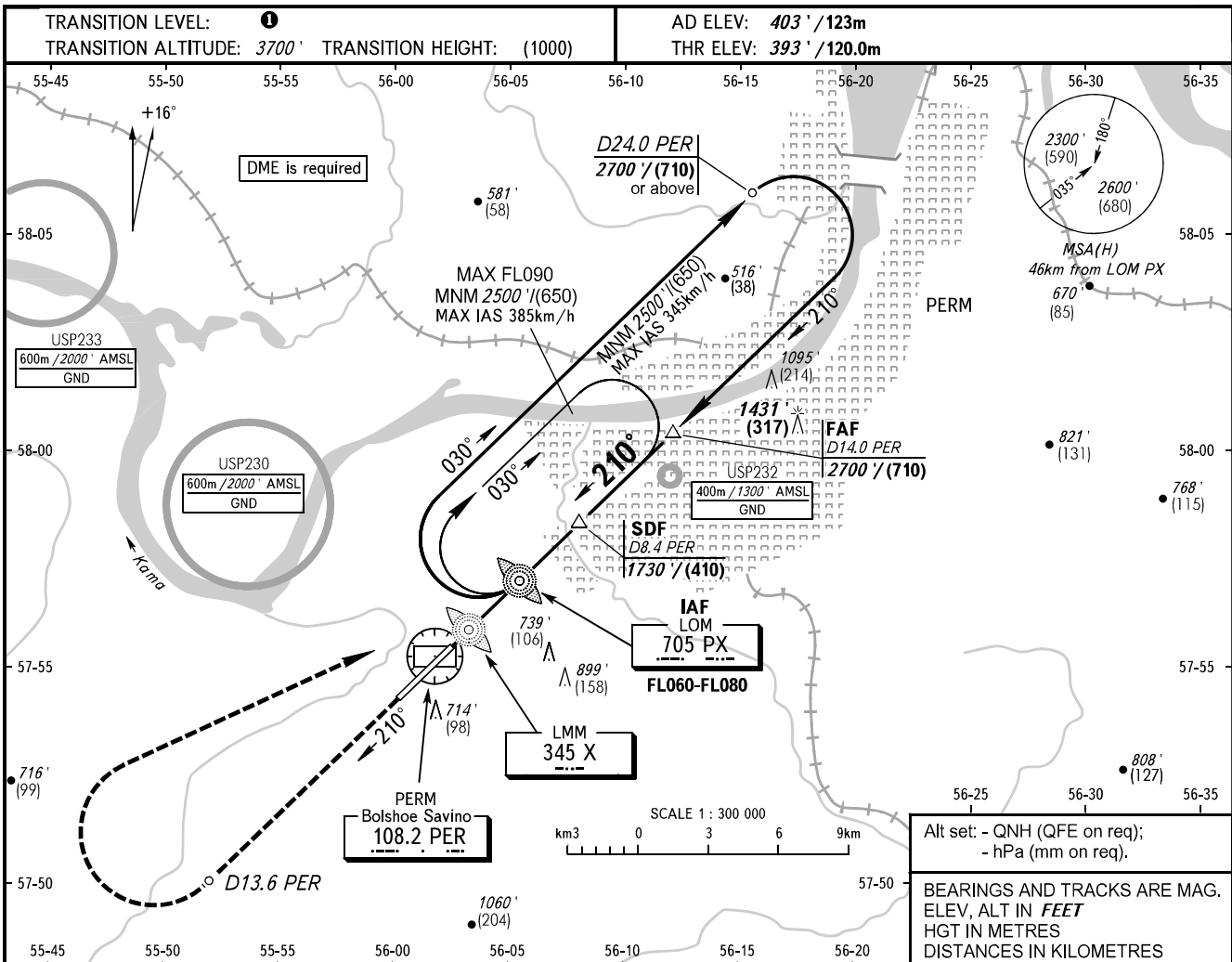


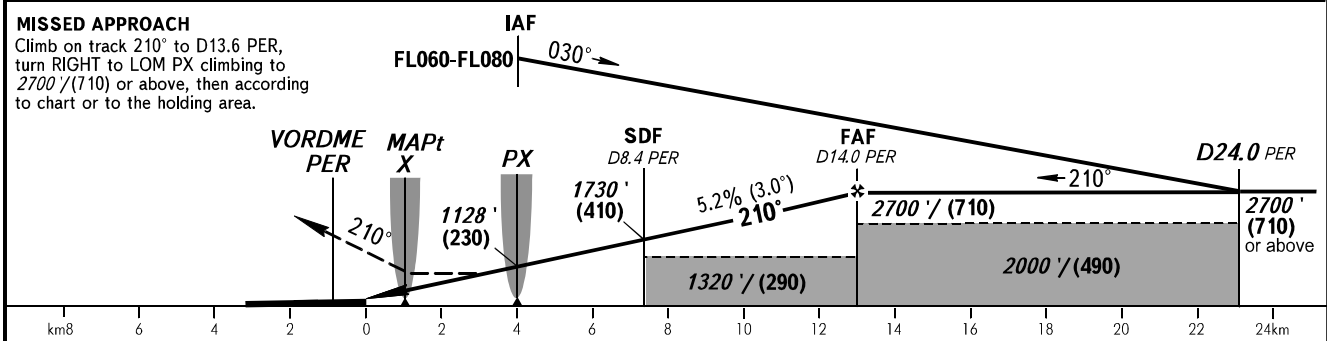
**INSTRUMENT
APPROACH
CHART - ICAO**

RADAR	121.700
START	124.000

**PERM, RUSSIA
BOLSHOE SAVINO
NDB Z RWY 21**



DME PER	4.0	6.0	8.0	10.0	12.0	14.0
ALTITUDE/HEIGHT	990' / (190)	1330' / (290)	1670' / (400)	2010' / (500)	2350' / (600)	2700' / (710)



OCA(H)		A	B	C	D						
Straight-in Approach	With SDF	750' (360') (110)	750' (360') (110)	750' (360') (110)	750' (360') (110)						
	WO SDF	1550' (1160') (355)	1550' (1160') (355)	1550' (1160') (355)	1550' (1160') (355)						
Circling		800' (400') (125)	930' (530') (165)	1080' (680') (210)	1170' (770') (235)						
GROUND SPEED		km/h	150	180	210	240	270	300	330	360	390
RATE OF DESCENT		m/s	2.2	2.6	3.0	3.5	3.9	4.3	4.8	5.2	5.6
		ft/min	427	512	597	682	768	853	938	1024	1109

① TRANSITION LEVEL:
- FL050 when QNH is 1013 hPa (760mm mercury column) or above;
- FL060 when QNH is 977 hPa (733mm mercury column) or above, but less than 1013 hPa (760mm mercury column);
- FL070 when QNH is less than 977 hPa (733mm mercury column).

WARNING
1. MAPt at LMM X.
Timing not authorized for defining MAPt.
2. Visual manoeuvring SOUTH-EAST of AD for CAT C, D ACFT is PROHIBITED.

CHANGE: OCA(H), Heading