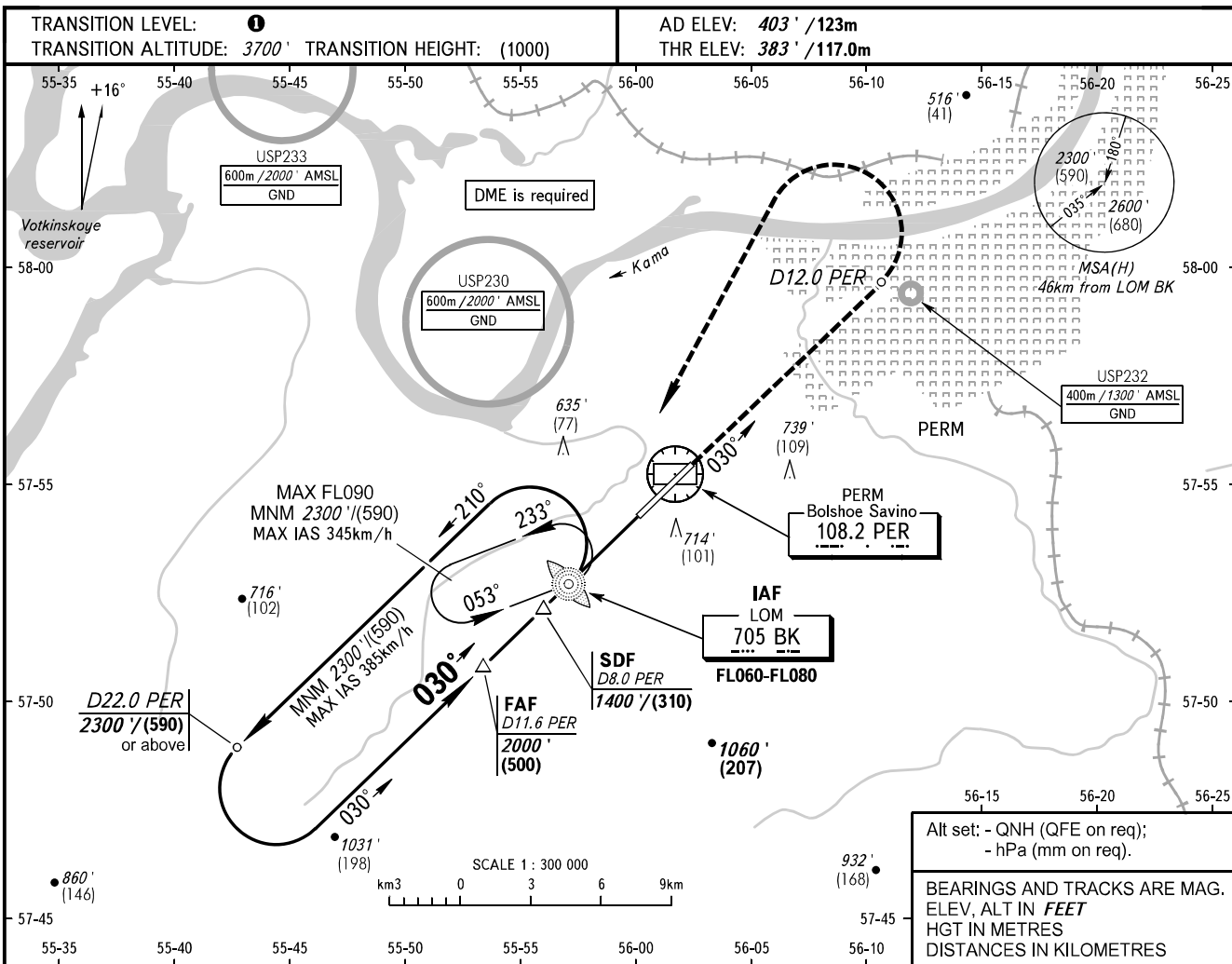


**INSTRUMENT  
APPROACH  
CHART - ICAO**

RADAR	121.700
START	124.000

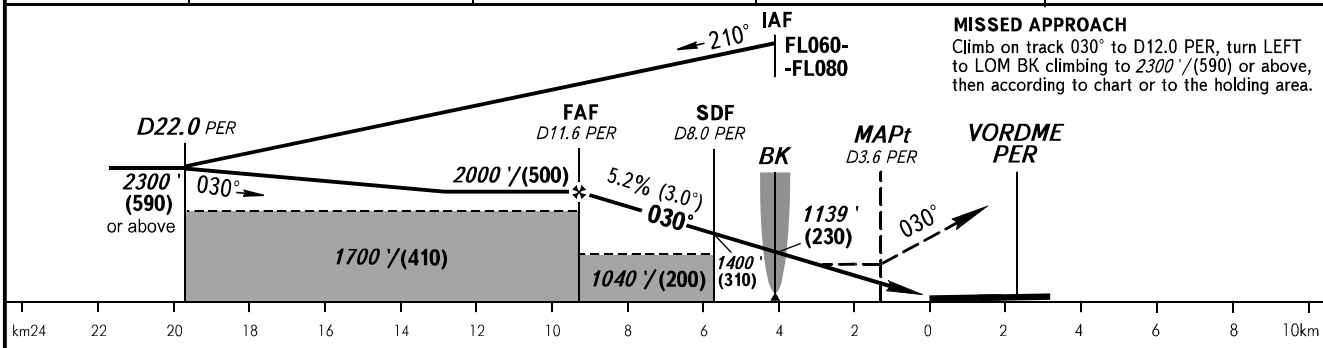
**PERM, RUSSIA  
BOLSHOE SAVINO  
NDB Z RWY 03**



Alt set: - QNH (QFE on req);  
- hPa (mm on req).

BEARINGS AND TRACKS ARE MAG.  
ELEV, ALT IN FEET  
HGT IN METRES  
DISTANCES IN KILOMETRES

DME PER	11.6	10.0	8.0	6.0
ALTITUDE/HEIGHT	2000'/(500)	1740'/(420)	1400'/(310)	1060'/(210)



**MISSED APPROACH**  
Climb on track 030° to D12.0 PER, turn LEFT to LOM BK climbing to 2300'/(590) or above, then according to chart or to the holding area.

OCA(H)		A	B	C	D
Straight-in Approach	With SDF	830' (450') (140)	830' (450') (140)	830' (450') (140)	830' (450') (140)
	WO SDF	870' (490') (150)	870' (490') (150)	870' (490') (150)	870' (490') (150)
Circling		800' (400') (125)	930' (530') (165)	1080' (680') (210)	1170' (770') (235)

**TRANSITION LEVEL:**  
- FL050 when QNH is 1013 hPa (760mm mercury column) or above;  
- FL060 when QNH is 977 hPa (733mm mercury column) or above, but less than 1013 hPa (760mm mercury column);  
- FL070 when QNH is less than 977 hPa (733mm mercury column).

**WARNING**  
1. MAPt at D3.6 PER.  
Timing not authorized for defining MAPt.  
2. Visual manoeuvring SOUTH-EAST of AD for CAT C, D ACFT is PROHIBITED.

GROUND SPEED	km/h	150	180	210	240	270	300	330	360	390
RATE OF DESCENT	m/s	2.2	2.6	3.0	3.5	3.9	4.3	4.8	5.2	5.6
	ft/min	427	512	597	682	768	853	938	1024	1109

CHANGE: OCA(H), Heading