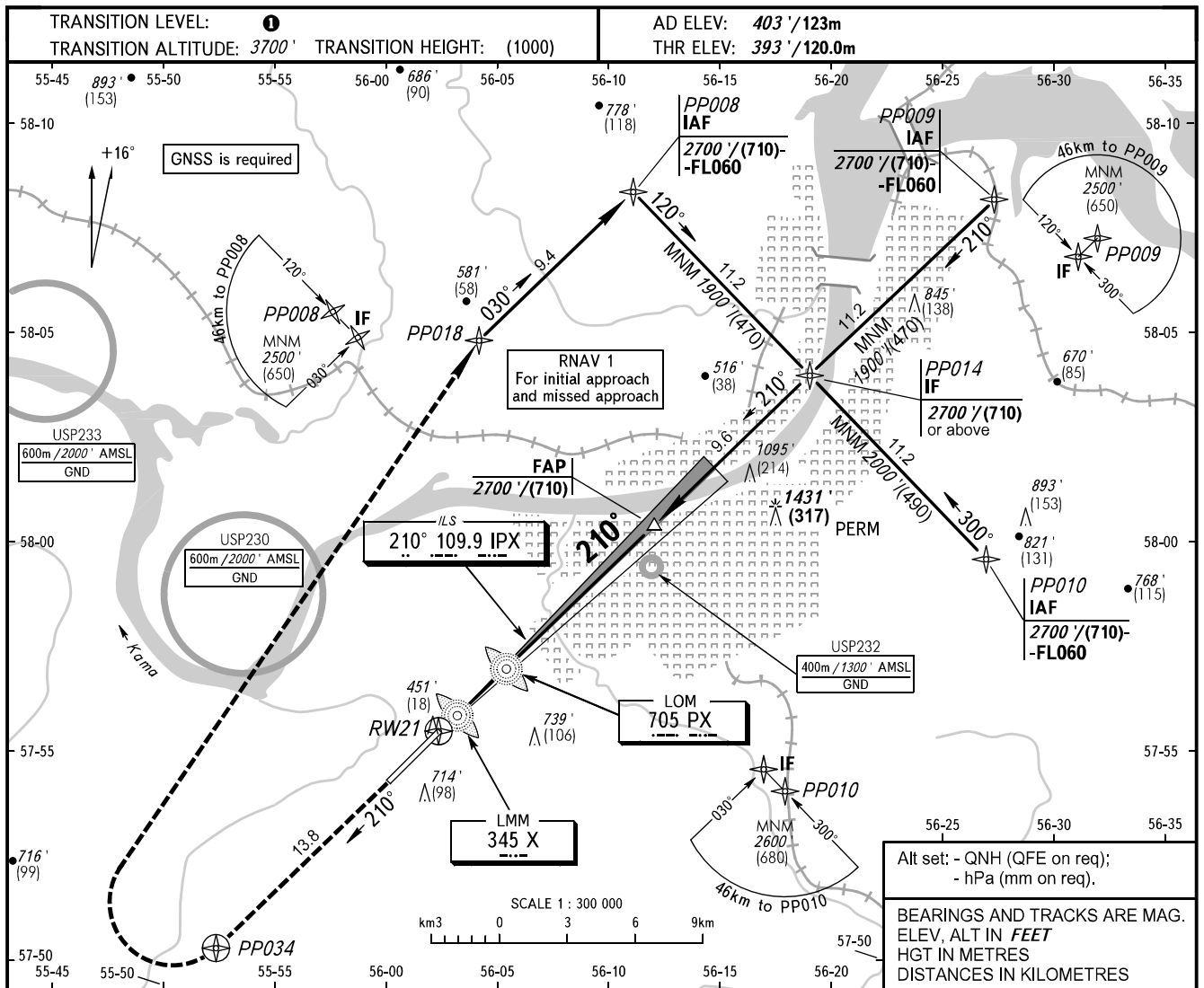


**INSTRUMENT
APPROACH
CHART - ICAO**

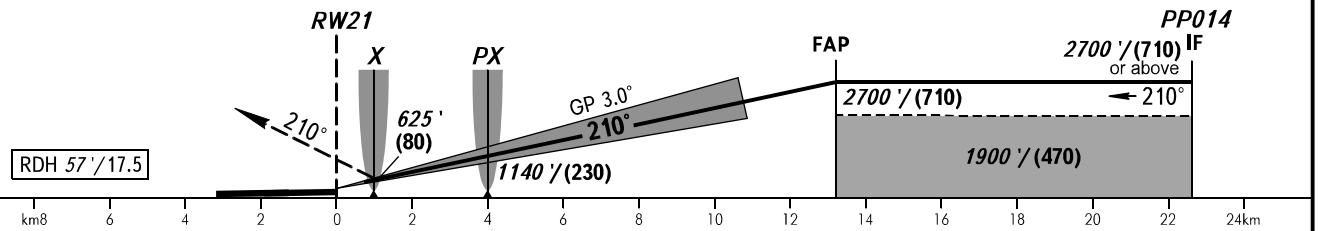
RADAR 121.700
START 124.000

PERM, RUSSIA
BOLSHOE SAVINO
ILS Y CAT I RWY 21



MISSED APPROACH

Climb on track 210° to PP034, turn RIGHT to PP018, then to PP008 climbing to 2700' / (710) or above, then according to chart.



OCA(H)		A	B	C	D						
Straight-in Approach	CAT I	537' (144') (44)	546' (153') (47)	557' (164') (50)	570' (177') (54)						
	Circling	800' (400') (125)	930' (530') (165)	1080' (680') (210)	1170' (770') (235)						
GROUND SPEED		km/h	150	180	210	240	270	300	330	360	390
RATE OF DESCENT		m/s	2.2	2.6	3.0	3.5	3.9	4.3	4.8	5.2	5.6
		ft/min	427	512	597	682	768	853	938	1024	1109

① **TRANSITION LEVEL:**
- FL050 when QNH is 1013 hPa (760mm mercury column) or above;
- FL060 when QNH is 977 hPa (733mm mercury column) or above, but less than 1013 hPa (760mm mercury column);
- FL070 when QNH is less than 977 hPa (733mm mercury column).

Visual manoeuvring SOUTH-EAST of AD for CAT C, D ACFT is PROHIBITED.

Visual manoeuvring SOUTH-EAST of AD for CAT C, D ACFT is PROHIBITED.