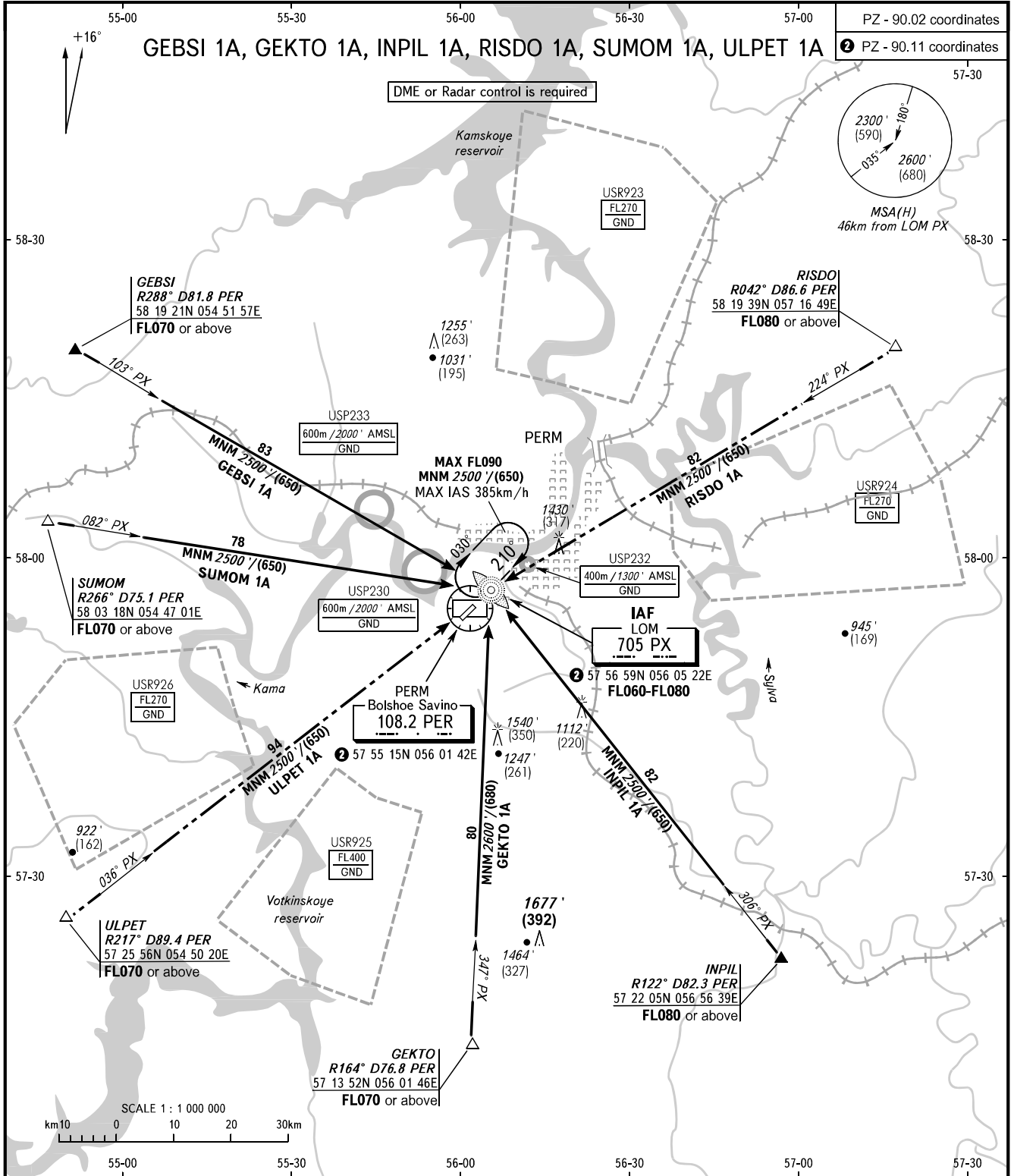


STANDARD ARRIVAL CHART  
INSTRUMENT (STAR) - ICAO

PERM, RUSSIA  
BOLSHOE SAVINO  
RWY 21

TRANSITION LEVEL:  
1



APPROACH 127.100  
RADAR 121.700

1 TRANSITION LEVEL:  
- FL050 when QNH is 1013 hPa (760mm mercury column) or above;  
- FL060 when QNH is 977 hPa (733mm mercury column) or above, but less than 1013 hPa (760mm mercury column);  
- FL070 when QNH is less than 977 hPa (733mm mercury column).

WARNING:  
1. GEKTO 1A is not AVBL when USP925 is active.  
2. SUMOM 1A is not AVBL when USP926 is active.

BEARINGS AND TRACKS ARE MAGNETIC  
ALTITUDES AND ELEVATIONS IN FEET  
HEIGHTS IN METRES  
DISTANCES IN KILOMETRES

Alt set; - QNH (QFE on req);  
- hPa (mm on req).