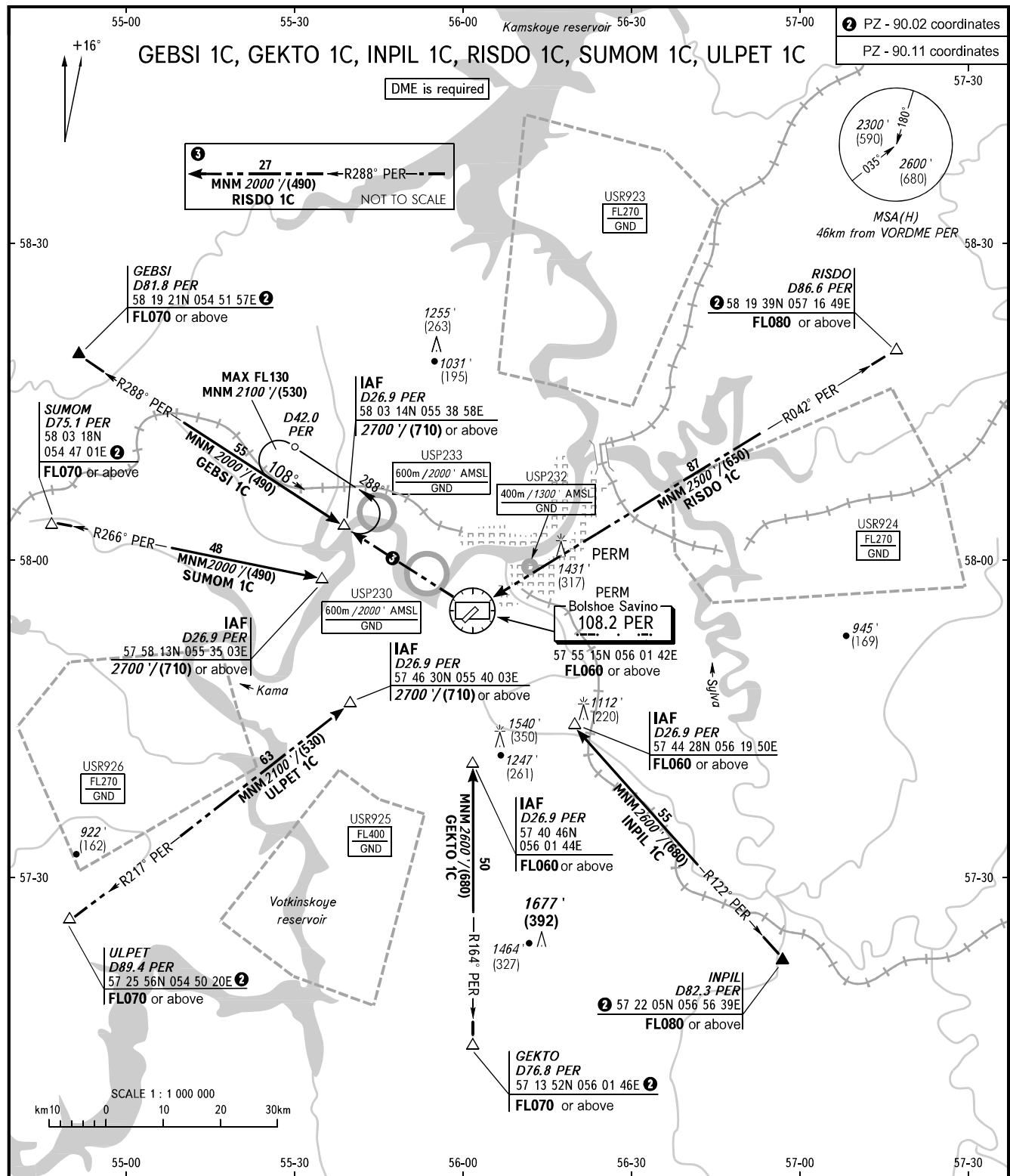


STANDARD ARRIVAL CHART  
INSTRUMENT (STAR) - ICAO

PERM, RUSSIA  
BOLSHOE SAVINO  
RWY 21

TRANSITION LEVEL:  
①



APPROACH	127.100
RADAR	121.700
BEARINGS AND TRACKS ARE MAGNETIC ALTITUDES AND ELEVATIONS IN FEET HEIGHTS IN METRES DISTANCES IN KILOMETRES	
Alt set: - QNH (QFE on req); - hPa (mm on req).	

① TRANSITION LEVEL:  
- FL050 when QNH is 1013 hPa (760mm mercury column) or above;  
- FL060 when QNH is 977 hPa (733mm mercury column) or above,  
but less than 1013 hPa (760mm mercury column);  
- FL070 when QNH is less than 977 hPa (733mm mercury column).

**WARNING**  
GEKTO 1C is not AVBL when USR925 is active.