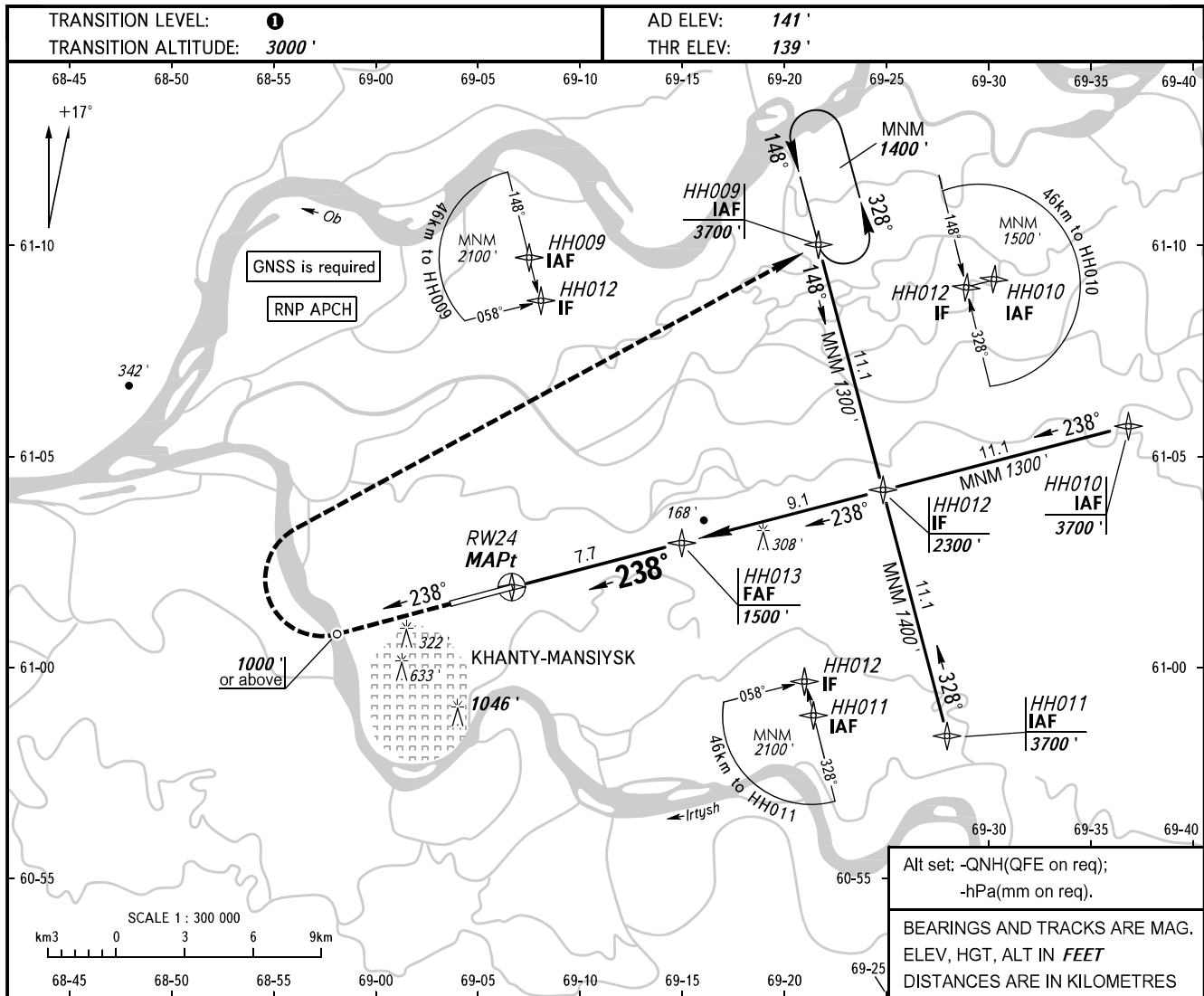


**INSTRUMENT  
APPROACH  
CHART - ICAO**

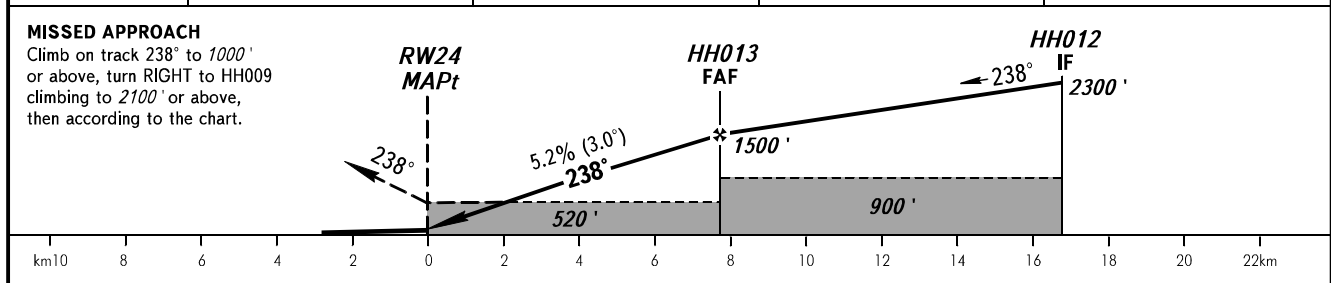
KHANTYM TOWER **118.100**  
KHANTYM RADAR **120.400**

**KHANTY-MANSIYSK, RUSSIA**  
KHANTY-MANSIYSK  
RNAV RWY 24



Alt set: -QNH(QFE on req);  
-hPa(mm on req).  
BEARINGS AND TRACKS ARE MAG.  
ELEV, HGT, ALT IN FEET  
DISTANCES ARE IN KILOMETRES

DIST to RW24	2.0	4.0	6.0	7.7
ALT 3.0° APCH	540'	880'	1220'	1500'



OCA(H)		A	B	C	D					
Straight-in	LNAV	520' (380')	520' (380')	520' (380')	520' (380')					
	Approach									
Circling		620' (480')	930' (790')	1440' (1300')	1440' (1300')					
Visual manoeuvring over housing areas to the north of the RWY and over the city is PROHIBITED.										
GROUND SPEED	km/h	150	180	210	240	270	300	330	360	390
RATE OF DESCENT	m/s	2.2	2.6	3.0	3.5	3.9	4.3	4.8	5.2	5.6

**1** TRANSITION LEVEL:  
- FL040 when QNH is 760mm mercury column or above;  
- FL050 when QNH is 733mm mercury column or above but less than 760mm mercury column;  
- FL060 when QNH is less than 733mm mercury column.