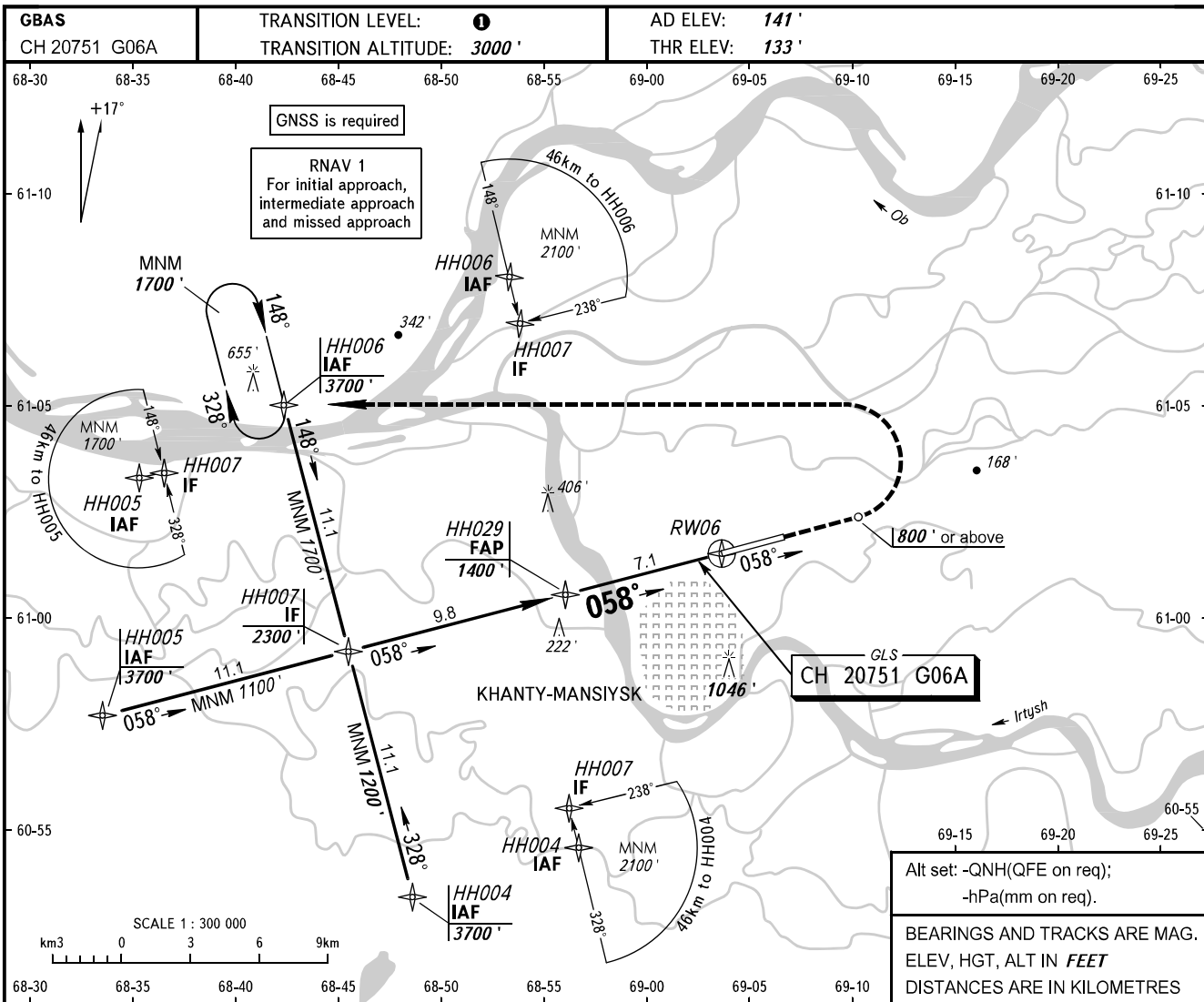


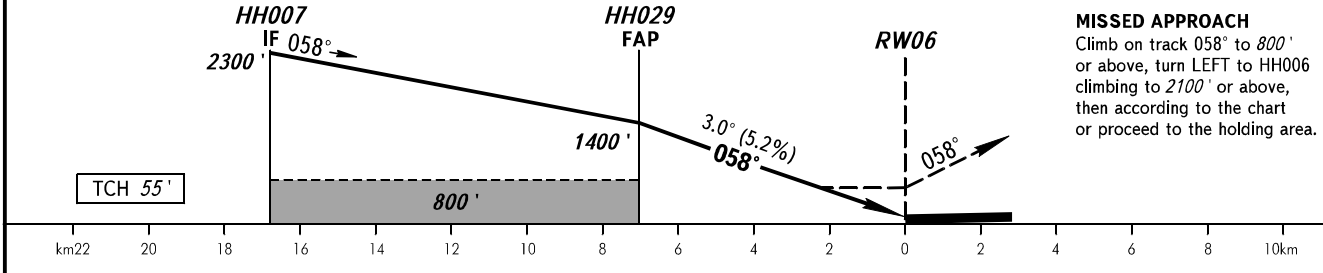
**INSTRUMENT
APPROACH
CHART - ICAO**

KHANTYM TOWER **118.100**
KHANTYM RADAR **120.400**

KHANTY-MANSIYSK, RUSSIA
KHANTY-MANSIYSK
GLS RWY 06 CAT I



DIST to RW06	7.1	6.0	4.0	2.0
ALT 3.0° APCH	1400'	1220'	870'	530'



MISSED APPROACH
Climb on track 058° to 800' or above, turn LEFT to HH006 climbing to 2100' or above, then according to the chart or proceed to the holding area.

OCA(H)		A	B	C	D
Straight-in Approach	CAT I	302' (169')	315' (182')	322' (189')	333' (200')
Circling		620' (480')	930' (790')	1440' (1300')	1440' (1300')
Visual manoeuvring over housing areas to the north of the RWY and over the city is PROHIBITED.					

1 TRANSITION LEVEL:
- FL040 when QNH is 760mm mercury column or above;
- FL050 when QNH is 733mm mercury column or above but less than 760mm mercury column;
- FL060 when QNH is less than 733mm mercury column.

GROUND SPEED	km/h	150	180	210	240	270	300	330	360	390
RATE OF DESCENT	m/s	2.2	2.6	3.0	3.5	3.9	4.3	4.8	5.2	5.6

CHANGE: New chart