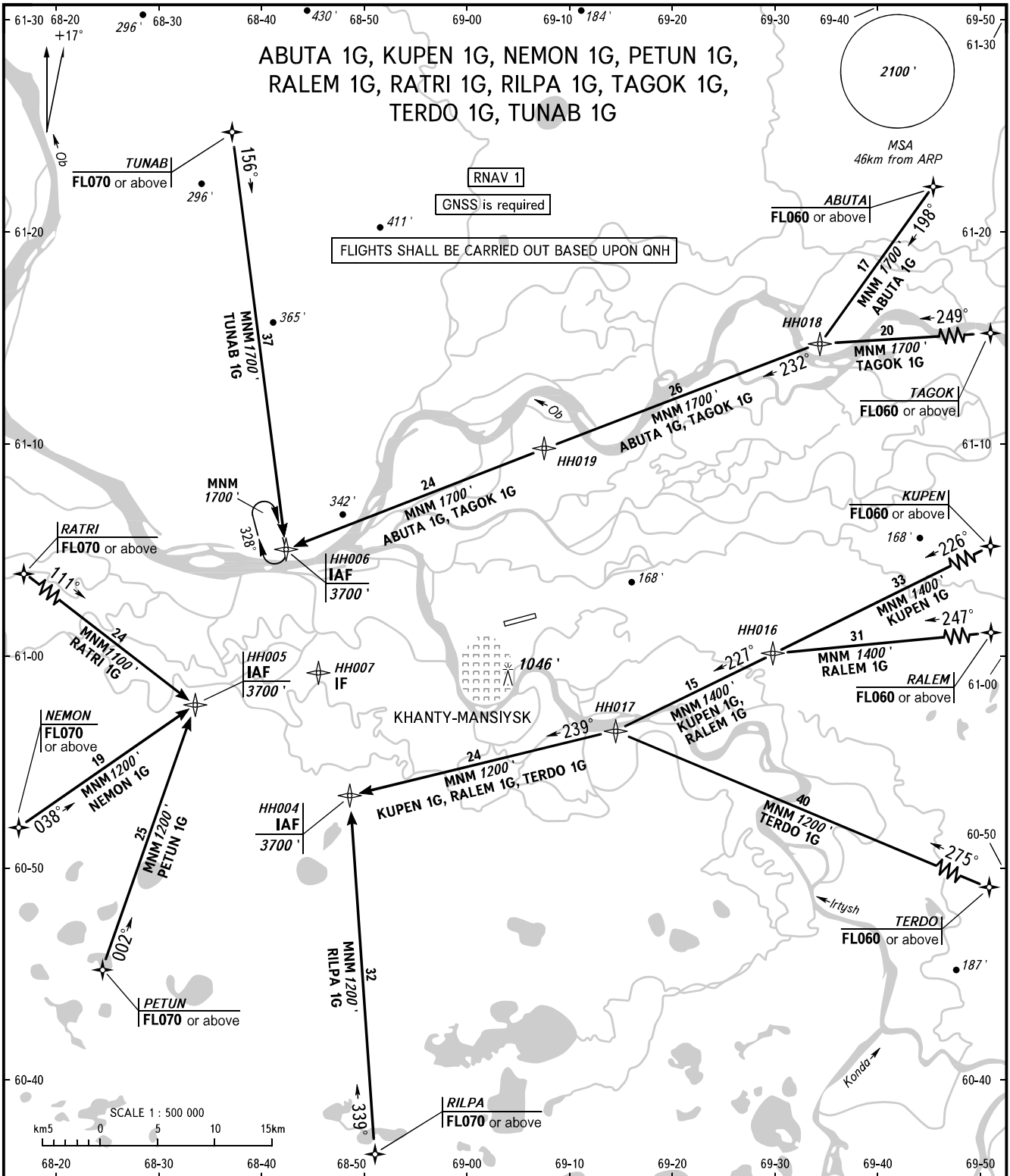


STANDARD ARRIVAL CHART
INSTRUMENT (STAR) - ICAO

KHANTY-MANSIYSK, RUSSIA
KHANTY-MANSIYSK
RNAV RWY 06

TRANSITION
LEVEL : **1**



KHANTYM TOWER **118.100**
KHANTYM RADAR **120.400**

- 1** TRANSITION LEVEL:
- FL040 when QNH is 760mm mercury column or above;
 - FL050 when QNH is 733mm mercury column or above but less than 760mm mercury column;
 - FL060 when QNH is less than 733mm mercury column.

BEARINGS AND TRACKS ARE MAGNETIC
ALTITUDES AND ELEVATIONS ARE IN FEET
DISTANCES ARE IN KILOMETRES

CHANGE: New chart