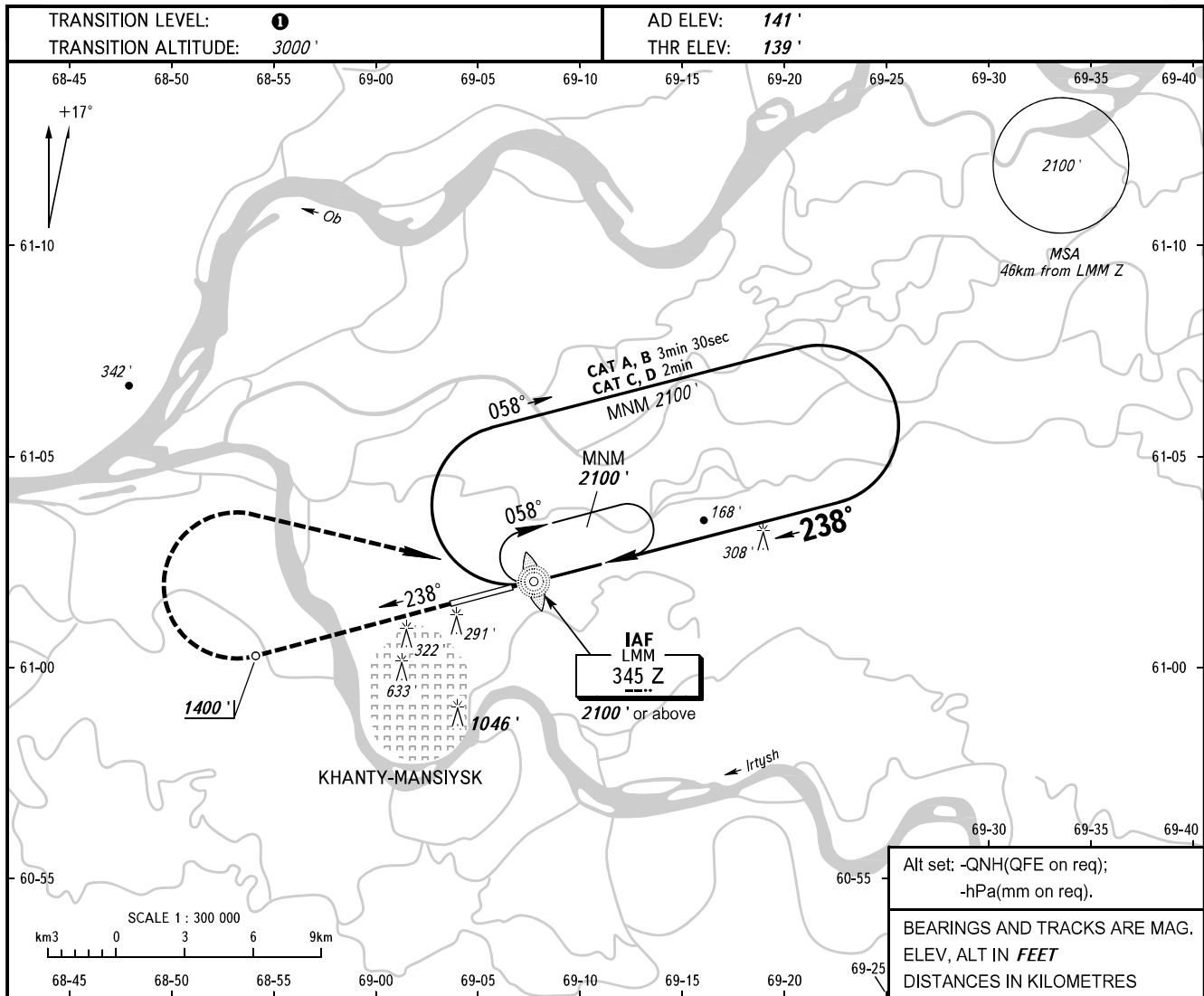


**INSTRUMENT
APPROACH
CHART - ICAO**

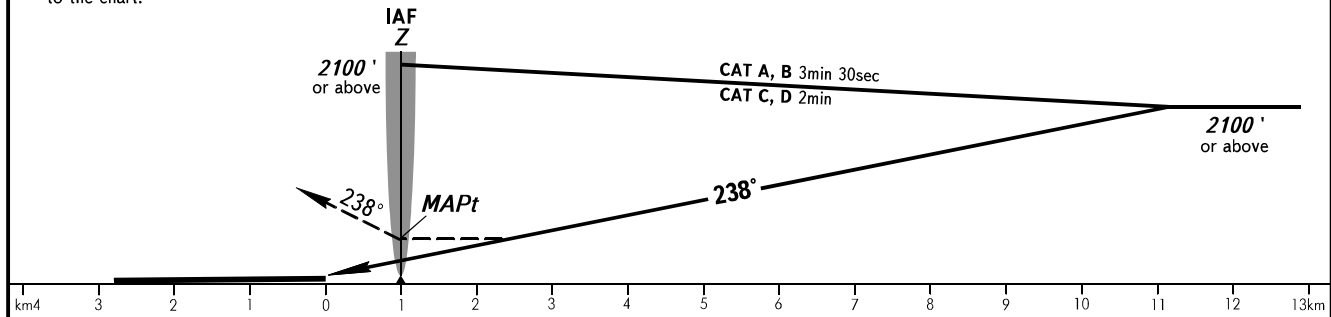
KHANTYM TOWER 118.100
KHANTYM RADAR 120.400

KHANTY-MANSIYSK, RUSSIA
KHANTY-MANSIYSK
NDB Y RWY 24



MISSED APPROACH

Climb on track 238° to 1400',
turn RIGHT to LMM Z
climbing to 2100', then according
to the chart.



OCA(H)		A	B	C	D
Straight-in	Approach	680' (540')	680' (540')	680' (540')	680' (540')
	Circling	680' (540')	930' (790')	1440' (1300')	1440' (1300')
Visual manoeuvring over housing areas to the north of the RWY and over the city is PROHIBITED.					

- 1** TRANSITION LEVEL:
- FL040 when QNH is 760mm mercury column or above;
 - FL050 when QNH is 733mm mercury column or above, but less than 760mm mercury column;
 - FL060 when QNH is less than 733mm mercury column.