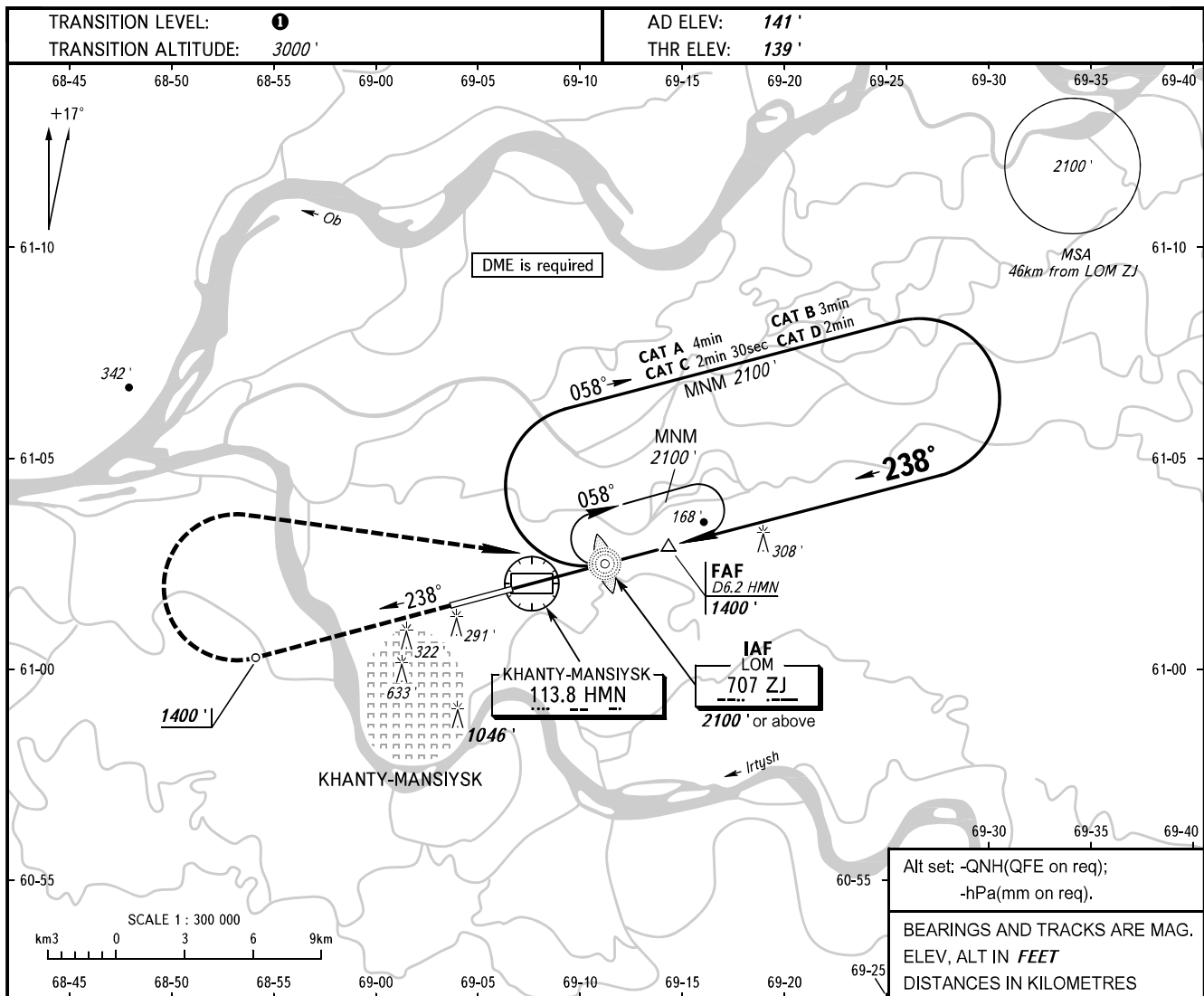


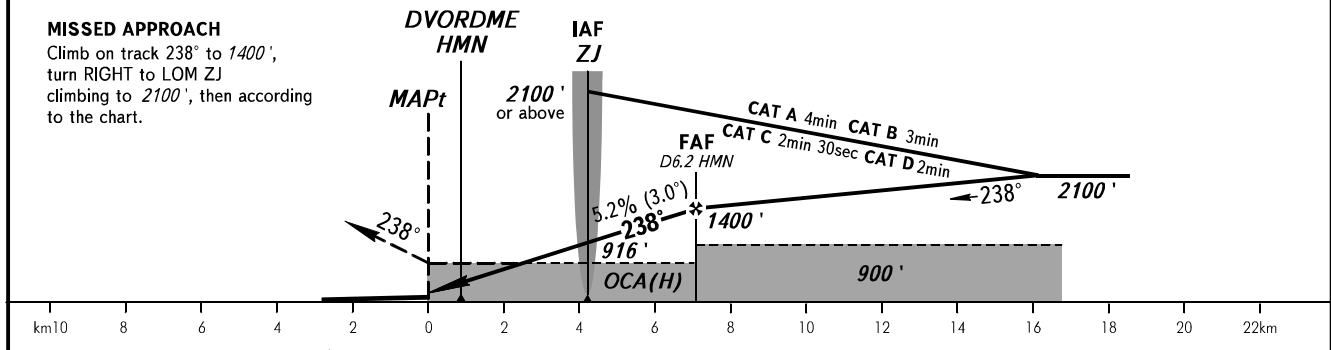
**INSTRUMENT
APPROACH
CHART - ICAO**

KHANTYM TOWER 118.100
KHANTYM RADAR 120.400

KHANTY-MANSIYSK, RUSSIA
KHANTY-MANSIYSK
NDB Z RWY 24



Alt set: -QNH(QFE on req);
-hPa(mm on req).
BEARINGS AND TRACKS ARE MAG.
ELEV, ALT IN FEET
DISTANCES IN KILOMETRES



OCA(H)		A	B	C	D
Straight-in	Approach	540' (400')	540' (400')	540' (400')	540' (400')
Circling		620' (480')	930' (790')	1440' (1300')	1440' (1300')
		Visual manoeuvring over housing areas to the north of the RWY and over the city is PROHIBITED.			

1 TRANSITION LEVEL:
- FL040 when QNH is 760mm mercury column or above;
- FL050 when QNH is 733mm mercury column or above, but less than 760mm mercury column;
- FL060 when QNH is less than 733mm mercury column.

GROUND SPEED	km/h	150	180	210	240	270	300	330	360	390
FAF-MAPt 7.2km	min:sec	2:50	2:22	2:02	1:47	1:35	1:26	1:17	1:11	1:06
RATE OF DESCENT	m/s	2.2	2.6	3.0	3.5	3.9	4.3	4.8	5.2	5.6