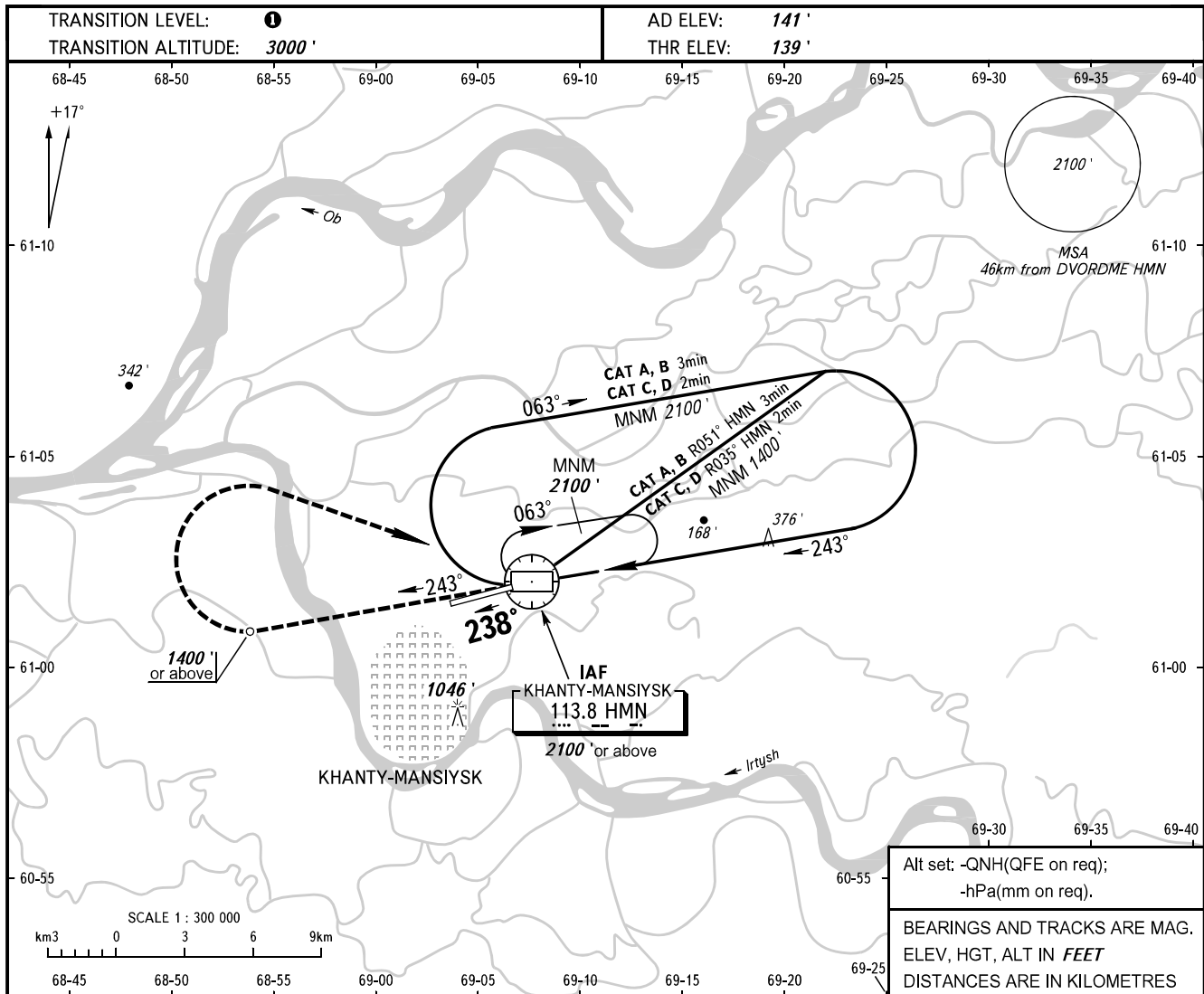


**INSTRUMENT
APPROACH
CHART - ICAO**

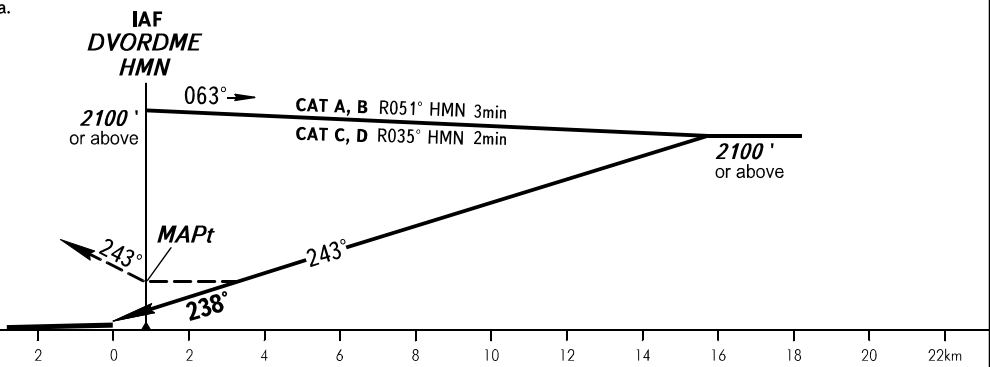
KHANTYM TOWER 118.100
KHANTYM RADAR 120.400

KHANTY-MANSIYSK, RUSSIA
KHANTY-MANSIYSK
VOR Y RWY 24



MISSED APPROACH

Climb on track 243° to 1400' or above, turn RIGHT to DVORDME HMN climbing to 2100' or above, then according to the chart or proceed to the holding area.



OCA(H)		A	B	C	D
Straight-in	Approach	680' (540')	680' (540')	680' (540')	680' (540')
	Approach				
Circling	Circling	680' (540')	930' (790')	1440' (1300')	1440' (1300')
		Visual manoeuvring over housing areas to the north of the RWY and over the city is PROHIBITED.			

- 1** TRANSITION LEVEL:
- FL040 when QNH is 760mm mercury column or above;
- FL050 when QNH is 733mm mercury column or above but less than 760mm mercury column;
- FL060 when QNH is less than 733mm mercury column.

WARNING

Final approach track is offset by 5° from the RWY centre line.