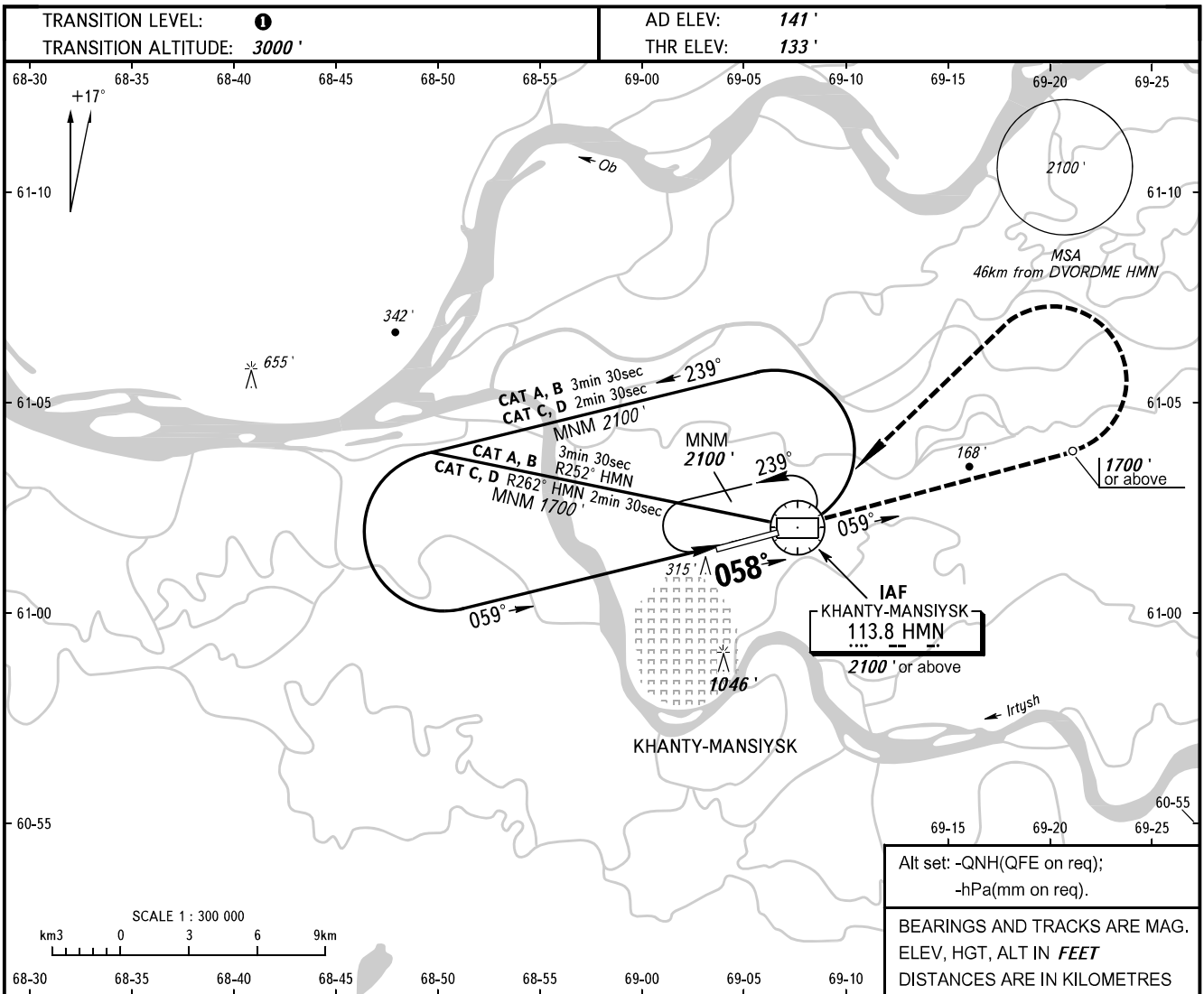


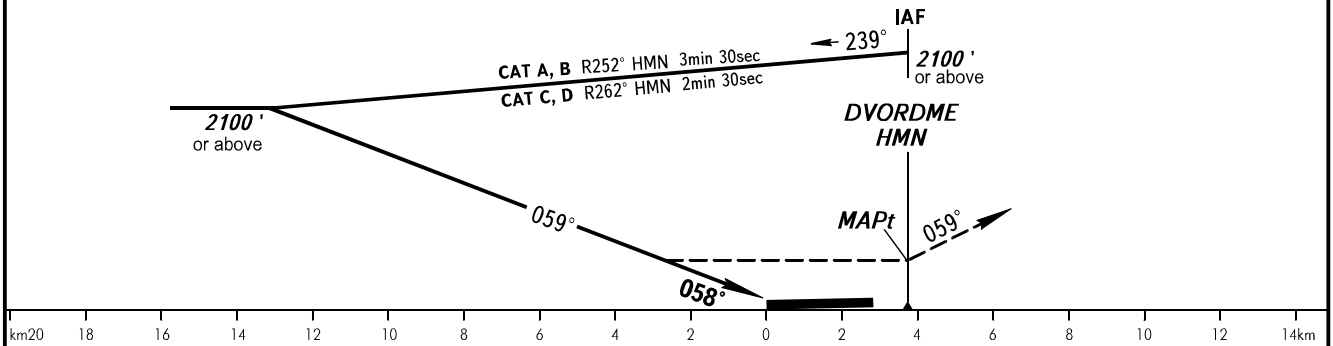
**INSTRUMENT
APPROACH
CHART - ICAO**

KHANTYM TOWER **118.100**
KHANTYM RADAR **120.400**

KHANTY-MANSIYSK, RUSSIA
KHANTY-MANSIYSK
VOR Y RWY 06



MISSED APPROACH
Climb on track 059° to 1700' or above, turn LEFT to DVORDME HMN climbing to 2100' or above, then according to the chart or proceed to the holding area.



OCA(H)		A	B	C	D
Straight-in Approach		610' (480')	610' (480')	610' (480')	610' (480')
Circling		620' (480')	930' (790')	1440' (1300')	1440' (1300')
		Visual manoeuvring over housing areas to the north of the RWY and over the city is PROHIBITED.			

① **TRANSITION LEVEL:**
- FL040 when QNH is 760mm mercury column or above;
- FL050 when QNH is 733mm mercury column or above but less than 760mm mercury column;
- FL060 when QNH is less than 733mm mercury column.

WARNING
Final approach track is offset by 1° from the RWY centre line.

CHANGE: New chart