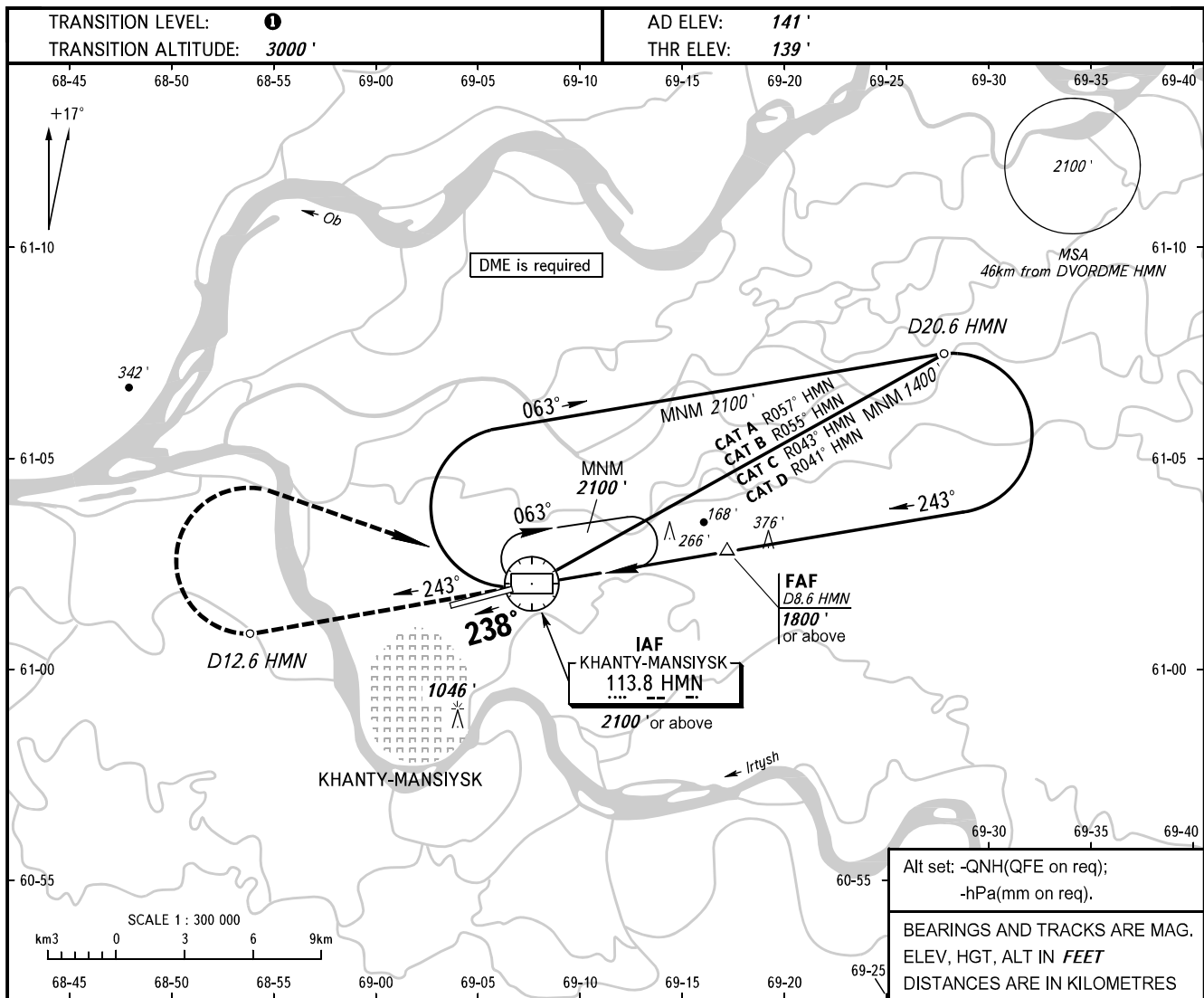


**INSTRUMENT
APPROACH
CHART - ICAO**

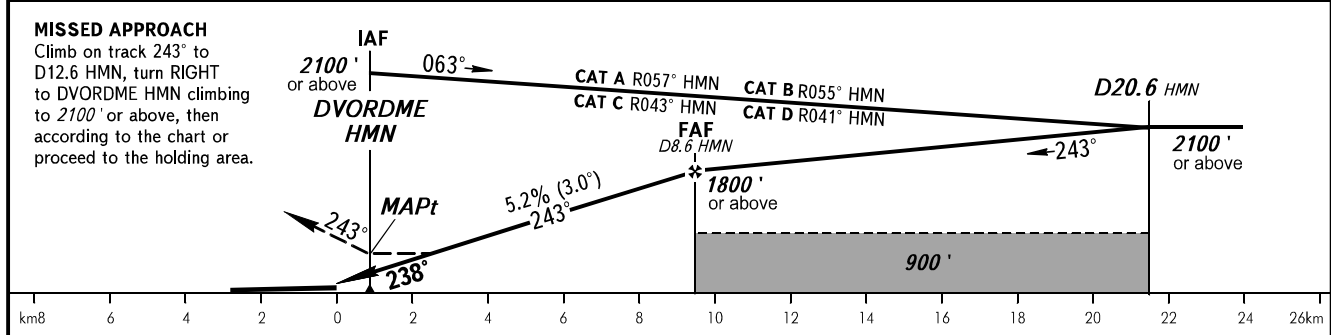
KHANTYM TOWER **118.100**
KHANTYM RADAR **120.400**

KHANTY-MANSIYSK, RUSSIA
KHANTY-MANSIYSK
VOR Z RWY 24



Alt set: -QNH(QFE on req);
-hPa(mm on req).
BEARINGS AND TRACKS ARE MAG.
ELEV, HGT, ALT IN FEET
DISTANCES ARE IN KILOMETRES

DME HMN	2.0	4.0	6.0	8.0
ALT 3.0° APCH	680'	1020'	1370'	1710'



OCA(H)	A	B	C	D						
Straight-in	520' (380')	520' (380')	520' (380')	520' (380')						
Approach										
Circling	620' (480')	930' (790')	1440' (1300')	1440' (1300')						
	Visual manoeuvring over housing areas to the north of the RWY and over the city is PROHIBITED.									
GROUND SPEED	km/h	150	180	210	240	270	300	330	360	390
RATE OF DESCENT	m/s	2.2	2.6	3.0	3.5	3.9	4.3	4.8	5.2	5.6

1 TRANSITION LEVEL:
- FL040 when QNH is 760mm mercury column or above;
- FL050 when QNH is 733mm mercury column or above but less than 760mm mercury column;
- FL060 when QNH is less than 733mm mercury column.
WARNING:
1. Final approach track is offset by 5° from the RWY centre line.
2. MAPt at DVORDME HMN. Timing not authorized for defining MAPt.