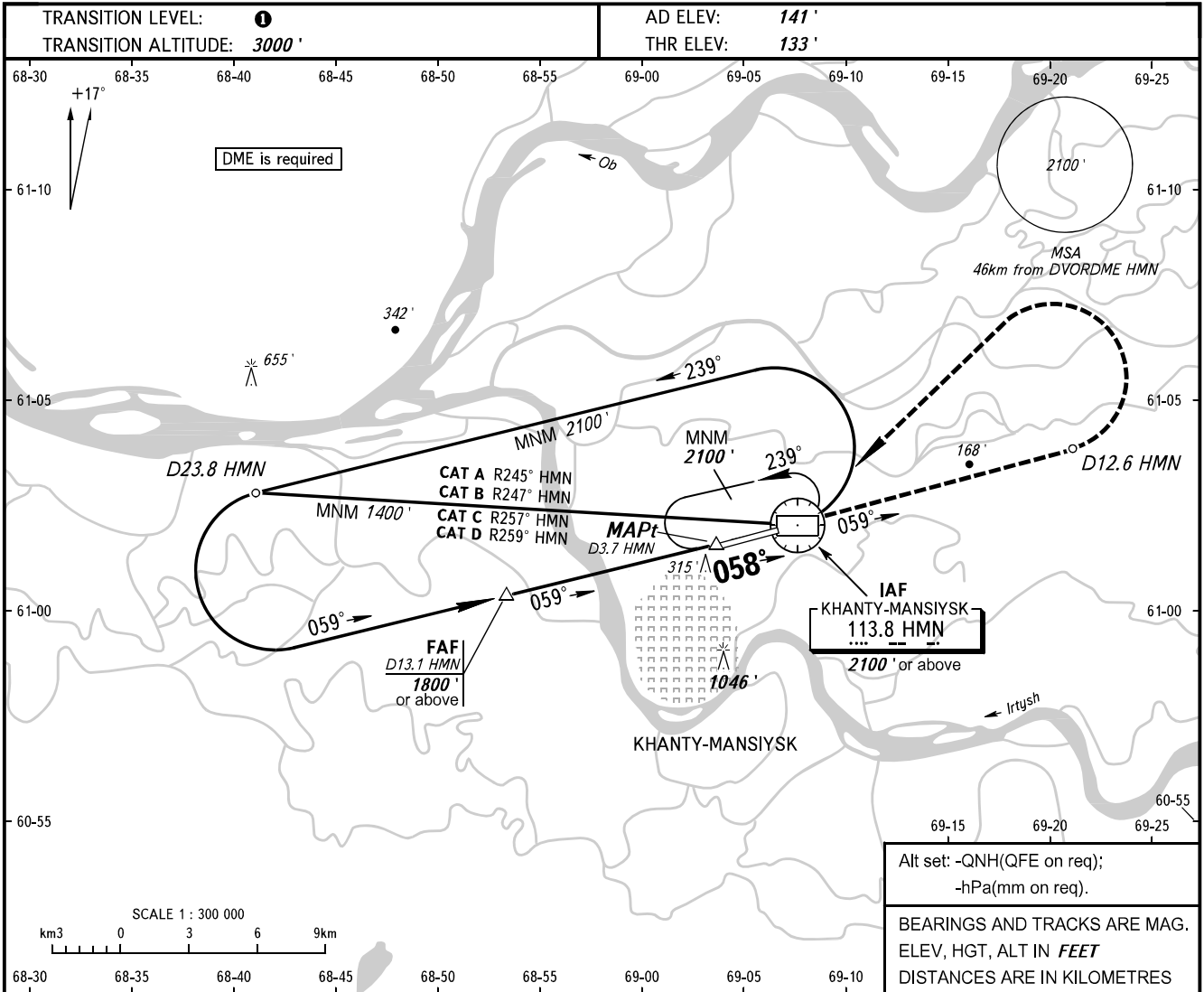


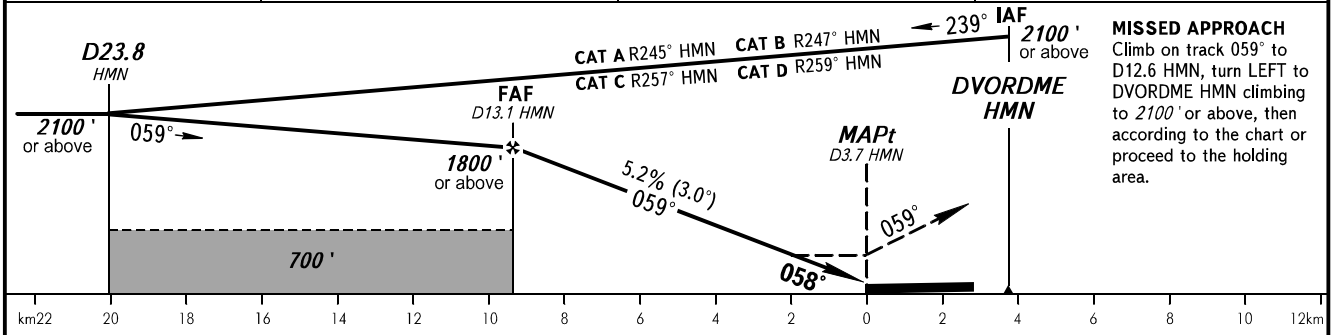
**INSTRUMENT
APPROACH
CHART - ICAO**

KHANTYM TOWER **118.100**
KHANTYM RADAR **120.400**

KHANTY-MANSIYSK, RUSSIA
KHANTY-MANSIYSK
VOR Z RWY 06



DME HMN	12.0	10.0	8.0
ALT 3.0° APCH	1610'	1270'	920'



OCA(H)		A	B	C	D							
Straight-in	Approach	570' (440')	570' (440')	570' (440')	570' (440')							
Circling		620' (480')	930' (790')	1440' (1300')	1440' (1300')							
		Visual manoeuvring over housing areas to the north of the RWY and over the city is PROHIBITED.										
GROUND SPEED	km/h	150	180	210	240	270	300	330	360	390		
RATE OF DESCENT	m/s		2.2	2.6	3.0	3.5	3.9	4.3	4.8	5.2	5.6	

1 TRANSITION LEVEL:
- FL040 when QNH is 760mm mercury column or above;
- FL050 when QNH is 733mm mercury column or above but less than 760mm mercury column;
- FL060 when QNH is less than 733mm mercury column.

WARNING:
1. Final approach track is offset by 1° from the RWY centre line.
2. MAPt at D3.7 HMN. Timing not authorized for defining MAPt.

CHANGE: New chart