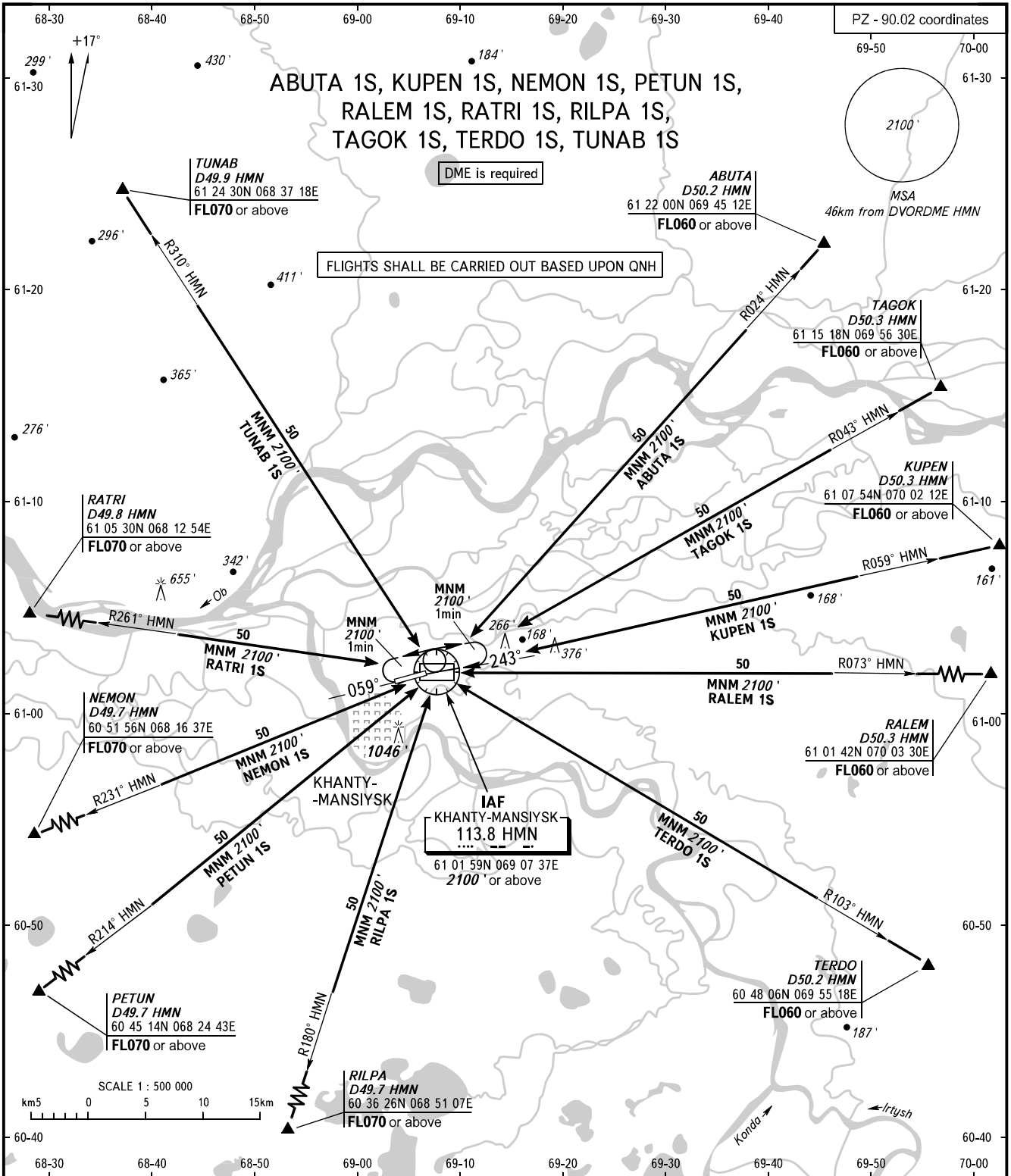


STANDARD ARRIVAL CHART  
INSTRUMENT (STAR) - ICAO

KHANTY-MANSIYSK, RUSSIA  
KHANTY-MANSIYSK  
RWY 06/24

TRANSITION  
LEVEL : **1**



KHANTYM TOWER **118.100**  
KHANTYM RADAR **120.400**

- 1** TRANSITION LEVEL:
- FL040 when QNH is 760mm mercury column or above;
  - FL050 when QNH is 733mm mercury column or above but less than 760mm mercury column;
  - FL060 when QNH is less than 733mm mercury column.

BEARINGS AND TRACKS ARE MAGNETIC  
ALTITUDES AND ELEVATIONS ARE IN FEET  
DISTANCES ARE IN KILOMETRES