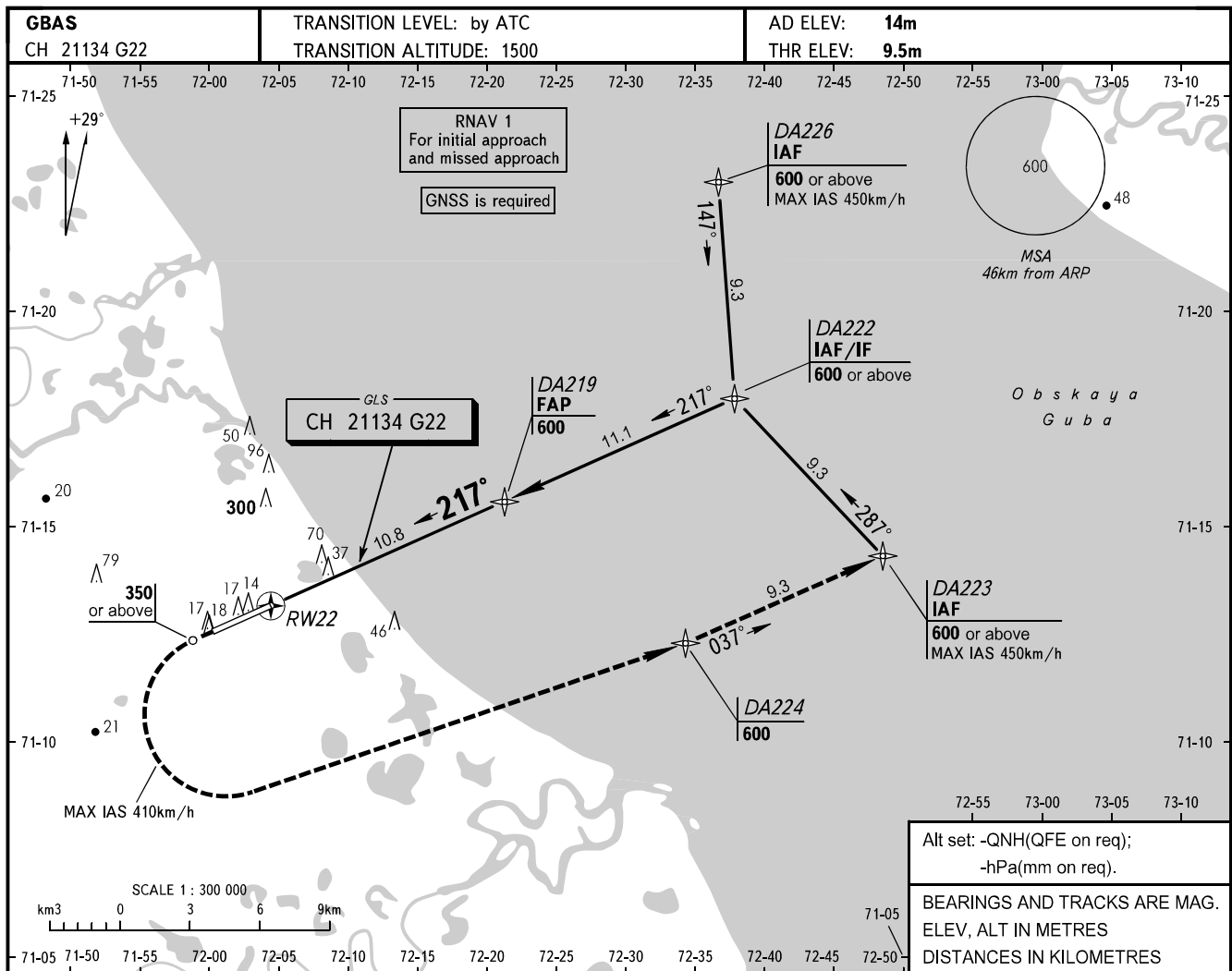


**INSTRUMENT
APPROACH
CHART - ICAO**

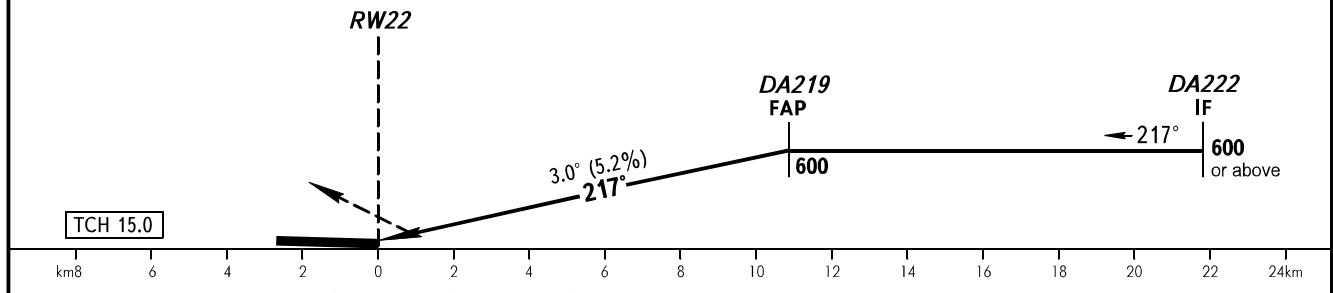
SABETTA INFORMATION **134.500**

SABETTA, RUSSIA
SABETTA
GLS RWY 22



Alt set: -QNH(QFE on req);
-hPa(mm on req).
BEARINGS AND TRACKS ARE MAG.
ELEV, ALT IN METRES
DISTANCES IN KILOMETRES

MISSED APPROACH
Climb straight ahead to 350 or above,
turn LEFT to DA224 climbing to 600,
proceed to DA223, then according to chart.



OCA		A	B	C	D					
Straight-in Approach		53	56	59	62					
Circling		135	165	195	225					
GROUND SPEED		km/h	150	180	210	240	270	300	330	360
RATE OF DESCENT		m/s	2.2	2.6	3.1	3.5	4.0	4.4	4.8	5.2

WARNING:
1. Visual manoeuvring to the north of AD is PROHIBITED.
2. GLS approach is AVBL only for ACFT having certified equipment and the flight crews having special approval.

CHANGE: MISSED APPROACH