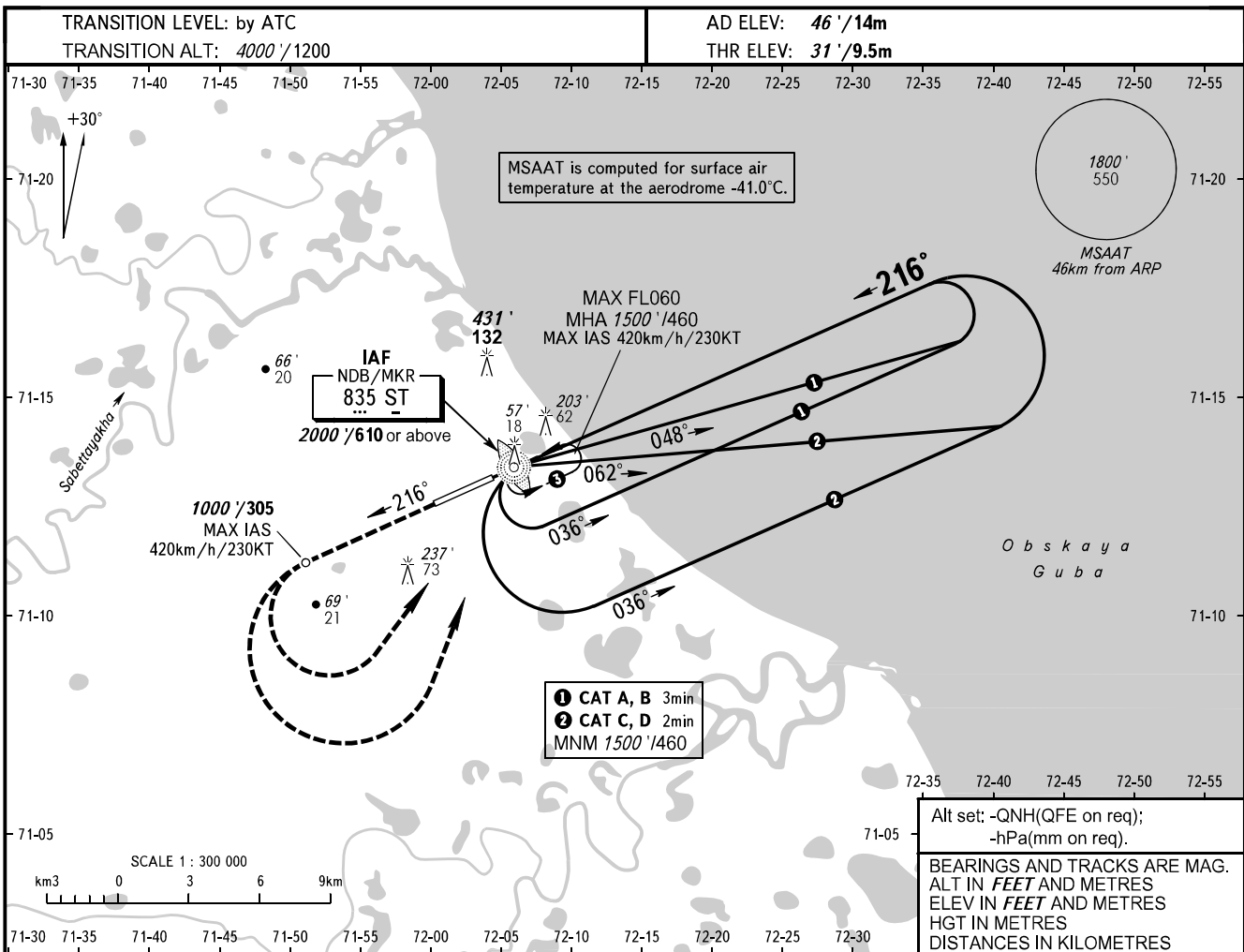


**INSTRUMENT
APPROACH
CHART - ICAO**

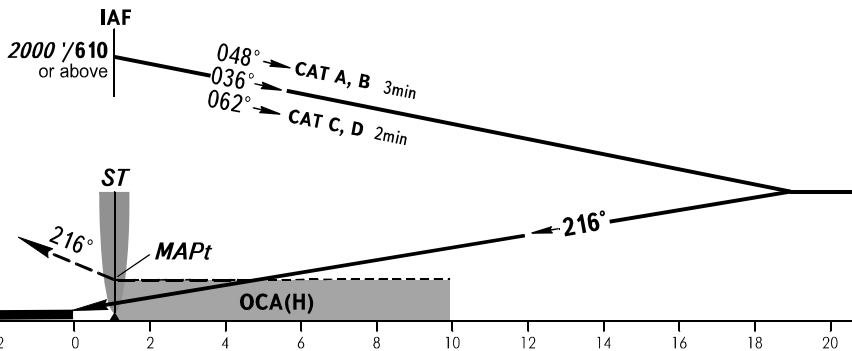
SABETTA INFORMATION **134.500**

SABETTA, RUSSIA
SABETTA
NDB Y RWY 22



MISSED APPROACH

Climb straight ahead to 1000'/305, turn LEFT to NDB/MKR ST climbing to 2000'/610 or above, then proceed to holding area or according to chart.



OCA(H)		A	B	C	D
Straight-in	Approach	500' (470')	500' (470')	500' (470')	500' (470')
	Approach	155 (145)	155 (145)	155 (145)	155 (145)
Circling	Approach	500' (460')	540' (490')	640' (590')	640' (590')
	Approach	155 (140)	165 (150)	195 (180)	195 (180)

WARNING
MAPt at NDB/MKR ST.