

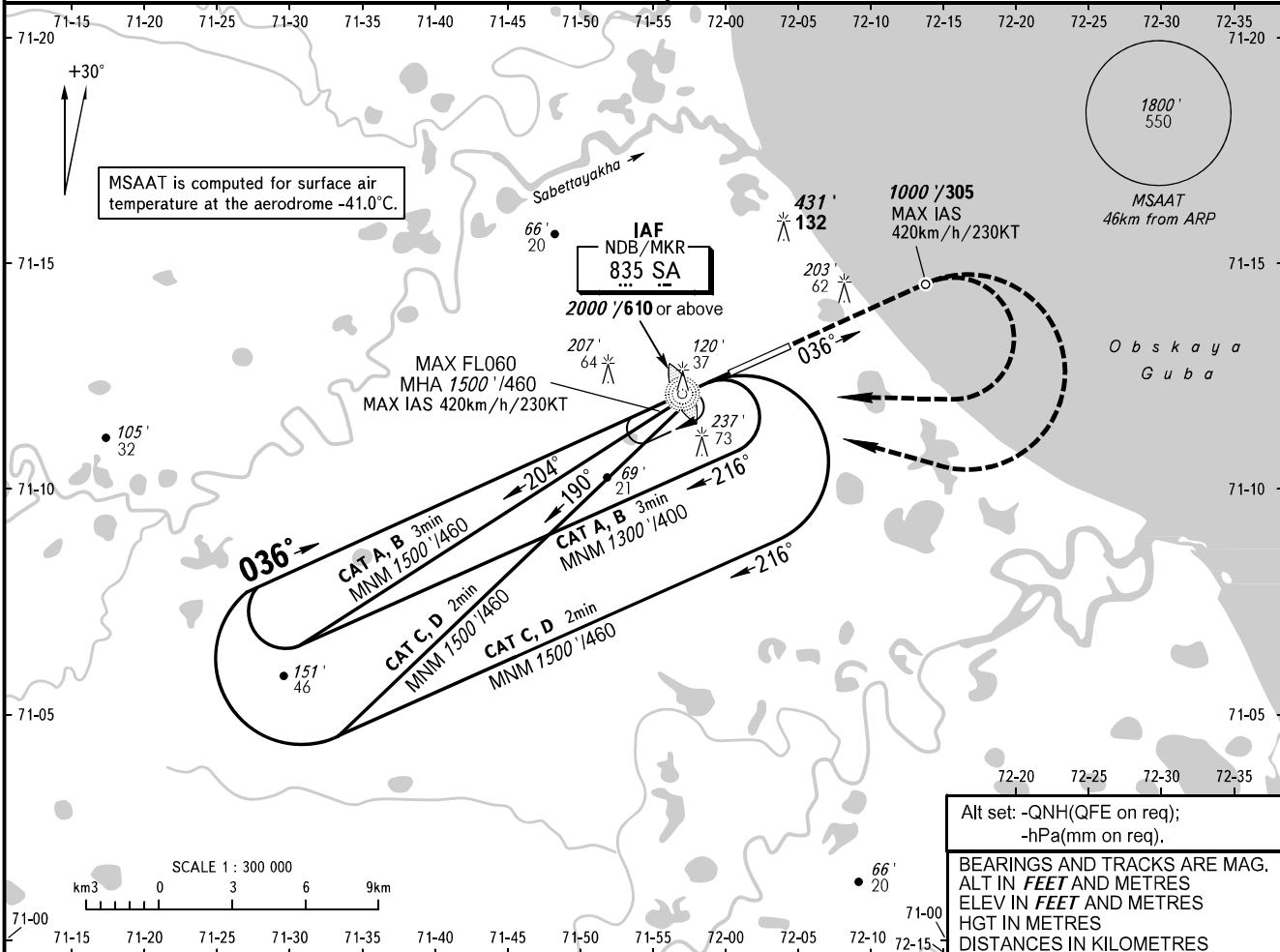
**INSTRUMENT
APPROACH
CHART - ICAO**

SABETTA INFORMATION **134.500**

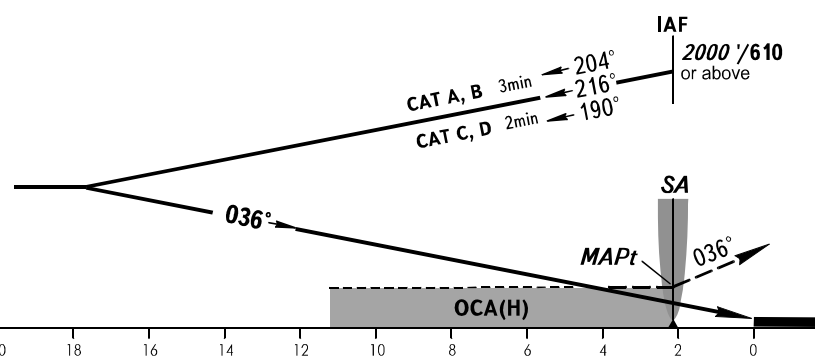
SABETTA, RUSSIA
SABETTA
NDB Y RWY 04

TRANSITION LEVEL: by ATC
TRANSITION ALT: 4000' / 1200

AD ELEV: 46' / 14m
THR ELEV: 45' / 14.0m



MISSED APPROACH
Climb straight ahead to 1000' / 305, turn RIGHT to NDB / MKR SA climbing to 2000' / 610 or above, then proceed to holding area or according to chart.



OCA(H)		A	B	C	D
Straight-in Approach		460' (410')	460' (410')	460' (410')	460' (410')
		140 (125)	140 (125)	140 (125)	140 (125)
Circling		500' (460')	540' (490')	640' (590')	640' (590')
		155 (140)	165 (150)	195 (180)	195 (180)

WARNING
MAPt at NDB / MKR SA.

CHANGE: New chart