

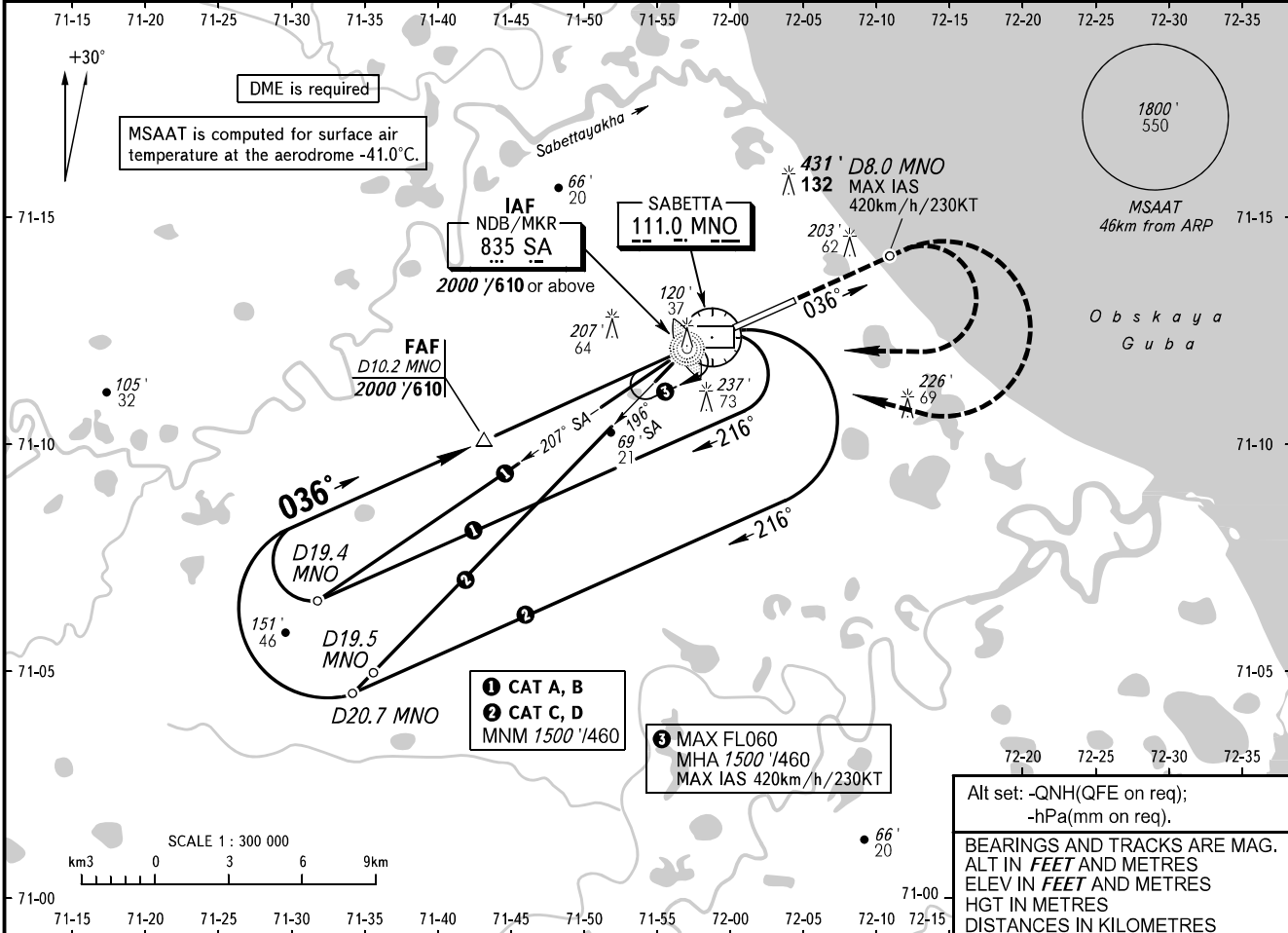
**INSTRUMENT
APPROACH
CHART - ICAO**

SABETTA INFORMATION **134.500**

SABETTA, RUSSIA
SABETTA
NDB Z RWY 04

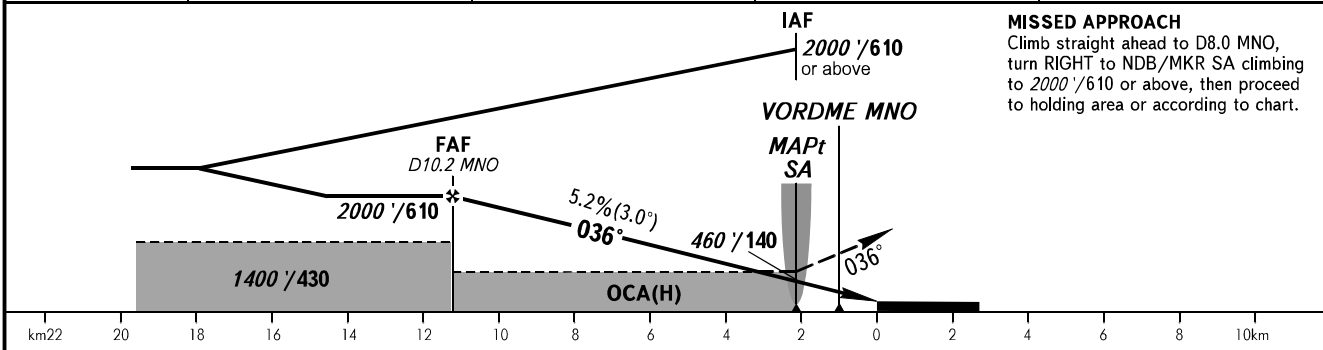
TRANSITION LEVEL: by ATC
TRANSITION ALT: 4000 / 1200

AD ELEV: 46' / 14m
THR ELEV: 45' / 14.0m



Alt set: -QNH(QFE on req);
-hPa(mm on req).
BEARINGS AND TRACKS ARE MAG.
ALT IN FEET AND METRES
ELEV IN FEET AND METRES
HGT IN METRES
DISTANCES IN KILOMETRES

DIST to THR RWY 04	10.0	8.0	6.0	4.0
DME MNO	9.0	7.0	5.0	3.0
ALTITUDE/HEIGHT	1810' / (535)	1460' / (435)	1120' / (330)	780' / (225)



MISSED APPROACH
Climb straight ahead to D8.0 MNO,
turn RIGHT to NDB/MKR SA climbing
to 2000' / 610 or above, then proceed
to holding area or according to chart.

OCA(H)		A	B	C	D	WARNING MAPt at NDB/MKR SA. Timing not authorized for defining MAPt									
Straight-in	Approach	460' (410') 140 (125)	460' (410') 140 (125)	460' (410') 140 (125)	460' (410') 140 (125)										
Circling		500' (460') 155 (140)	540' (490') 165 (150)	640' (590') 195 (180)	640' (590') 195 (180)										
GROUND SPEED		km/h	150	180	210	240	270	300	330	360	390	420	450		
		kt	81	97	113	130	146	162	178	194	211	227	243		
RATE OF DESCENT		m/s	2.2	2.6	3.0	3.5	3.9	4.3	4.8	5.2	5.6	6.1	6.5		
		ft/min	427	512	597	682	768	853	938	1024	1109	1194	1365		

CHANGE: New chart