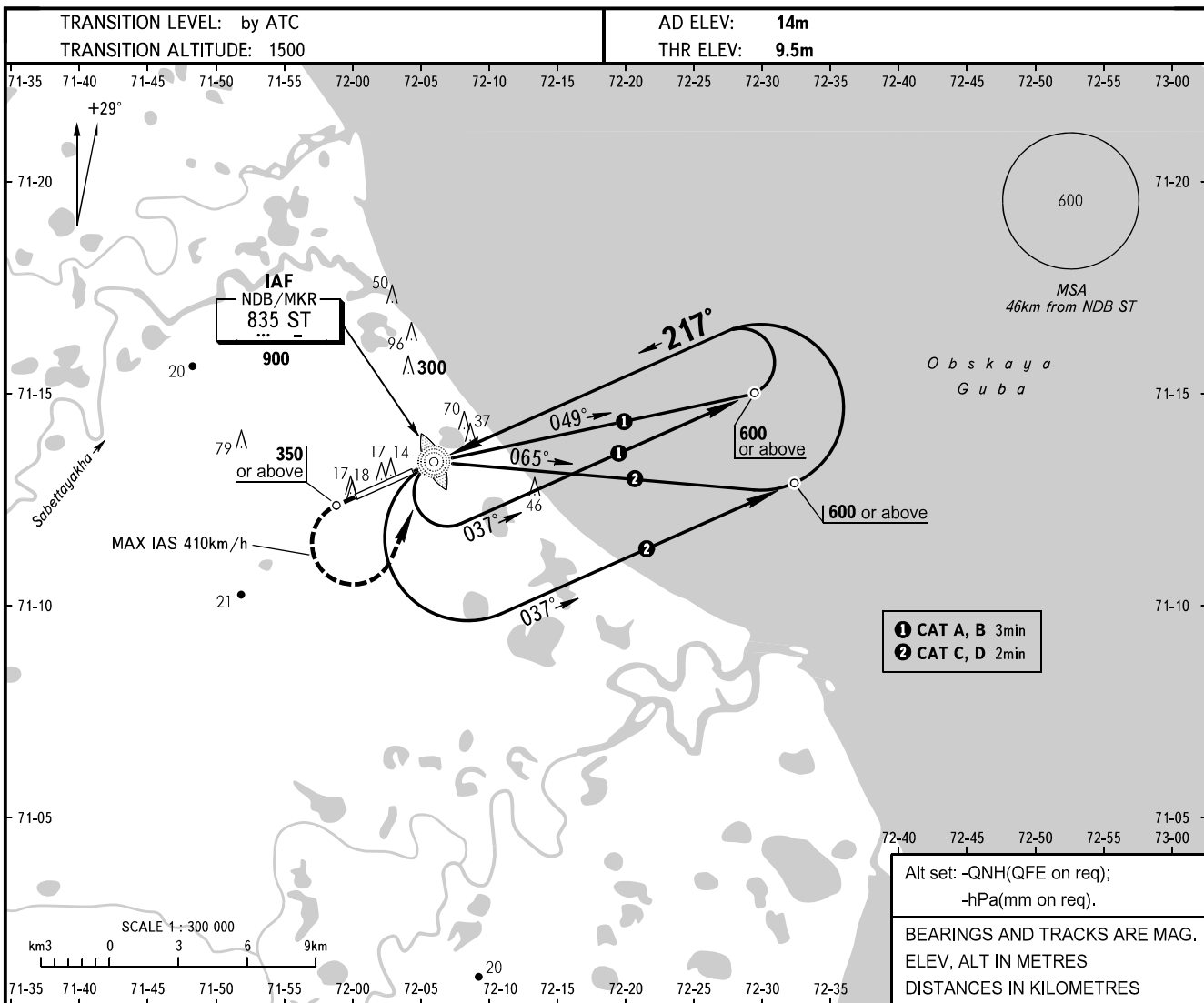


**INSTRUMENT
APPROACH
CHART - ICAO**

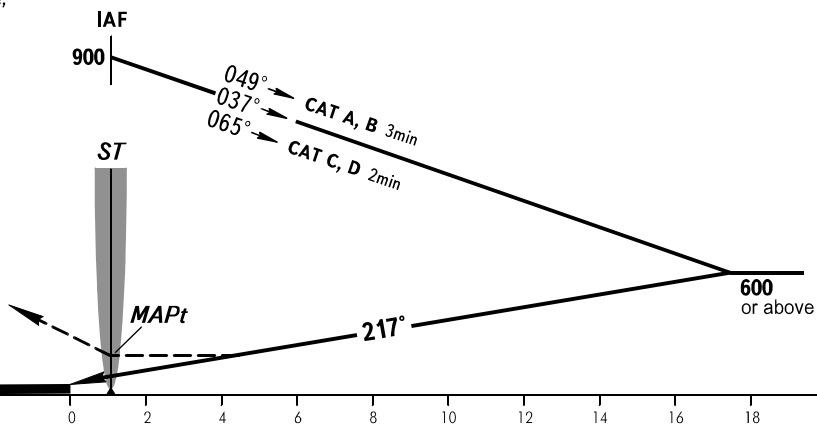
SABETTA INFORMATION **134.500**

SABETTA, RUSSIA
SABETTA
NDB RWY 22



MISSED APPROACH

Climb straight ahead to 350 or above,
turn LEFT to NDB/MKR ST climbing
to 600, then according to chart.



OCA

A

B

C

D

Straight-in
Approach

Circling

160

160

160

160

135

165

195

225

WARNING

Visual manoeuvring to the north of AD is PROHIBITED.