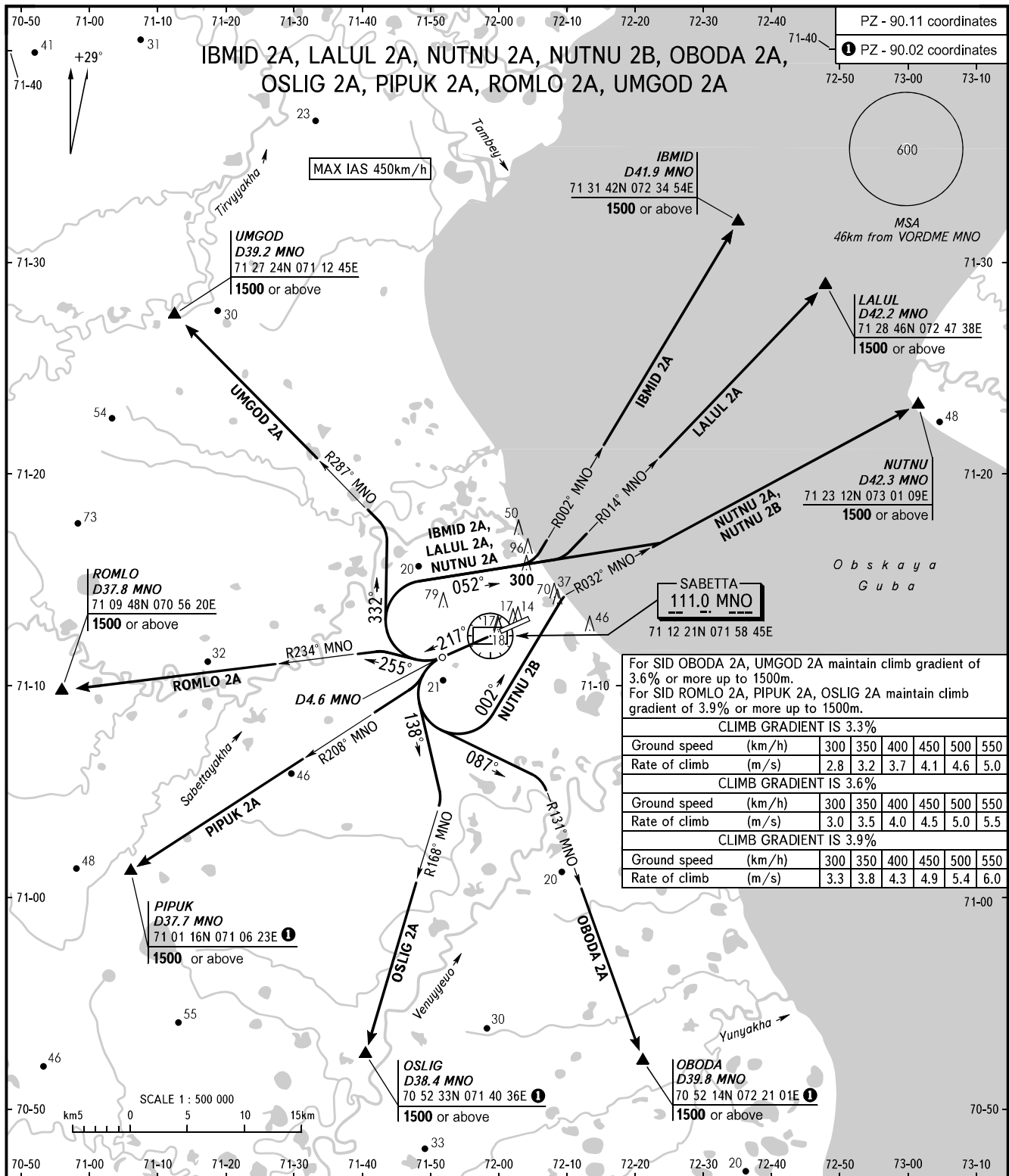


STANDARD DEPARTURE CHART
INSTRUMENT (SID)

TRANSITION
ALTITUDE: 1500

SABETTA, RUSSIA
SABETTA
RWY 22



For SID OBODA 2A, UMGOD 2A maintain climb gradient of 3.6% or more up to 1500m.
For SID ROMLO 2A, PIPUK 2A, OSLIG 2A maintain climb gradient of 3.9% or more up to 1500m.

CLIMB GRADIENT IS 3.3%						
Ground speed (km/h)	300	350	400	450	500	550
Rate of climb (m/s)	2.8	3.2	3.7	4.1	4.6	5.0
CLIMB GRADIENT IS 3.6%						
Ground speed (km/h)	300	350	400	450	500	550
Rate of climb (m/s)	3.0	3.5	4.0	4.5	5.0	5.5
CLIMB GRADIENT IS 3.9%						
Ground speed (km/h)	300	350	400	450	500	550
Rate of climb (m/s)	3.3	3.8	4.3	4.9	5.4	6.0

SABETTA INFORMATION 134.500

BEARINGS AND TRACKS ARE MAGNETIC
ALTITUDES AND ELEVATIONS IN METRES
DISTANCES IN KILOMETRES