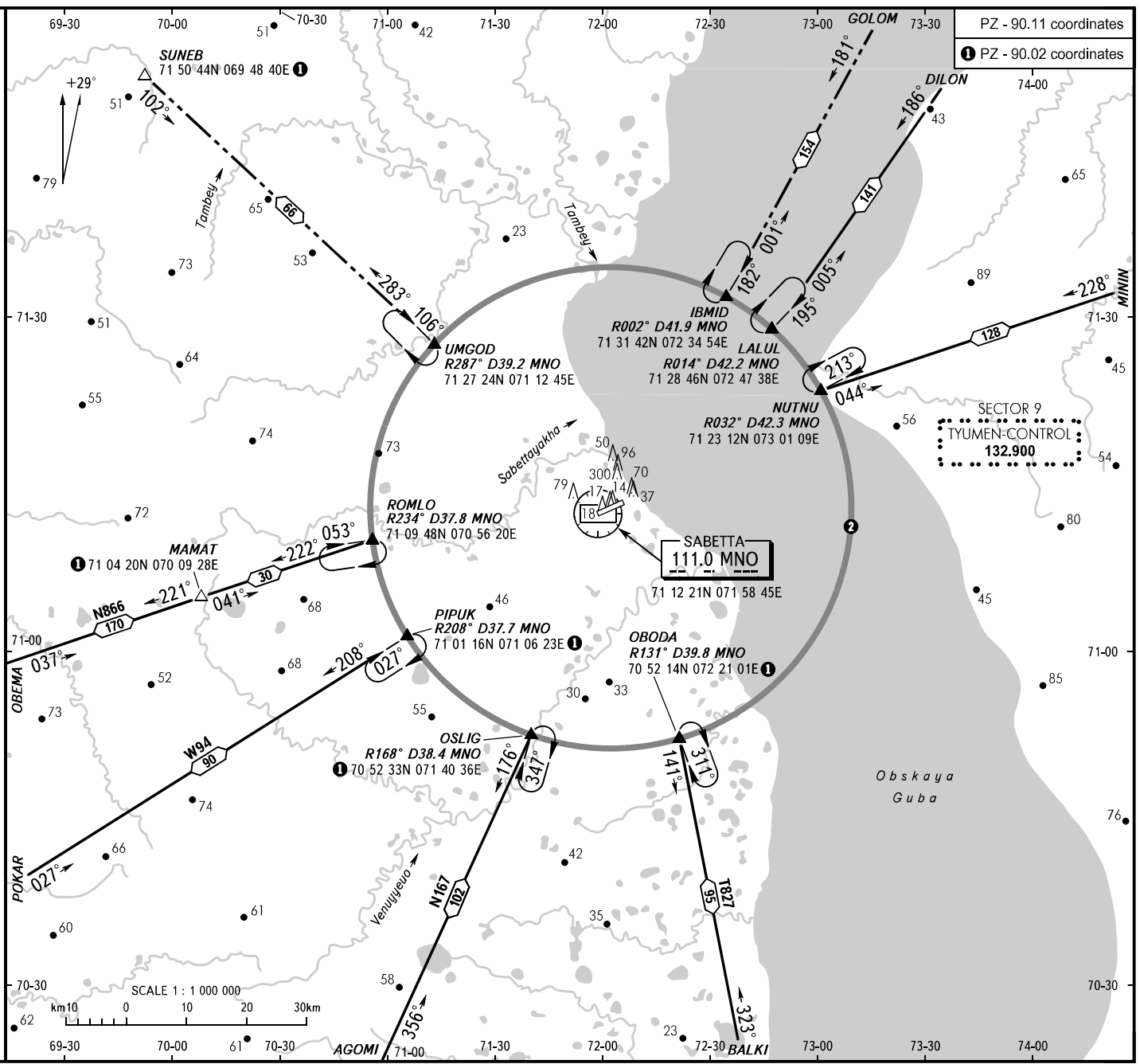


AREA CHART - ICAO

ARRIVAL, DEPARTURE AND TRANSIT ROUTES

SABETTA, RUSSIA

SABETTA



SABETTA INFORMATION 134.500

② SABETTA FIC airspace

WARNING:

1. Only flight information and alerting services are provided within SABETTA FIC airspace. Flights within SABETTA FIC airspace shall be carried out based upon GNH.
2. During IFR flights in SABETTA FIC airspace the following is PROHIBITED:
 - a) presence of more than one ACFT carrying out IFR flight;
 - b) flights of HELI (light ACFT). In the area with radius of 10km centred at SABETTA AD ARP.
3. It is mandatory for flight crews of all ACFT to establish communication with FIC controller 5 minutes before:
 - entry into SABETTA FIC airspace;
 - scheduled engines start-up to obtain ATC clearance for flight.

BEARINGS AND TRACKS ARE MAGNETIC
ALTITUDES AND ELEVATIONS IN METRES
DISTANCES IN KILOMETRES

Federal Air Transport Agency

AIRAC AMDT 13/20