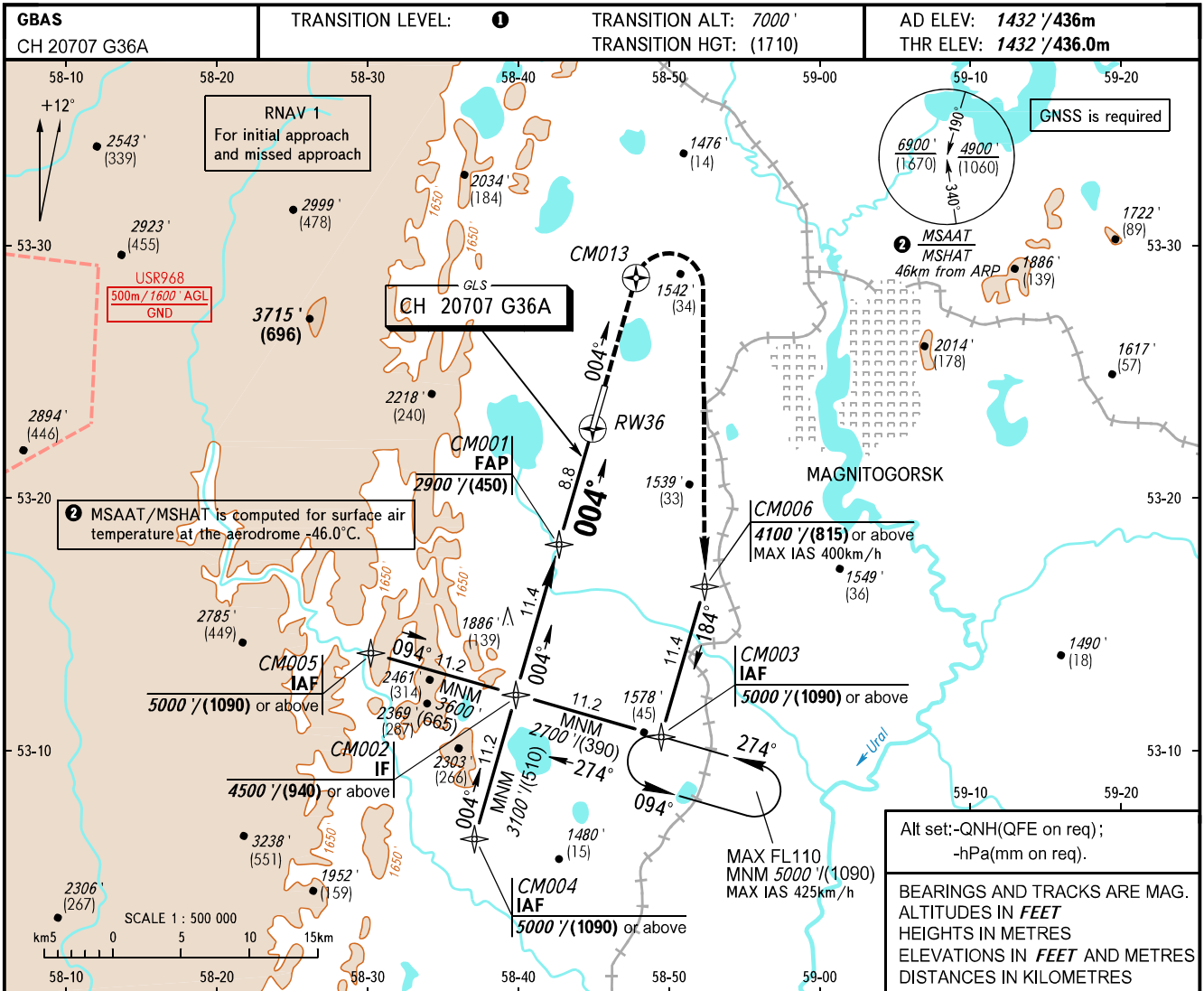


**INSTRUMENT
APPROACH
CHART - ICAO**

**MAGNITOGORSK, RUSSIA
MAGNITOGORSK
GLS RWY 36**

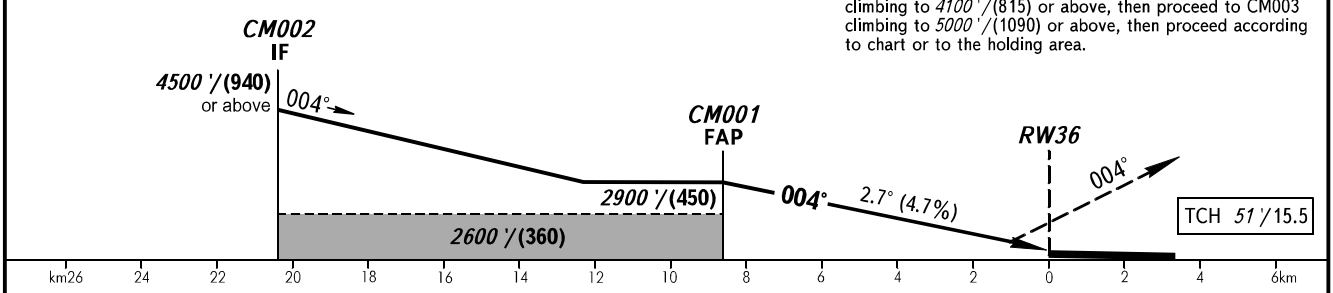
TOWER **120.800**



Alt set: -QNH(QFE on req);
-hPa(mm on req).

BEARINGS AND TRACKS ARE MAG.
ALTITUDES IN FEET
HEIGHTS IN METRES
ELEVATIONS IN FEET AND METRES
DISTANCES IN KILOMETRES

MISSED APPROACH
Straight ahead to CM013, turn RIGHT to CM006
climbing to 4100'/(815) or above, then proceed to CM003
climbing to 5000'/(1090) or above, then proceed according
to chart or to the holding area.



OCA(H)	A	B	C	D						
Straight-in Approach	1618' (186') (57)	1628' (196') (60)	1637' (206') (63)	1647' (216') (66)						
Circling	1830' (400') (125)	1930' (500') (155)	2090' (660') (205)	2270' (840') (260)						
GROUND SPEED	km/h	150	180	210	240	270	300	330	360	390
RATE OF DESCENT	m/s	2.0	2.4	2.7	3.1	3.5	3.9	4.3	4.7	5.1
	ft/min	386	462	540	617	694	771	848	925	1002

1 TRANSITION LEVEL:
- FL080 when QNH is 1013 hPa (760mm mercury column)
or above;
- FL090 when QNH is 977 hPa (733mm mercury column)
or above, but less than 1013 hPa (760mm mercury column);
- FL100 when QNH is less than 977 hPa (733mm mercury
column).

CHANGE: New chart