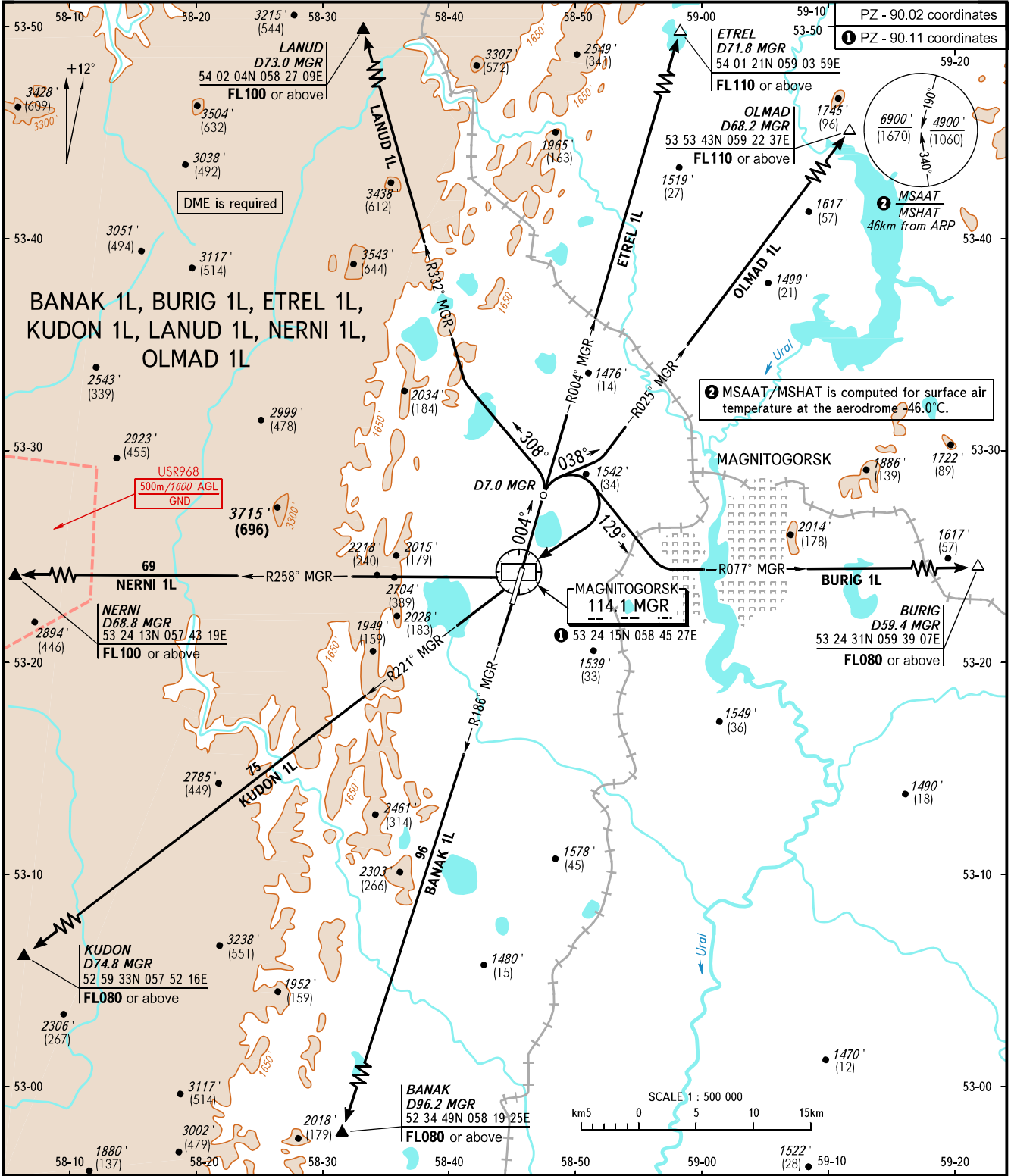


STANDARD DEPARTURE CHART
INSTRUMENT (SID) - ICAO

MAGNITOGORSK, RUSSIA
MAGNITOGORSK
RWY 36

TRANSITION ALT: 7000'
TRANSITION HGT: (1710)



TOWER	120.800	The minimum climb gradients required due to the airspace structure: - 3.5% up to FL100 for LANUD 1L; - 4.1% up to FL110 for ETREL 1L; - 4.3% up to FL110 for OLMAD 1L.
BEARINGS AND TRACKS ARE MAGNETIC ALTITUDES IN FEET ELEVATIONS IN FEET AND METRES HEIGHTS IN METRES DISTANCES IN KILOMETRES		
Alt set: -QNH(QFE on req); -hPa(mm on req).		

CHANGE: New chart