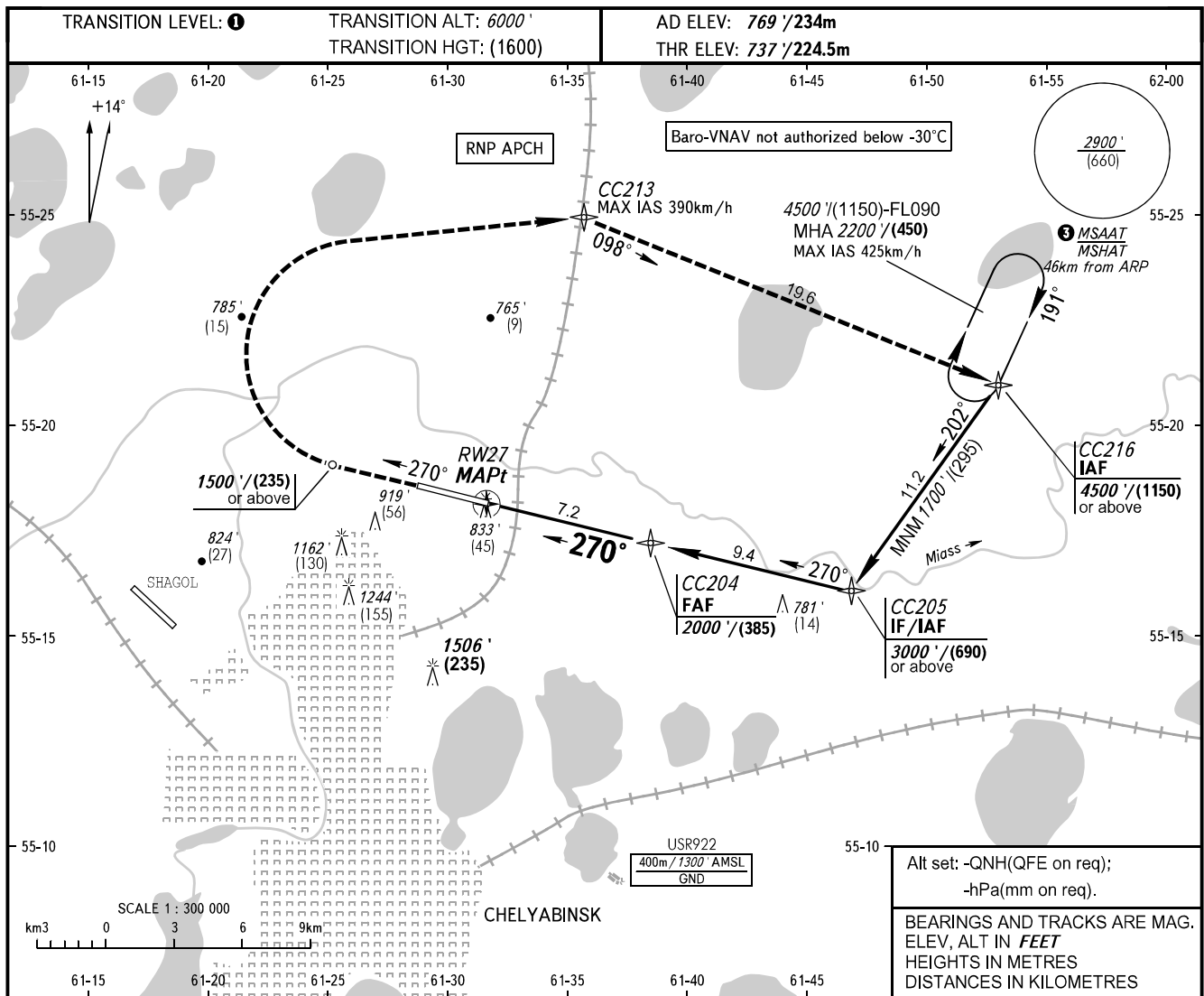


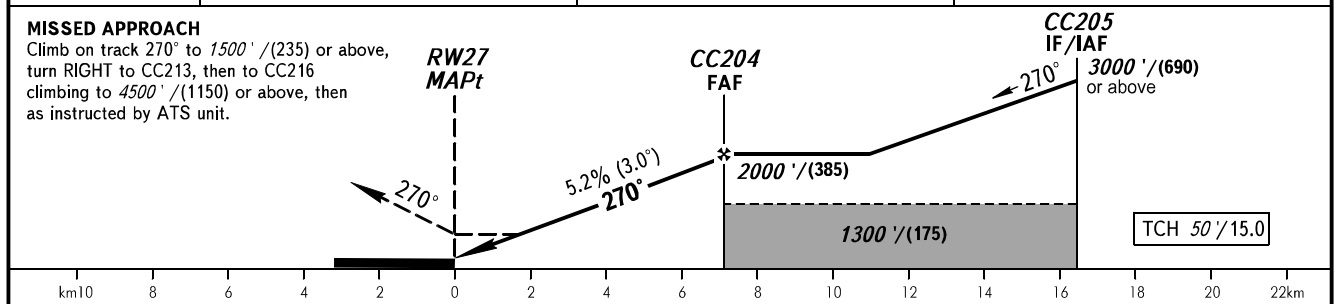
**INSTRUMENT
APPROACH
CHART - ICAO**

START	125.200
RADAR	133.200

CHELYABINSK, RUSSIA
BALANDINO
RNP RWY 27



DIST TO RW27	2.0	4.0	6.0
ALTITUDE/HEIGHT	1130'/(120)	1470'/(225)	1820'/(335)



OCA(H)		A	B	C	D								
Straight-in	LNAV	1130' (390') (120)	1130' (390') (120)	1130' (390') (120)	1130' (390') (120)								
	LNAV/VNAV	1013' (276') (85)	1026' (289') (90)	1034' (297') (95)	1044' (307') (95)								
Circling		1220' (450') (140)	1460' (690') (210)	1640' (870') (265)	1900' (1140') (345)								
GROUND SPEED		km/h	150	180	210	240	270	300	330	360	390	420	450
RATE OF DESCENT		m/s	2.2	2.6	3.0	3.5	3.9	4.3	4.8	5.2	5.6	6.1	6.5
		ft/min	433	512	591	689	768	846	945	1024	1102	1201	1280

- ① TRANSITION LEVEL:
 - FL070 when QNH is 1013 hPa (760mm mercury column) or above;
 - FL080 when QNH is 977 hPa (733mm mercury column) or above, but less than 1013 hPa (760mm mercury column);
 - FL090 when QNH is less than 977 hPa (733mm mercury column).
- ② MSAAT/MSHAT is computed for surface air temperature at the aerodrome -35.5°C.