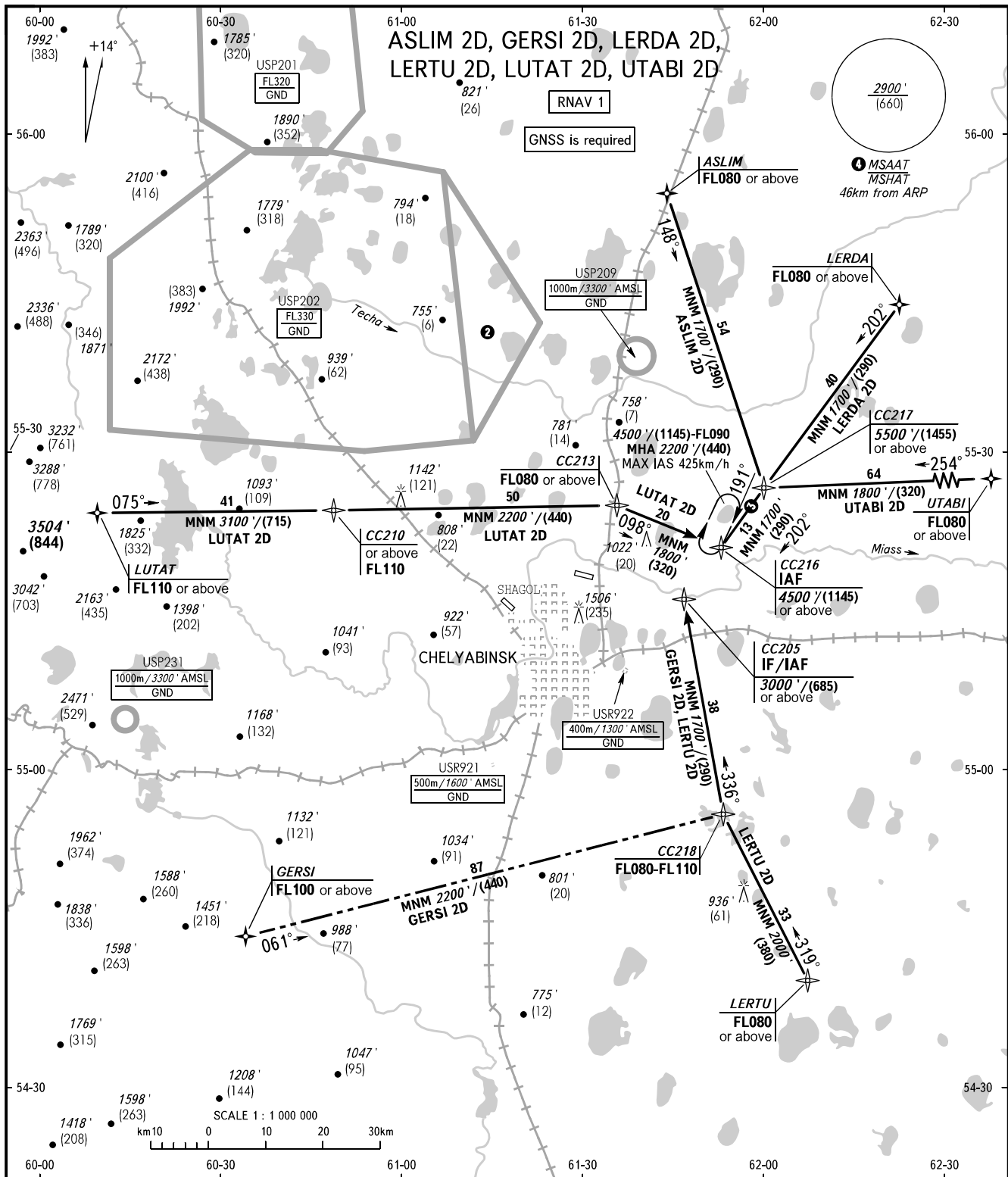


STANDARD ARRIVAL CHART
INSTRUMENT (STAR) - ICAO

CHELYABINSK, RUSSIA
BALANDINO
RNAV RWY 27

TRANSITION
LEVEL: ①



APPROACH 124.700
RADAR 133.200
START 125.200

- ① TRANSITION LEVEL:
- FL070 when QNH is 1013 hPa (760mm mercury column) or above;
 - FL080 when QNH is 977 hPa (733mm mercury column) or above, but less than 1013 hPa (760mm mercury column);
 - FL090 when QNH is less than 977 hPa (733mm mercury column).

② Flights through prohibited area
USP202 are allowed at FL050-FL330.

③ ASLIM 2D, LERDA 2D, UTABI 2D

④ MSAAT/MSHAT is computed for surface air temperature at the aerodrome -35.5°C.

BEARINGS AND TRACKS ARE MAGNETIC
ALTITUDES AND ELEVATIONS IN FEET
HEIGHTS IN METRES
DISTANCES IN KILOMETRES

Alt set: -QNH(QFE on req);
-hPa(mm on req).