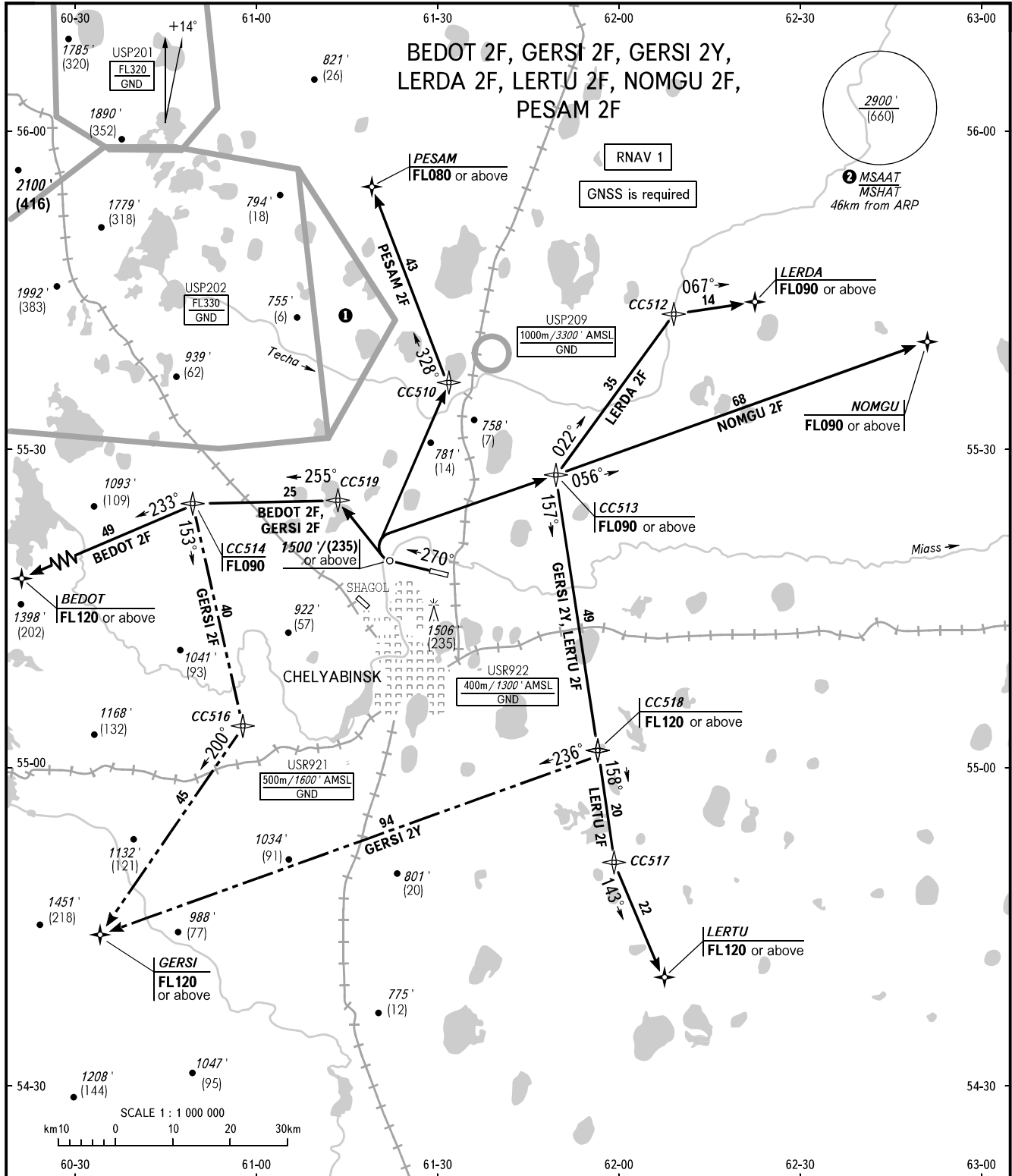


STANDARD DEPARTURE CHART
INSTRUMENT (SID) - ICAO

TRANSITION ALT: **6000'**
TRANSITION HGT: **(1600)**

CHELYABINSK, RUSSIA
BALANDINO
RNAV RWY 27



START **125.200**
RADAR **133.200**
APPROACH **124.700**

NOTE
The minimum climb gradients are as follows
(required due to the airspace structure):
- 5.1% up to FL090 for SID GERSI 2Y, LERTU 2F,
NOMGU 2F, LERDA 2F;
- 6.8% up to FL110 for SID GERSI 2F, BEDOT 2F.

- ① Flights through prohibited area USP202 are allowed at FL050-FL330.
- ② MSAAT/MSHAT is computed for surface air temperature at the aerodrome -35.5°C.

BEARINGS AND TRACKS ARE MAGNETIC
ALTITUDES AND ELEVATIONS IN **FEET**
HEIGHTS IN METRES
DISTANCES IN KILOMETRES

Alt set: -QNH(QFE on req);
-hPa(mm on req).