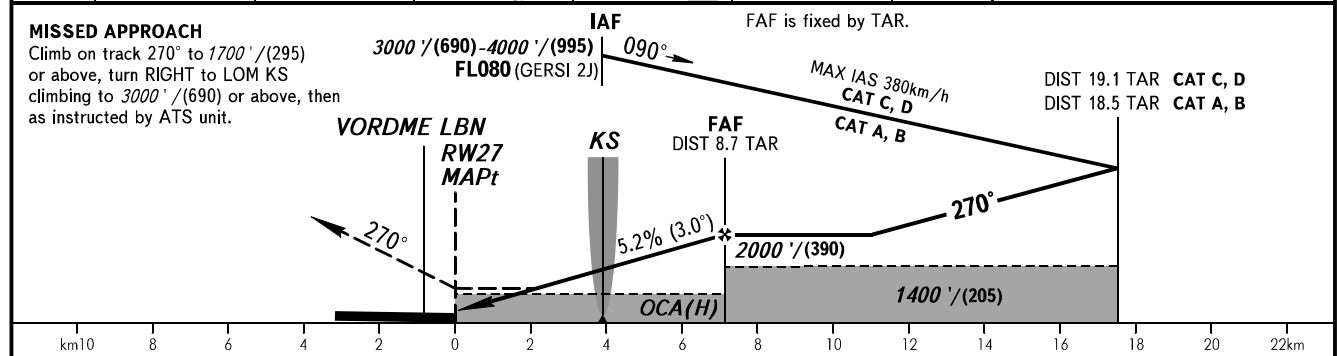
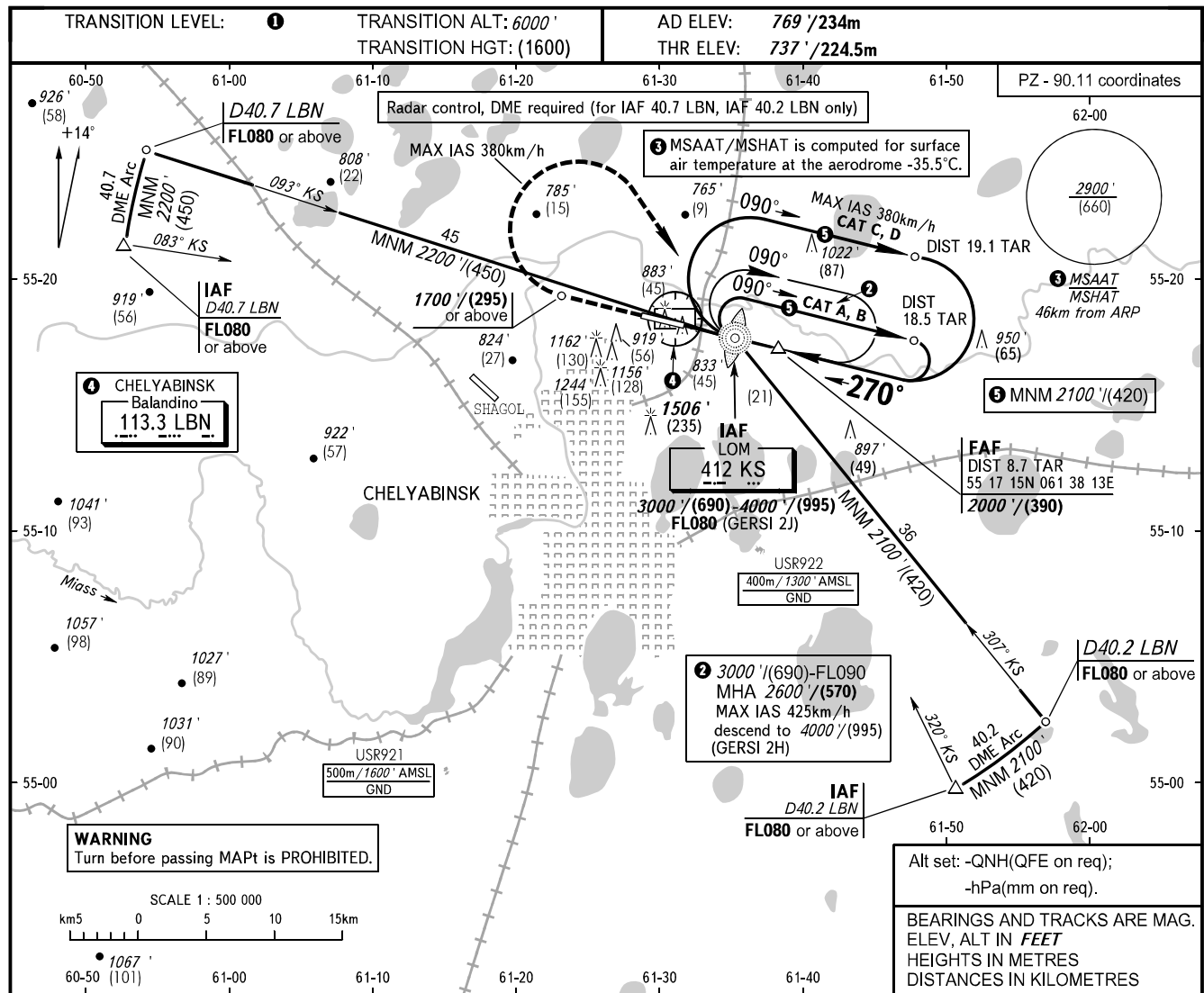


**INSTRUMENT  
APPROACH  
CHART - ICAO**

RADAR **133.200**  
START **125.200**

**CHELYABINSK, RUSSIA**  
BALANDINO  
NDB RWY 27



OCA(H)		A	B	C	D	① TRANSITION LEVEL:								
Straight-in Approach		1080' (340') (105)	1080' (340') (105)	1080' (340') (105)	1080' (340') (105)	- FL070 when QNH is 1013 hPa (760mm mercury column) or above; - FL080 when QNH is 977 hPa (733mm mercury column) or above, but less than 1013 hPa (760mm mercury column); - FL090 when QNH is less than 977 hPa (733mm mercury column).								
	Circling	1220' (450') (140)	1460' (690') (210)	1640' (870') (265)	1900' (1140') (345)									
GROUND SPEED	km/h	150	180	210	240	270	300	330	360	390	420	450		
FAF-MAPt 7000m	min:sec	2:48	2:20	2:00	1:45	1:33	1:24	1:16	1:10	1:04	1:00	0:56		
RATE OF DESCENT	m/s	2.2	2.6	3.0	3.5	3.9	4.3	4.8	5.2	5.6	6.1	6.5		
RATE OF DESCENT	ft/min	433	512	591	689	768	846	945	1024	1102	1201	1280		