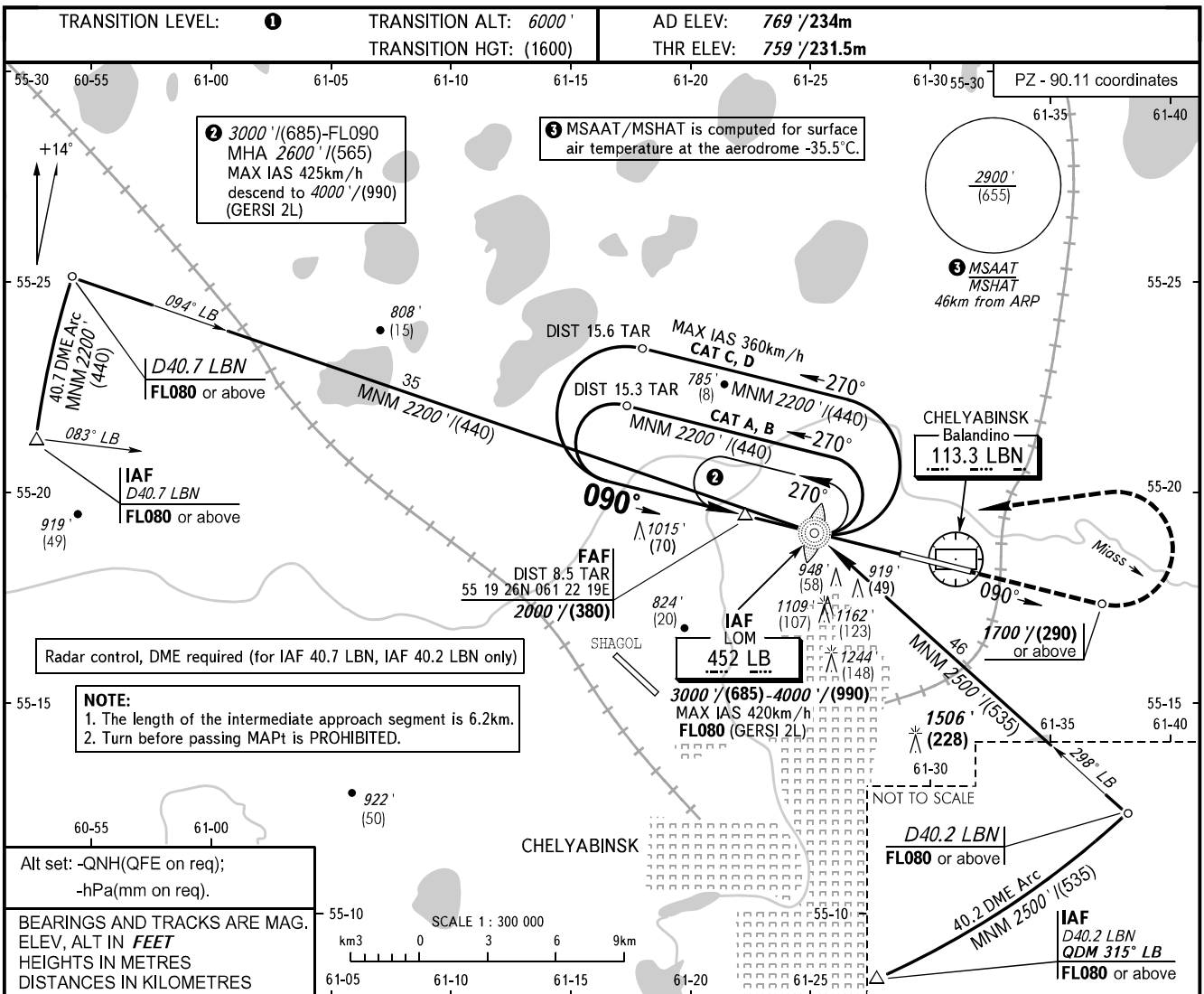


**INSTRUMENT
APPROACH
CHART - ICAO**

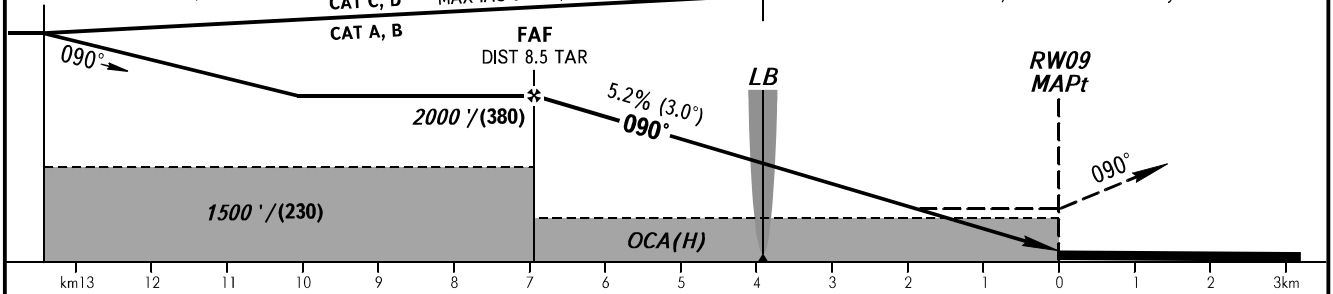
RADAR **133.200**
START **125.200**

CHELYABINSK, RUSSIA
BALANDINO
NDB RWY 09



FAF is fixed by TAR.

MISSED APPROACH
Climb on track 090° to 1700'/(290) or above, turn LEFT to LOM LB climbing to 3000'/(685) or above, then as instructed by ATS unit.



OCA(H)	A	B	C	D
Straight-in Approach	1200' (440') (135)	1200' (440') (135)	1200' (440') (135)	1200' (440') (135)
Circling	1220' (450') (140)	1460' (690') (210)	1640' (870') (265)	1900' (1140') (345)

1 TRANSITION LEVEL:
- FL070 when QNH is 1013 hPa (760mm mercury column) or above;
- FL080 when QNH is 977 hPa (733mm mercury column) or above, but less than 1013 hPa (760mm mercury column);
- FL090 when QNH is less than 977 hPa (733mm mercury column).

GROUND SPEED	km/h	150	180	210	240	270	300	330	360	390	420	450
RATE OF DESCENT	m/s	2.2	2.6	3.0	3.5	3.9	4.3	4.8	5.2	5.6	6.1	6.5
RATE OF DESCENT	ft/min	433	512	591	689	768	846	945	1024	1102	1201	1280

CHANGE: New chart