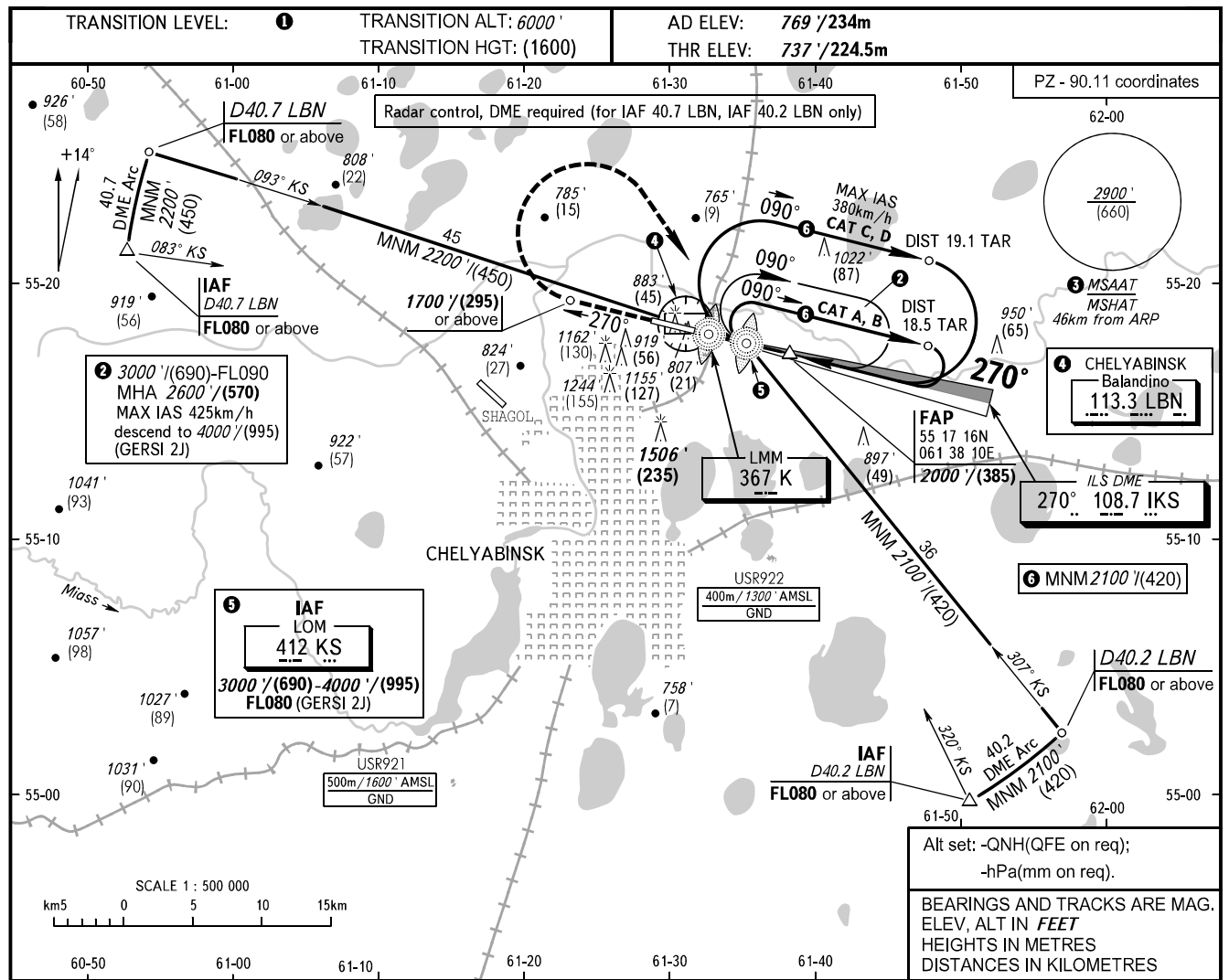


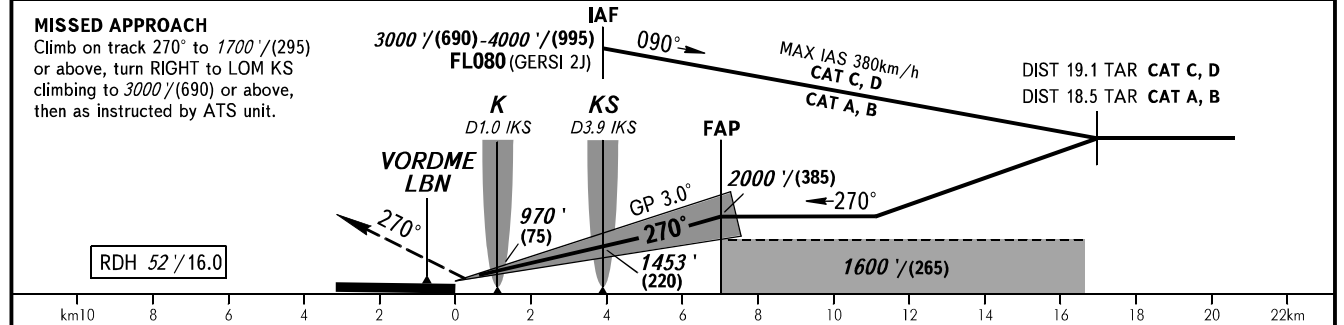
**INSTRUMENT
APPROACH
CHART - ICAO**

RADAR **133.200**
START **125.200**

CHELYABINSK, RUSSIA
BALANDINO
ILS X CAT I/II/IIIA RWY 27



DME IKS	2.0	4.0	6.0
ALTITUDE/HEIGHT	1130'/(120)	1470'/(225)	1820'/(335)



OCA(H)		A	B	C	D							
Straight-in Approach	CAT I	937' (200') (61)	937' (200') (61)	937' (200') (61)	937' (200') (61)							
	CAT II	(100') (31)	(100') (31)	(100') (31)	(100') (31)							
	CAT IIIA	APPROVED										
Circling		1220' (450') (140)	1460' (690') (210)	1640' (870') (265)	1900' (1140') (345)							
GROUND SPEED	km/h	150	180	210	240	270	300	330	360	390	420	450
RATE OF DESCENT	m/s	2.2	2.6	3.0	3.5	3.9	4.3	4.8	5.2	5.6	6.1	6.5
RATE OF DESCENT	ft/min	433	512	591	689	768	846	945	1024	1102	1201	1280

1 TRANSITION LEVEL:
- FL070 when QNH is 1013 hPa (760mm mercury column) or above;
- FL080 when QNH is 977 hPa (733mm mercury column) or above, but less than 1013 hPa (760mm mercury column);
- FL090 when QNH is less than 977 hPa (733mm mercury column).

3 MSAAT/MSHAT is computed for surface air temperature at the aerodrome -35.5°C.