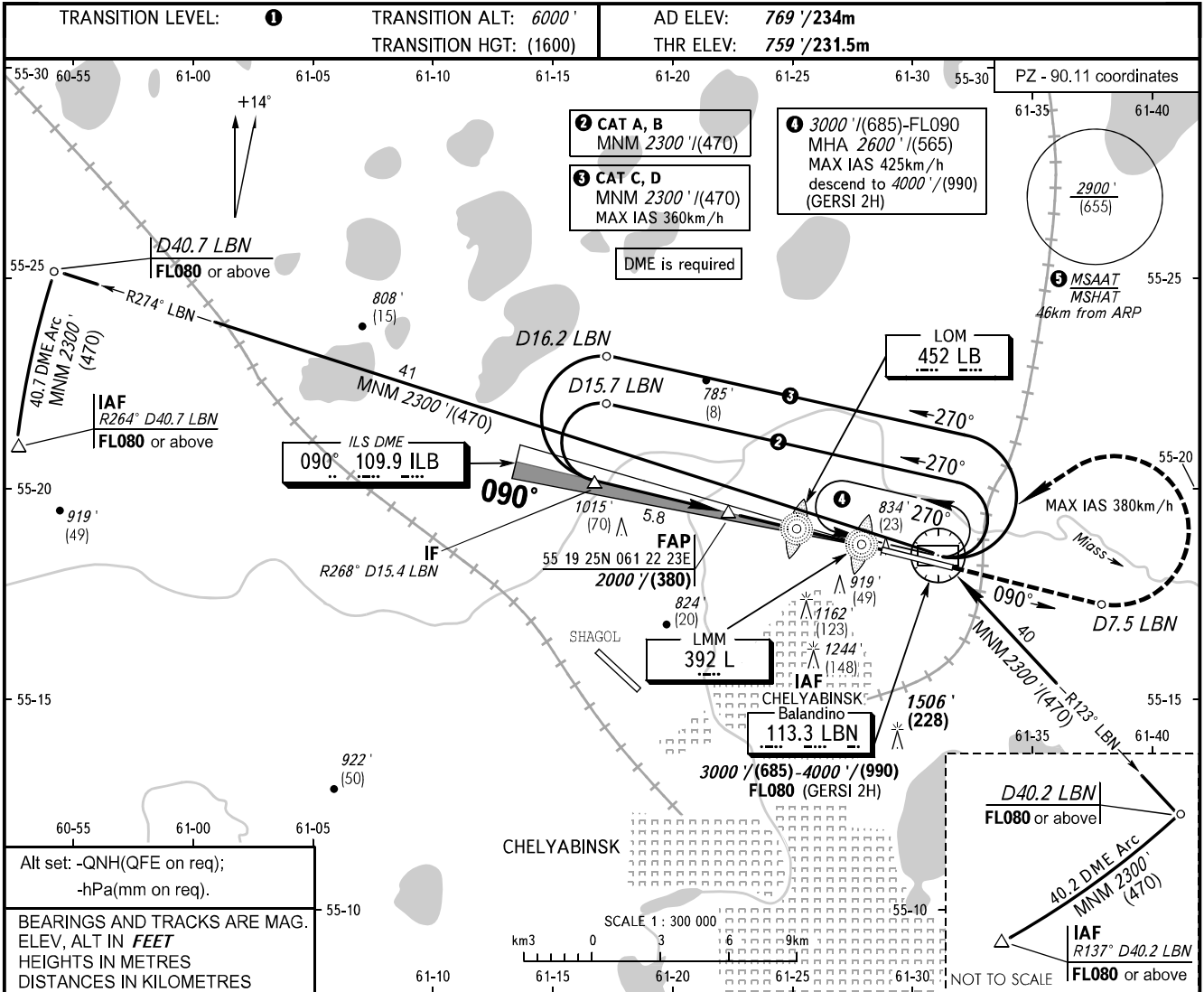


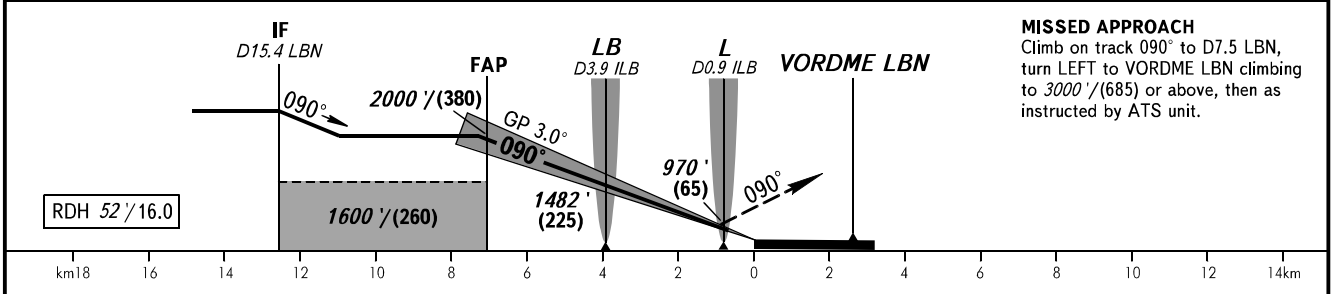
**INSTRUMENT  
APPROACH  
CHART - ICAO**

**CHELYABINSK, RUSSIA  
BALANDINO  
ILS Y CAT I RWY 09**

RADAR **133.200**  
START **125.200**



DME ILB	6.0	4.0	2.0
ALTITUDE/HEIGHT	1840'/(330)	1500'/(230)	1160'/(125)



OCA(H)		A	B	C	D							
Straight-in Approach	CAT I	959' (200') (61)	959' (200') (61)	959' (200') (61)	959' (200') (61)							
Circling		1220' (450') (140)	1460' (690') (210)	1640' (870') (265)	1900' (1140') (345)							
GROUND SPEED	km/h	150	180	210	240	270	300	330	360	390	420	450
RATE OF DESCENT	m/s	2.2	2.6	3.0	3.5	3.9	4.3	4.8	5.2	5.6	6.1	6.5
RATE OF DESCENT	ft/min	433	512	591	689	768	846	945	1024	1102	1201	1280

**1** TRANSITION LEVEL:  
- FL070 when QNH is 1013 hPa (760mm mercury column) or above;  
- FL080 when QNH is 977 hPa (733mm mercury column) or above, but less than 1013 hPa (760mm mercury column);  
- FL090 when QNH is less than 977 hPa (733mm mercury column).

**5** MSAAT/MSHAT is computed for surface air temperature at the aerodrome -35.5°C.

CHANGE: New chart