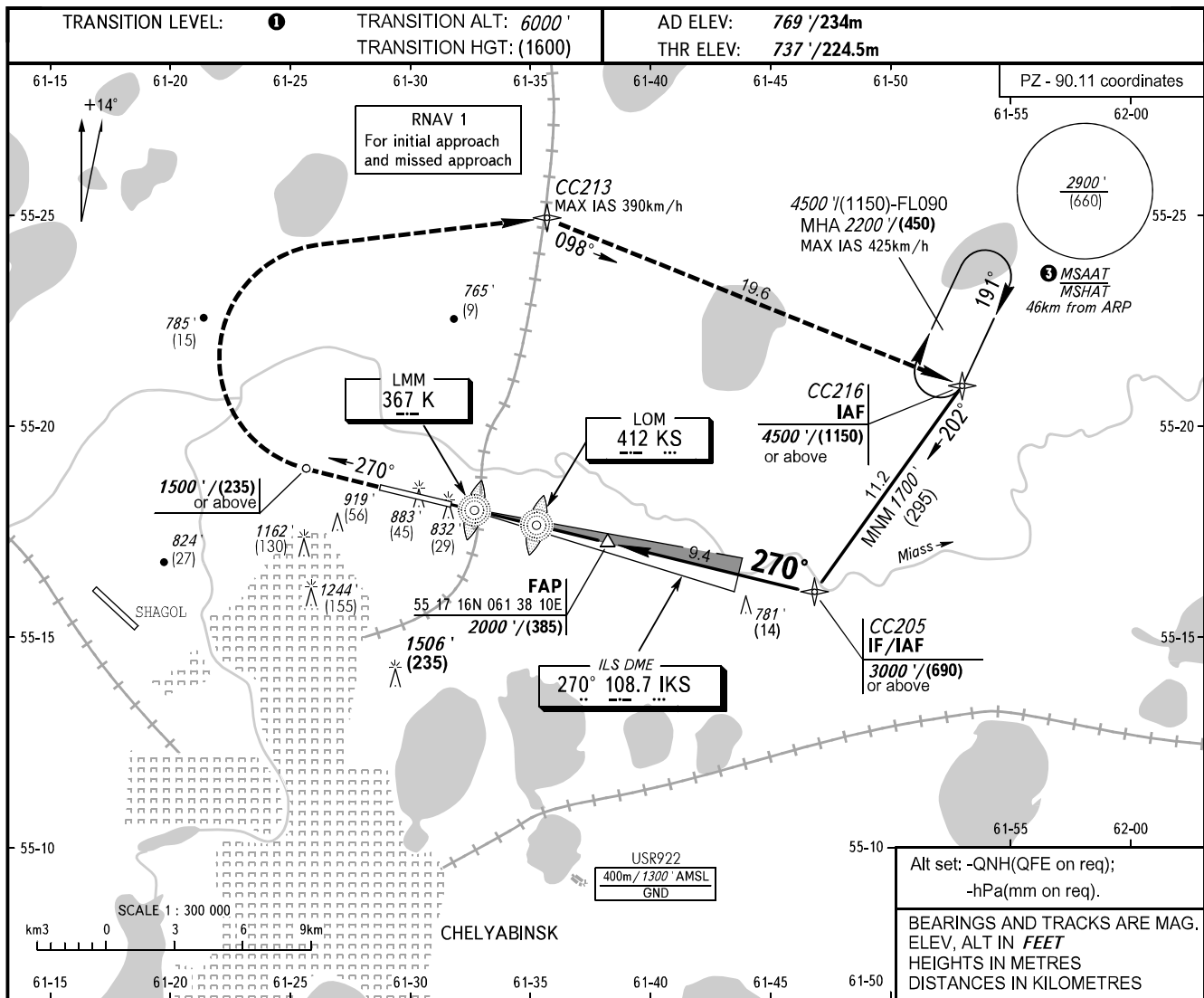


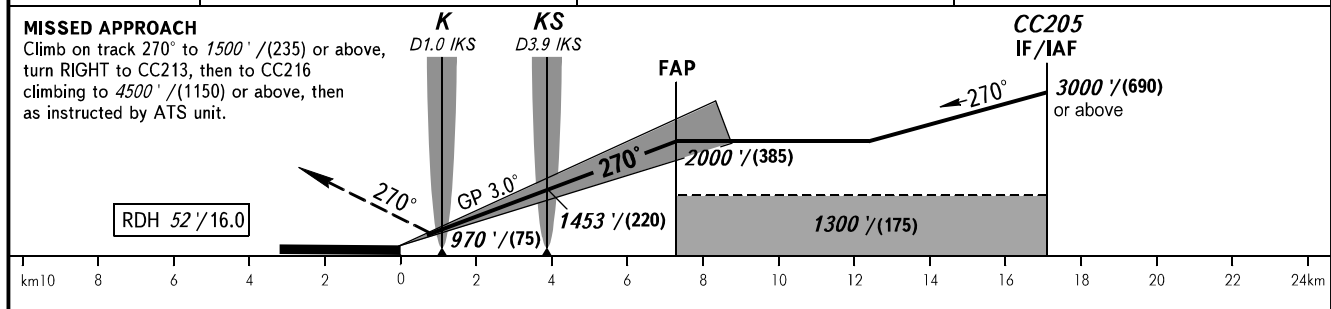
**INSTRUMENT
APPROACH
CHART - ICAO**

RADAR	133.200
START	125.200

CHELYABINSK, RUSSIA
BALANDINO
ILS Z CAT I/II/IIIA RWY 27



DIST to RW27	2.0	4.0	6.0
ALTITUDE/HEIGHT	1130' / (120)	1470' / (225)	1820' / (335)



OCA(H)		A	B	C	D											
Straight-in Approach	CAT I	937' (200') (61)	937' (200') (61)	937' (200') (61)	937' (200') (61)	1 TRANSITION LEVEL: - FL070 when QNH is 1013 hPa (760mm mercury column) or above; - FL080 when QNH is 977 hPa (733mm mercury column) or above, but less than 1013 hPa (760mm mercury column); - FL090 when QNH is less than 977 hPa (733mm mercury column). 2 MSAAT/MSHAT is computed for surface air temperature at the aerodrome -35.5°C.										
	CAT II	(100') (31)	(100') (31)	(100') (31)	(100') (31)											
	CAT IIIA	APPROVED														
Circling	1220' (450') (140)	1460' (690') (210)	1640' (870') (265)	1900' (1140') (345)												
GROUND SPEED	km/h	150	180	210	240		270	300	330	360	390	420	450			
RATE OF DESCENT	m/s	2.2	2.6	3.0	3.5		3.9	4.3	4.8	5.2	5.6	6.1	6.5			
RATE OF DESCENT	ft/min	433	512	591	689		768	846	945	1024	1102	1201	1280			