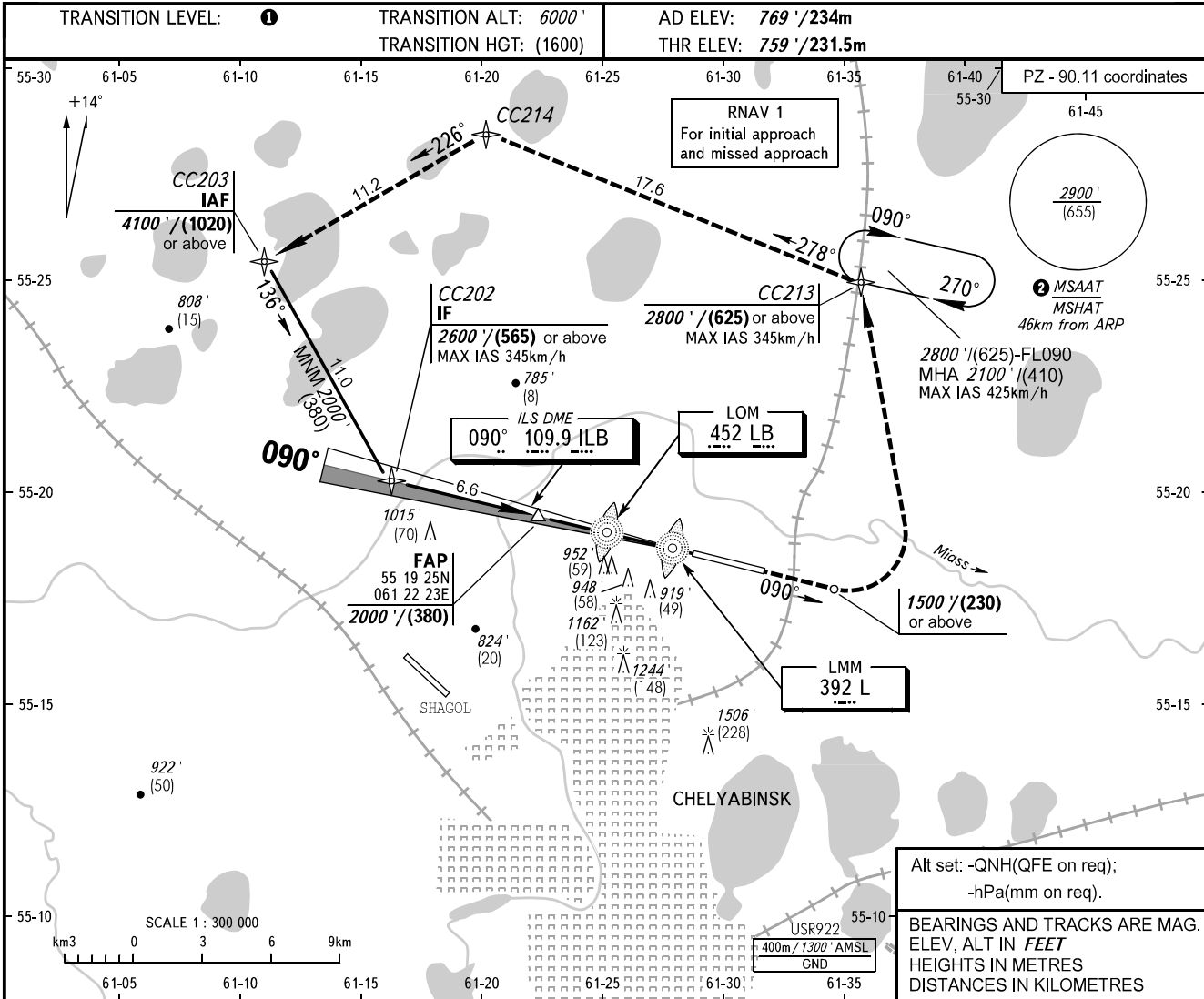


**INSTRUMENT
APPROACH
CHART - ICAO**

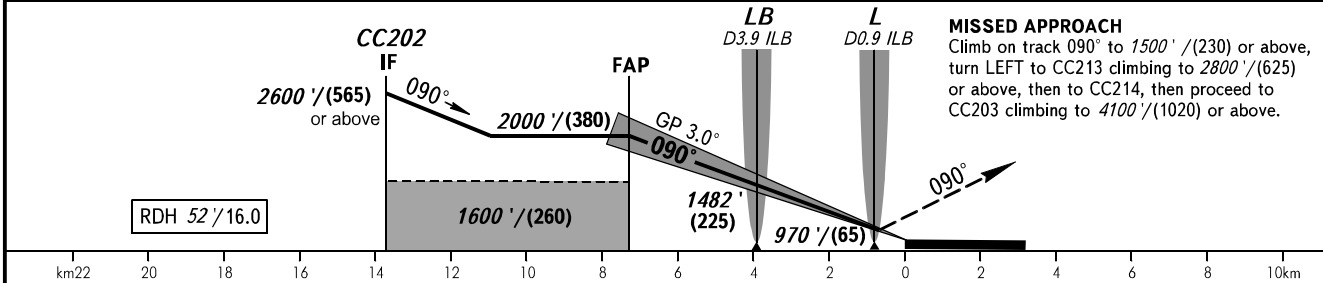
RADAR 133.200
START 125.200

**CHELYABINSK, RUSSIA
BALANDINO
ILS Z CAT I RWY 09**



Alt set: -QNH(QFE on req);
-hPa(mm on req).
BEARINGS AND TRACKS ARE MAG.
ELEV, ALT IN FEET
HEIGHTS IN METRES
DISTANCES IN KILOMETRES

DIST to RW09	6.0	4.0	2.0
ALTITUDE/HEIGHT	1840' / (330)	1500' / (230)	1160' / (125)



OCA(H)		A	B	C	D
Straight-in Approach	CAT I	959' (200') (61)	959' (200') (61)	959' (200') (61)	959' (200') (61)
	Circling	1220' (450') (140)	1460' (690') (210)	1640' (870') (265)	1900' (1140') (345)

1 TRANSITION LEVEL:
- FL070 when QNH is 1013 hPa (760mm mercury column) or above;
- FL080 when QNH is 977 hPa (733mm mercury column) or above, but less than 1013 hPa (760mm mercury column);
- FL090 when QNH is less than 977 hPa (733mm mercury column).
2 MSAAT/MSHAT is computed for surface air temperature at the aerodrome -35.5°C.

GROUND SPEED	km/h	150	180	210	240	270	300	330	360	390	420	450
RATE OF DESCENT	m/s	2.2	2.6	3.0	3.5	3.9	4.3	4.8	5.2	5.6	6.1	6.5
RATE OF DESCENT	ft/min	433	512	591	689	768	846	945	1024	1102	1201	1280

CHANGE: New chart