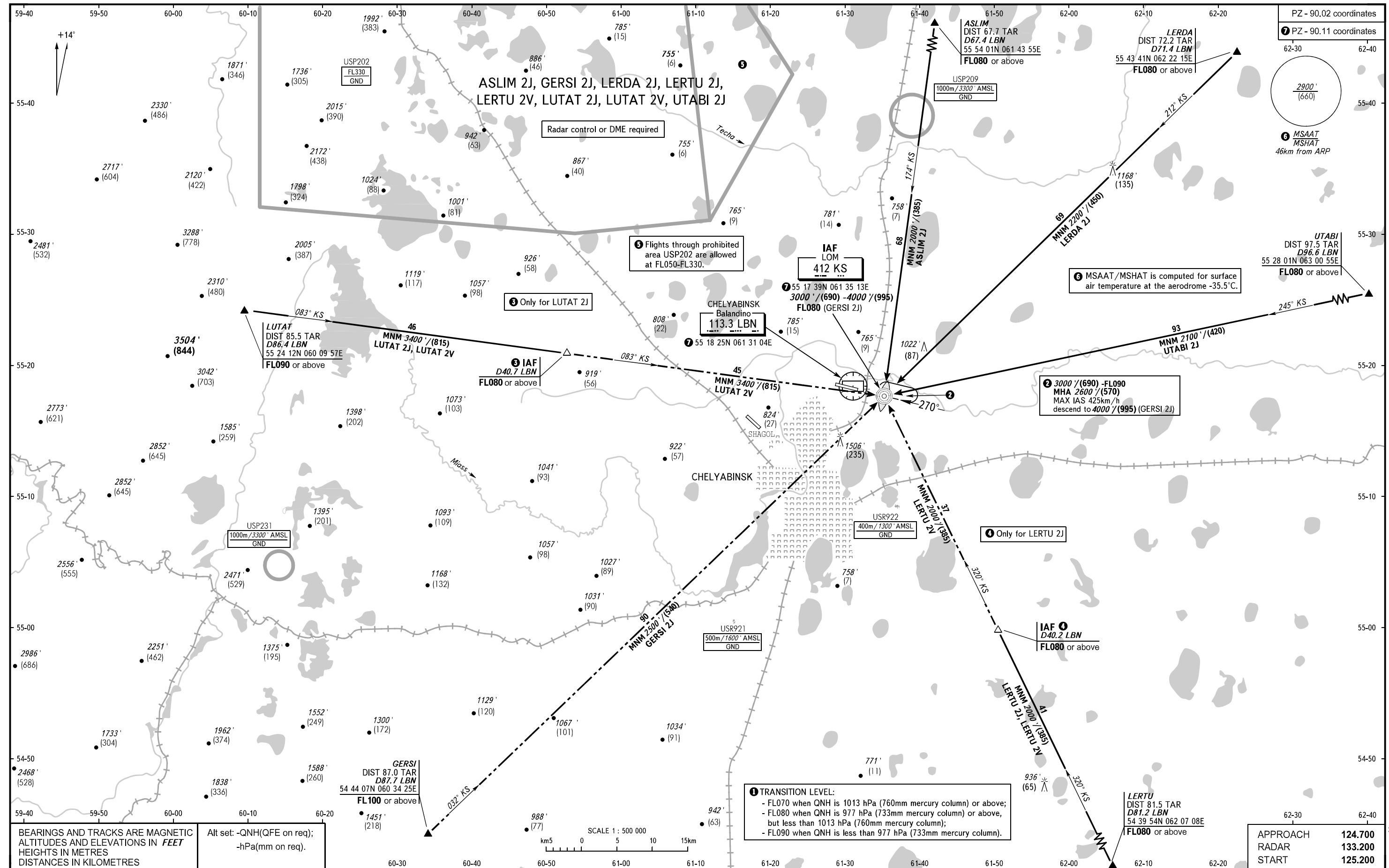


STANDARD ARRIVAL CHART  
INSTRUMENT (STAR) - ICAO

CHELYABINSK, RUSSIA  
BALANDINO  
RWY 27

TRANSITION  
LEVEL: 1



PZ - 90.02 coordinates  
7 PZ - 90.11 coordinates

2900' (660)

6 MSAAT/MSHAT  
46km from ARP

UTABI  
DIST 97.5 TAR  
D96.6 LBN  
55 28 01N 063 00 55E  
FL080 or above

2 3000'/(690) -FL090  
MHA 2600'/(570)  
MAX IAS 425km/h  
descend to 4000'/(995) (GERSI 2J)

4 Only for LERTU 2J

1 TRANSITION LEVEL:  
- FL070 when QNH is 1013 hPa (760mm mercury column) or above;  
- FL080 when QNH is 977 hPa (733mm mercury column) or above,  
but less than 1013 hPa (760mm mercury column);  
- FL090 when QNH is less than 977 hPa (733mm mercury column).

APPROACH	124.700
RADAR	133.200
START	125.200