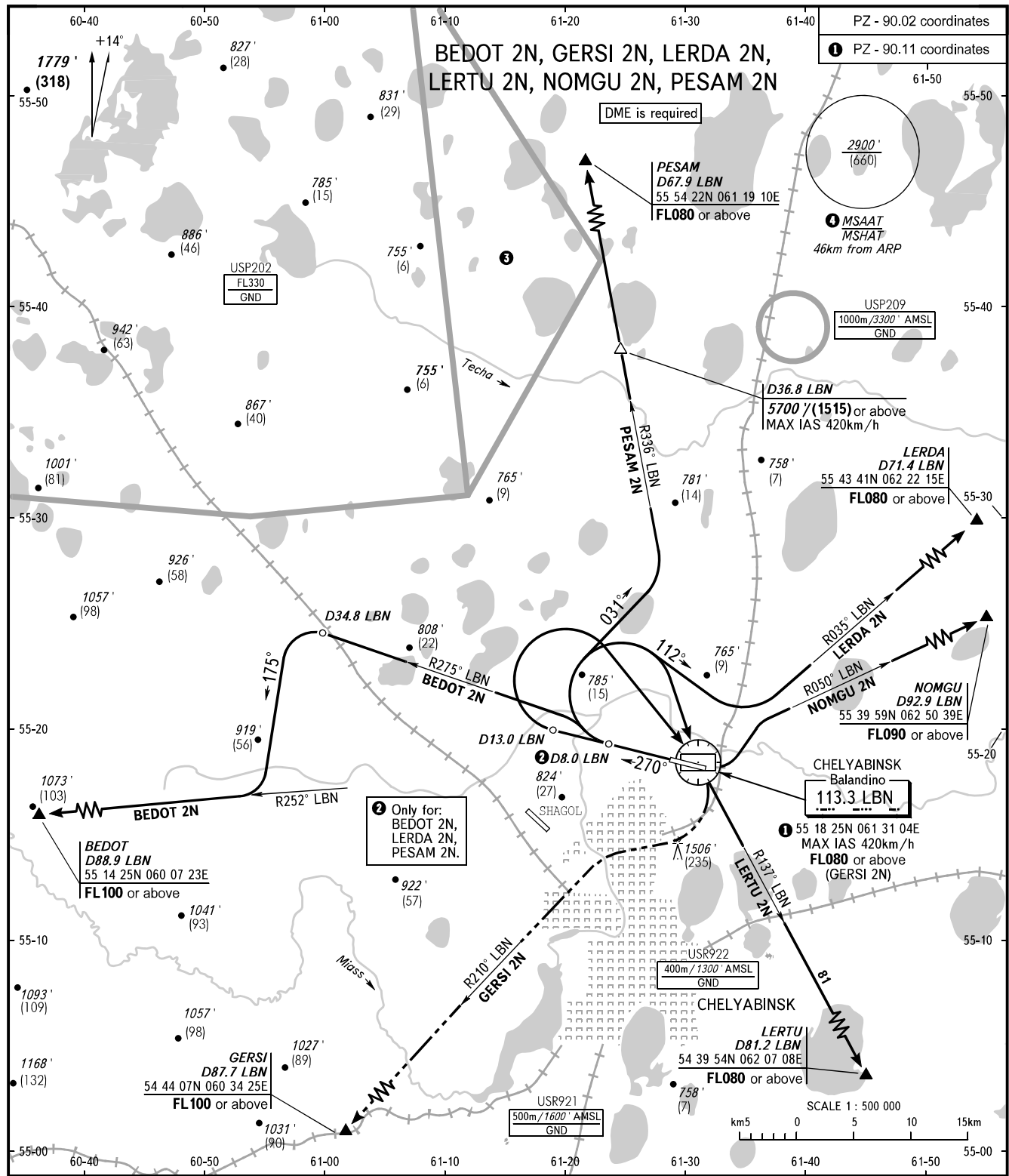


STANDARD DEPARTURE CHART  
INSTRUMENT (SID) - ICAO

TRANSITION ALT: **6000'**  
TRANSITION HGT: **(1600)**

**CHELYABINSK, RUSSIA**  
BALANDINO  
RWY 27



START	125.200
RADAR	133.200
APPROACH	124.700

**NOTE**  
The minimum climb gradient (required due to the airspace structure) is 5.5% up to FL080 for SID GERSI 2N.  
③ Flights through prohibited area USP202 are allowed at FL050-FL330.  
④ MSAAT/MSHAT is computed for surface air temperature at the aerodrome -35.5°C.

BEARINGS AND TRACKS ARE MAGNETIC ALTITUDES AND ELEVATIONS IN <b>FEET</b> HEIGHTS IN METRES DISTANCES IN KILOMETRES	Alt set: -QNH(QFE on req); -hPa(mm on req).
---	--