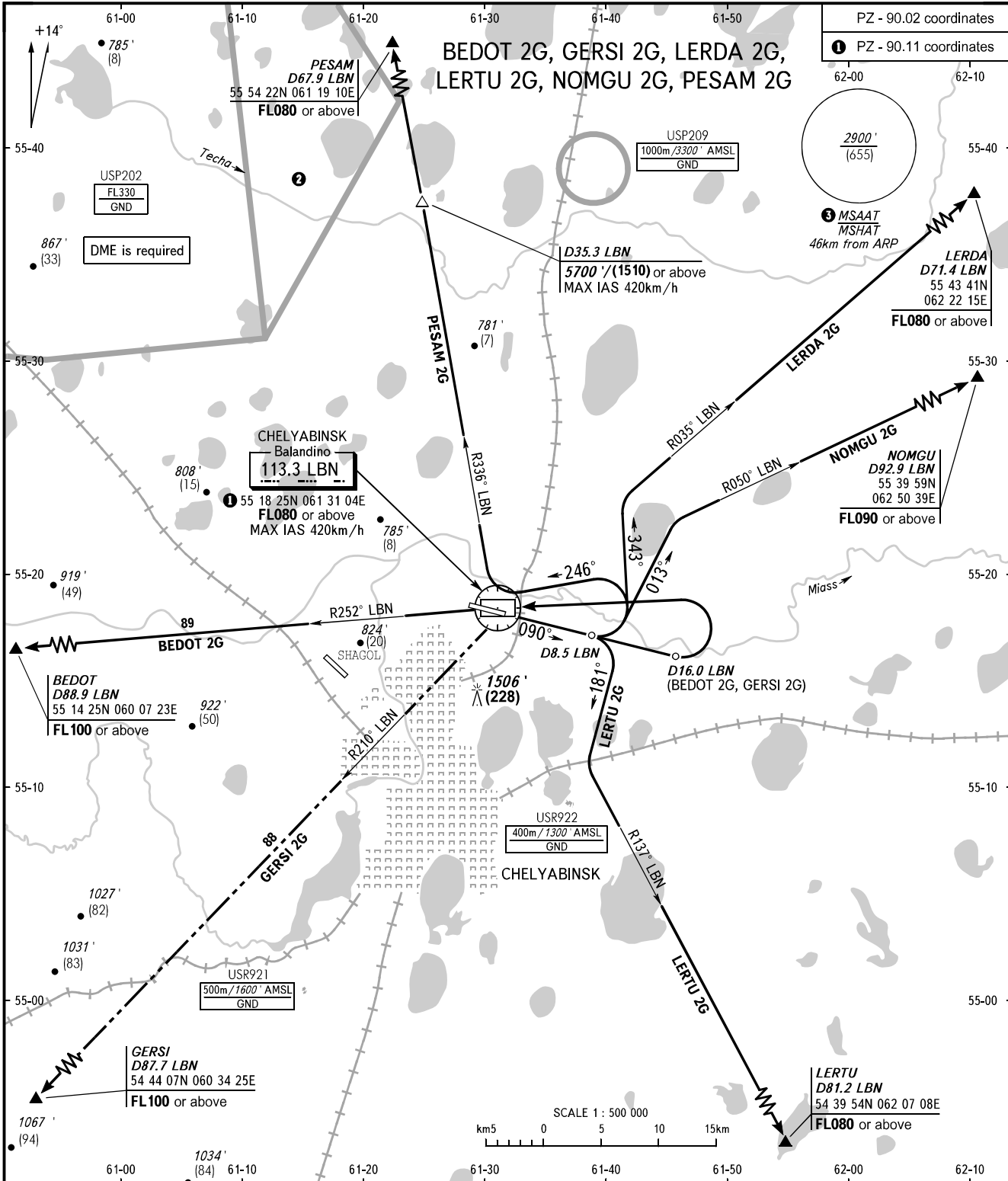


STANDARD DEPARTURE CHART
INSTRUMENT (SID) - ICAO

TRANSITION ALT: **6000'**
TRANSITION HGT: **(1600)**

CHELYABINSK, RUSSIA
BALANDINO
RWY 09



START **125.200**
RADAR **133.200**
APPROACH **124.700**

NOTE

The minimum climb gradient (required due to the airspace structure) is 5.2% up to FL080 for SID BEDOT 2G, GERSI 2G.

- ② Flights through prohibited area USP202 are allowed at FL050-FL330.
- ③ MSAAT/MSHAT is computed for surface air temperature at the aerodrome -35.5°C.

BEARINGS AND TRACKS ARE MAGNETIC
ALTITUDES AND ELEVATIONS IN FEET
HEIGHTS IN METRES
DISTANCES IN KILOMETRES

Alt set: -QNH(QFE on req);
-hPa(mm on req).

CHANGE: New chart