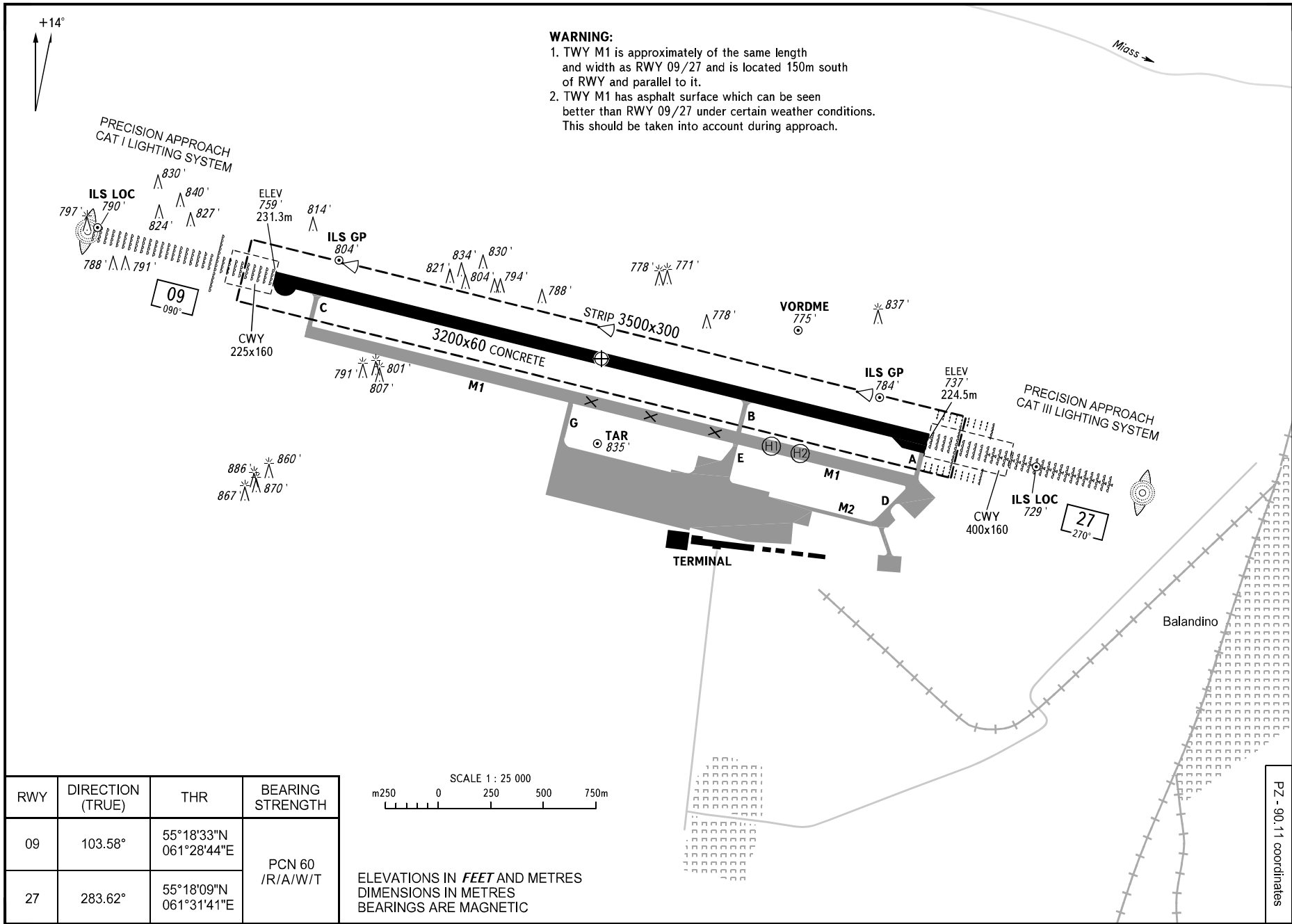


WARNING:

1. TWY M1 is approximately of the same length and width as RWY 09/27 and is located 150m south of RWY and parallel to it.
2. TWY M1 has asphalt surface which can be seen better than RWY 09/27 under certain weather conditions. This should be taken into account during approach.



AIP
RUSSIA
AERODROME
CHART - ICAO

ARP
55°18'21"N
061°30'13"E

ELEV
769 / 234m

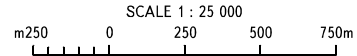
START
125.200

CHEL'YABINSK, RUSSIA
BALANDINO

AD 2.1 USCC-31
23 FEB 23

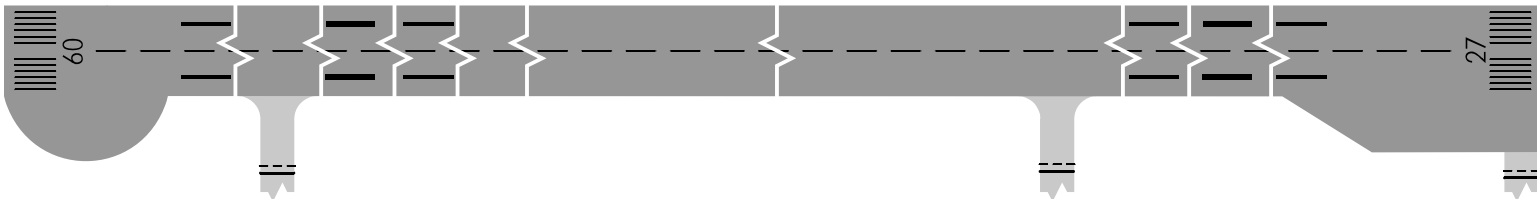
PZ - 90.11 coordinates

RWY	DIRECTION (TRUE)	THR	BEARING STRENGTH
09	103.58°	55°18'33"N 061°28'44"E	PCN 60 /R/A/W/T
27	283.62°	55°18'09"N 061°31'41"E	

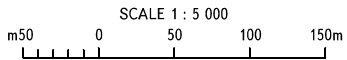
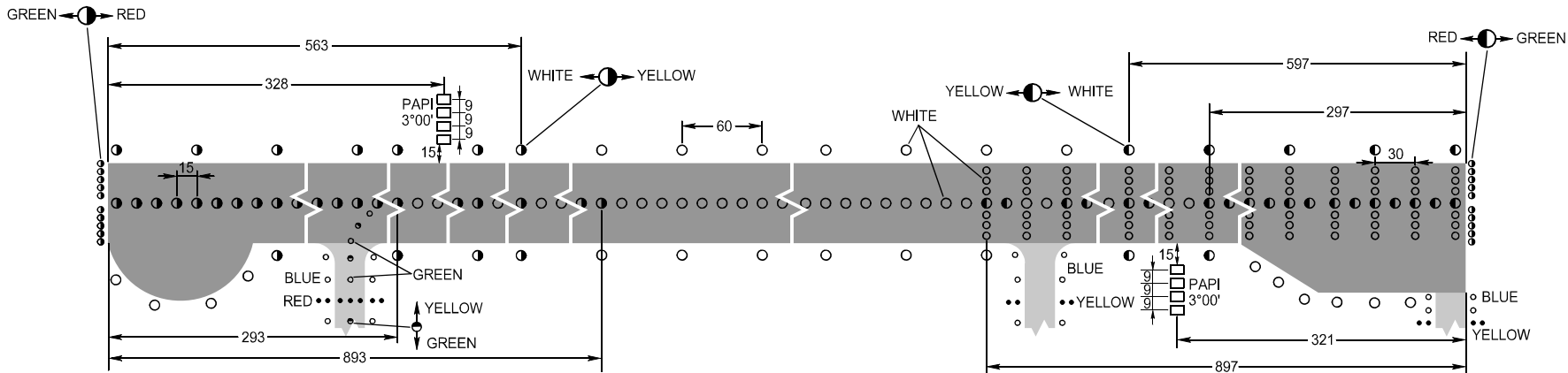


ELEVATIONS IN FEET AND METRES
DIMENSIONS IN METRES
BEARINGS ARE MAGNETIC

MARKING AIDS RWY 09 / 27 AND EXIT TWY



LIGHTING AIDS RWY 09 / 27 AND EXIT TWY



DIMENSIONS IN METRES

CHANGE: New chart