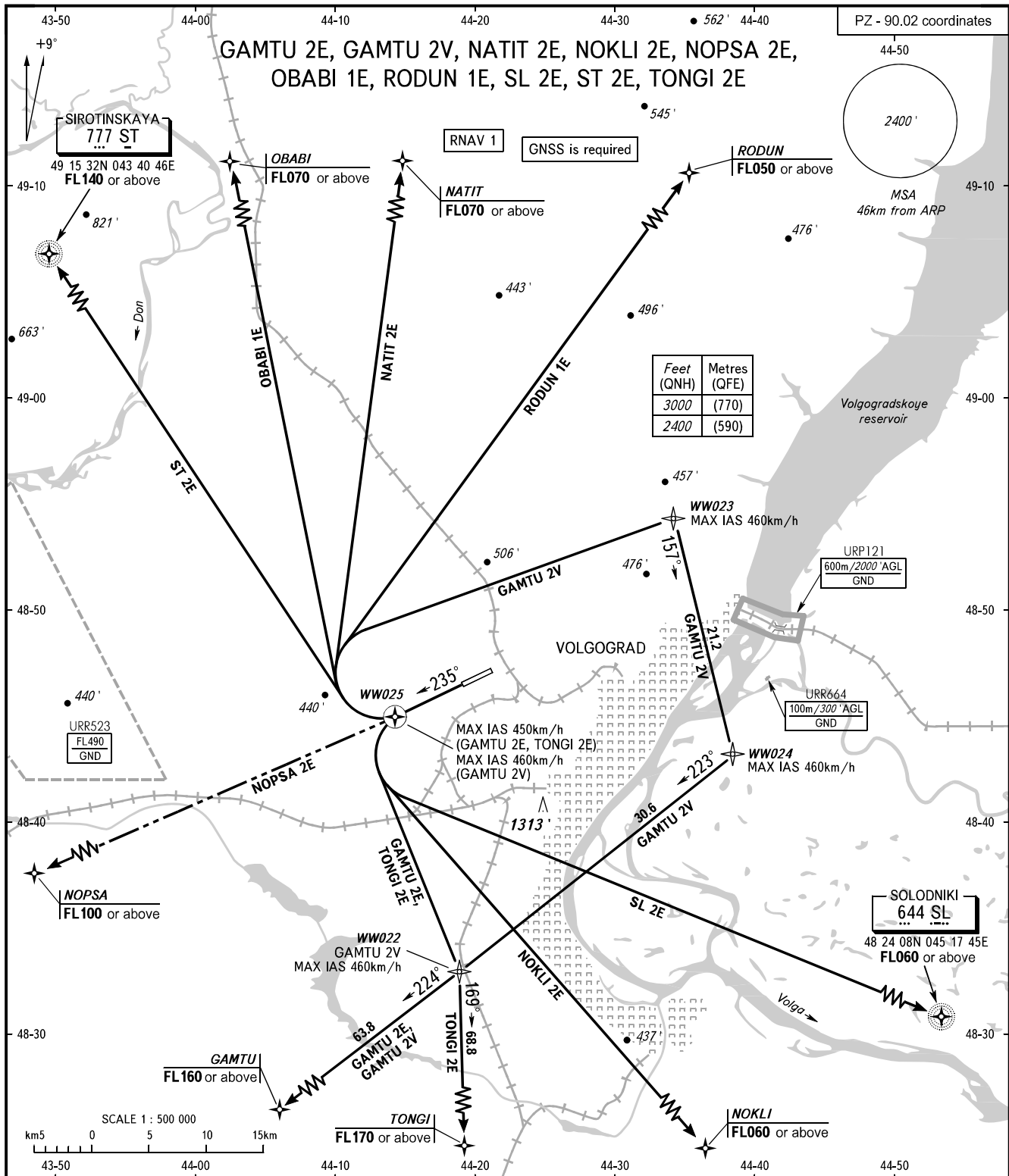


STANDARD DEPARTURE CHART  
INSTRUMENT (SID) - ICAO

TRANSITION  
ALTITUDE: 3000'

VOLGOGRAD, RUSSIA  
GUMRAK  
RNAV RWY 24



TOWER 128.000  
APPROACH 125.300

The minimum climb gradients are as follows  
(required due to the airspace structure):  
- 5.3% up to FL140 for SID ST 2E;  
- 4.8% up to FL170 for SID TONGI 2E;  
- 4.9% up to FL160 for SID GAMTU 2E.

BEARINGS AND TRACKS ARE MAGNETIC  
ALTITUDES AND ELEVATIONS IN FEET  
DISTANCES IN KILOMETRES

Alt set: -QNH(QFE on req);  
-hPa(mm on req).