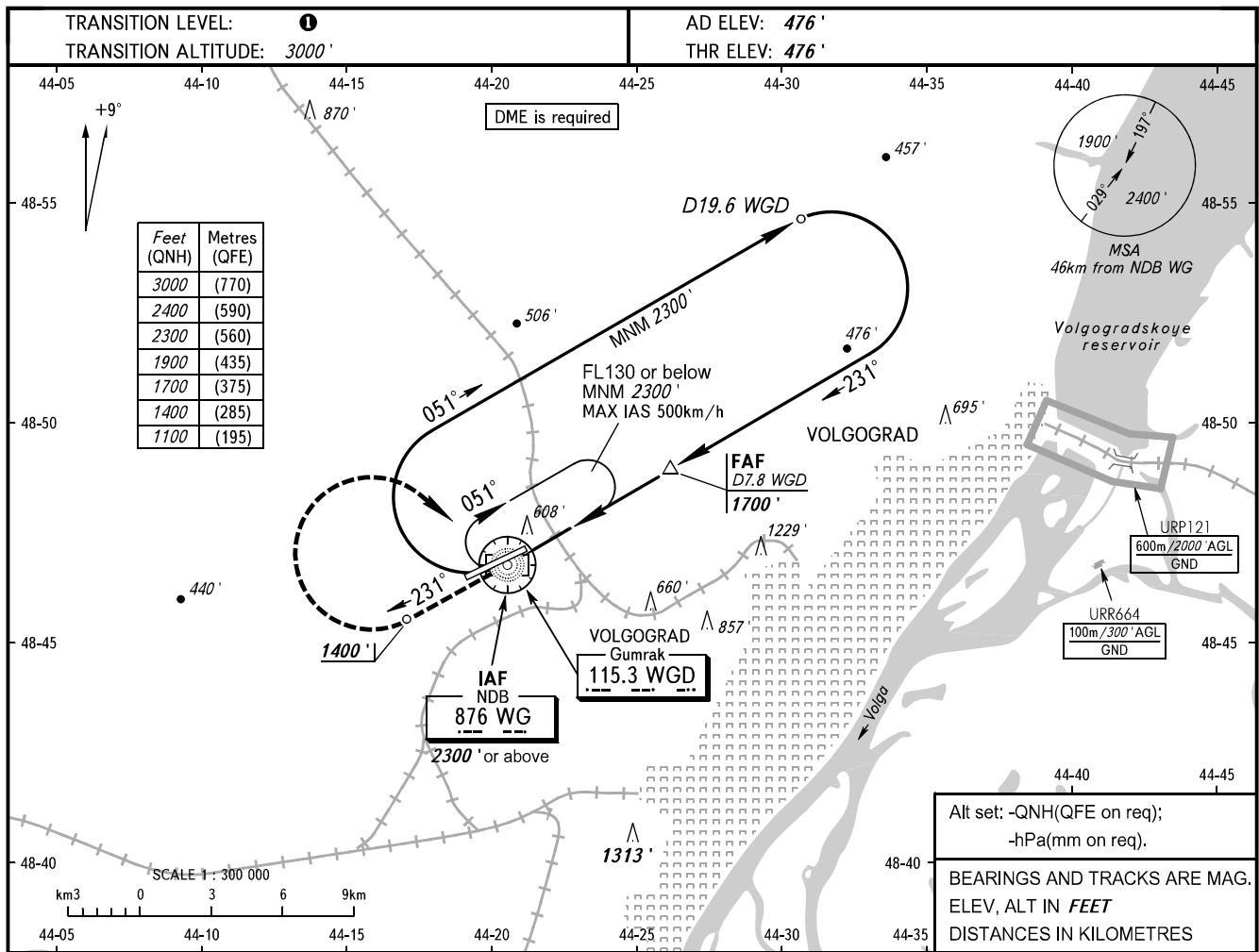


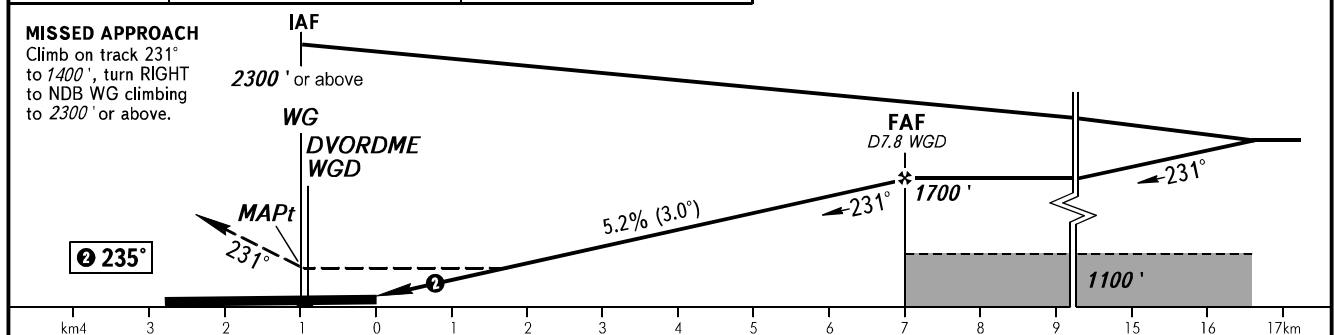
**INSTRUMENT  
APPROACH  
CHART - ICAO**

TOWER **128.000**

**VOLGOGRAD, RUSSIA**  
GUMRAK  
NDB Z RWY 24



DME WGD	4.0	6.0
ALTITUDE	1070'	1410'



	OCA(H)									
	A	B	C	D						
Straight-in Approach	860' (380')	860' (380')	860' (380')	860' (380')						
Circling	910' (430')	970' (500')	1070' (600')	1260' (780')						
GROUND SPEED	km/h	150	180	210	240	270	300	330	360	390
RATE OF DESCENT	m/s	2.2	2.6	3.0	3.5	3.9	4.3	4.8	5.2	5.6
	ft/min	427	512	597	682	768	853	938	1024	1109

**TRANSITION LEVEL:**  
- FL040 when QNH is 1013 hPa (760mm mercury column) or above;  
- FL050 when QNH is 977 hPa (733mm mercury column) or above, but less than 1013 hPa (760mm mercury column);  
- FL060 when QNH is less than 977 hPa (733mm mercury column).

**WARNING:**  
1. Final approach track is offset by 4° from the runway centre line.  
2. MAPt at NDB WG. Timing not authorized for defining MAPt. Turn before passing MAPt is PROHIBITED.

CHANGE: URP121