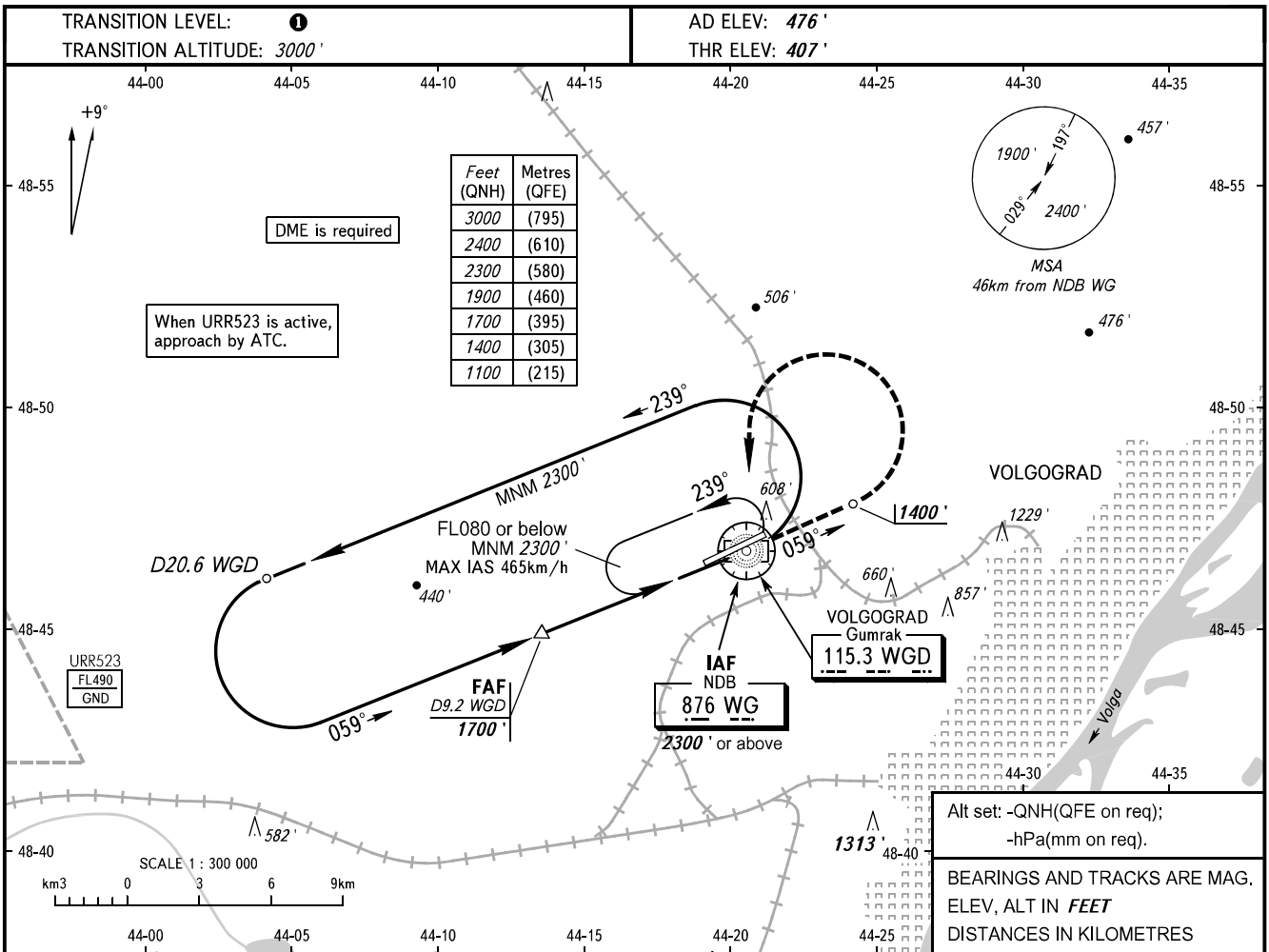


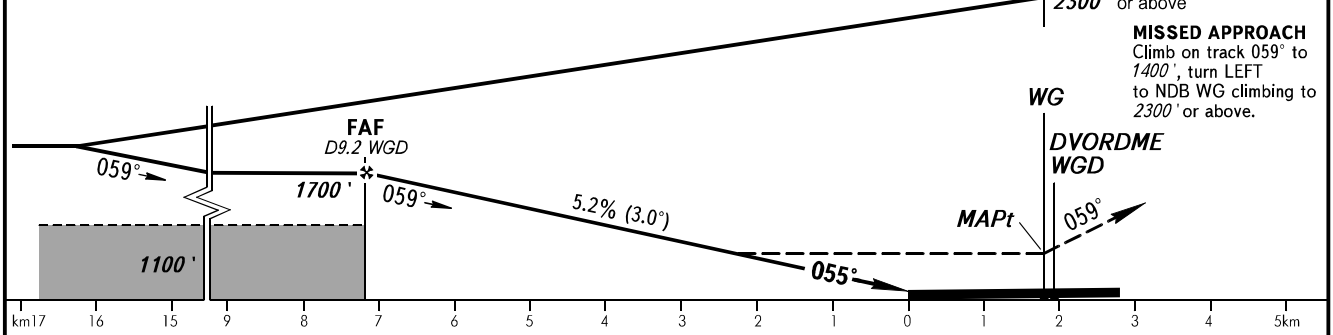
**INSTRUMENT
APPROACH
CHART - ICAO**

TOWER **128.000**

VOLGOGRAD, RUSSIA
GUMRAK
NDB Z RWY 06



DME WGD	8.0	6.0
ALTITUDE	1490'	1150'



OCA(H)		A	B	C	D
Straight-in	Approach	800' (390')	800' (390')	800' (390')	800' (390')
Circling		910' (430')	970' (500')	1070' (600')	1260' (780')

TRANSITION LEVEL:
- FL040 when QNH is 1013 hPa (760mm mercury column) or above;
- FL050 when QNH is 977 hPa (733mm mercury column) or above, but less than 1013 hPa (760mm mercury column);
- FL060 when QNH is less than 977 hPa (733mm mercury column).

WARNING:
1. Final approach track is offset by 4° from the runway centre line.
2. MAPt at NDB WG. Timing not authorized for defining MAPt. Turn before passing MAPt is PROHIBITED.

GROUND SPEED	km/h	150	180	210	240	270	300	330	360	390
	RATE OF DESCENT	m/s	2.2	2.6	3.0	3.5	3.9	4.3	4.8	5.2
	ft/min	427	512	597	682	768	853	938	1024	1109

CHANGE: NIL