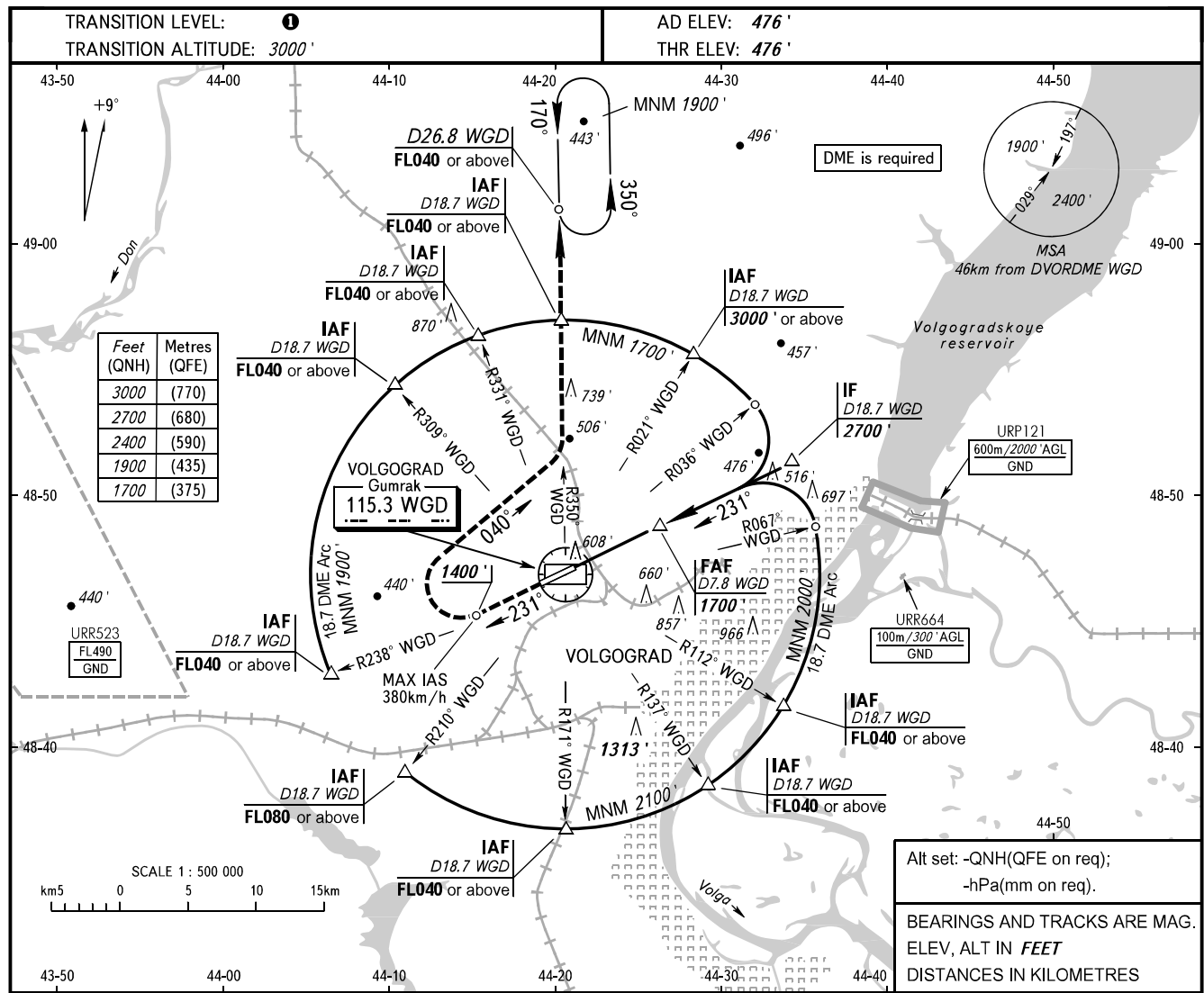


**INSTRUMENT
APPROACH
CHART - ICAO**

**VOLGOGRAD, RUSSIA
GUMRAK
DVOR Y RWY 24**

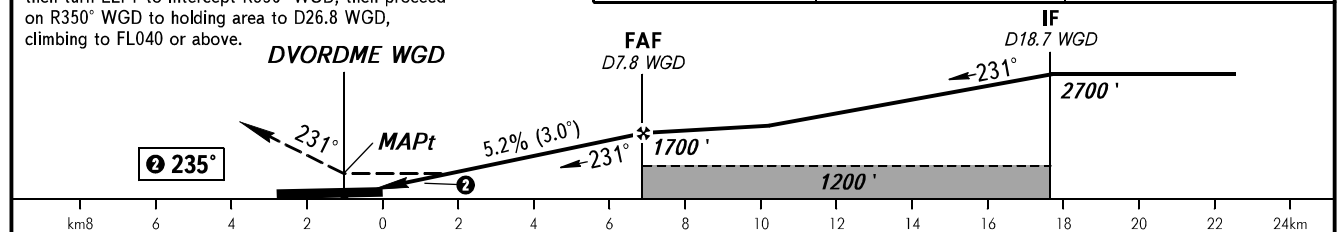
TOWER 128.000



MISSED APPROACH

Climb on track 231° to 1400', turn RIGHT onto track 040°, then turn LEFT to intercept R350° WGD, then proceed on R350° WGD to holding area to D26.8 WGD, climbing to FL040 or above.

DME WGD	4.0	6.0
ALTITUDE	1070'	1410'



OCA(H)		A	B	C	D						
Straight-in	Approach	860' (380')	860' (380')	860' (380')	860' (380')						
Circling		910' (430')	970' (500')	1070' (600')	1260' (780')						
GROUND SPEED		km/h	150	180	210	240	270	300	330	360	390
RATE OF DESCENT		m/s	2.2	2.6	3.0	3.5	3.9	4.3	4.8	5.2	5.6
		ft/min	427	512	597	682	768	853	938	1024	1109

TRANSITION LEVEL:

- FL040 when QNH is 1013 hPa (760mm mercury column) or above;
- FL050 when QNH is 977 hPa (733mm mercury column) or above, but less than 1013 hPa (760mm mercury column);
- FL060 when QNH is less than 977 hPa (733mm mercury column).

WARNING:

1. Final approach track is offset by 4° from the runway centre line.
2. MAPt at DVORDME WGD. Timing not authorized for defining MAPt.

Turn before passing MAPt is PROHIBITED.