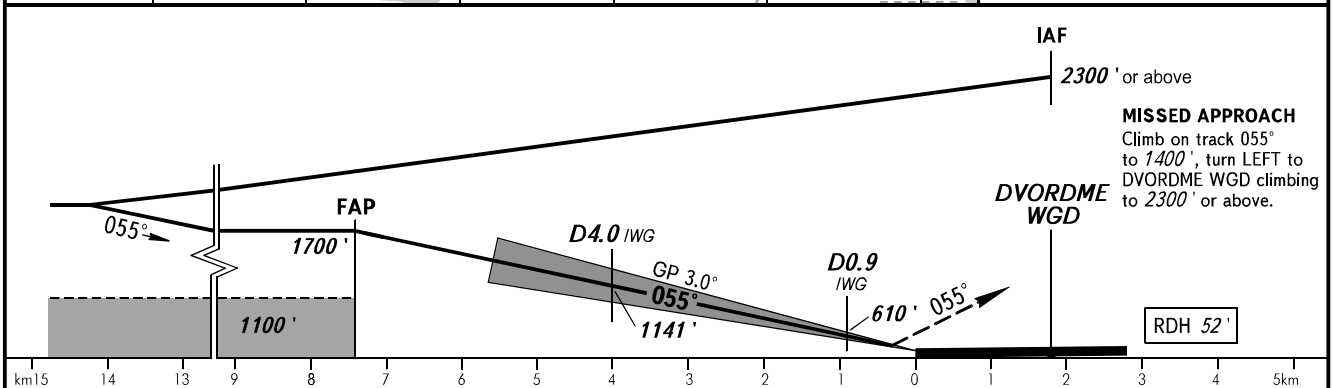
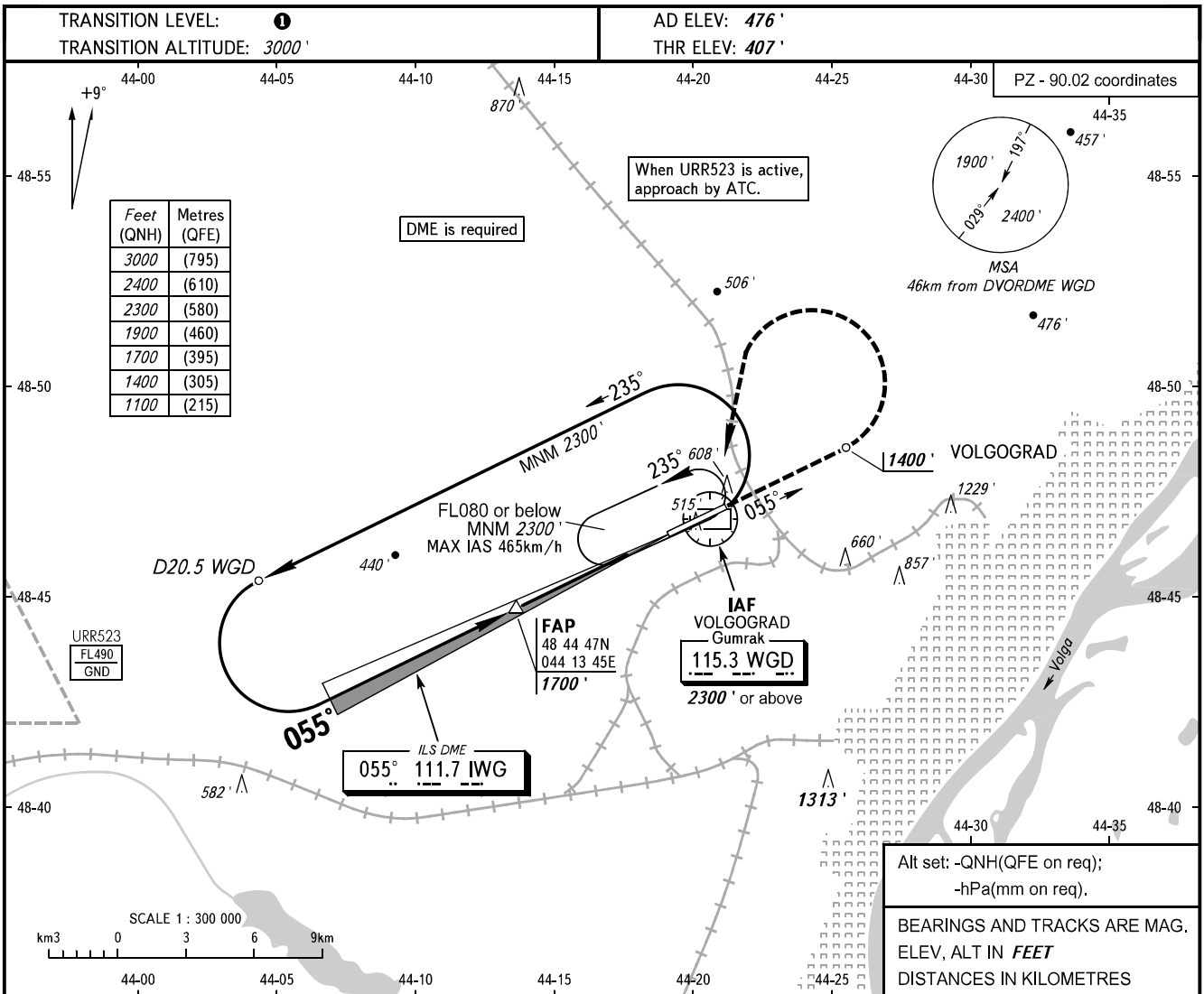


**INSTRUMENT
APPROACH
CHART - ICAO**

TOWER **128.000**

**VOLGOGRAD, RUSSIA
GUMRAK
ILS W RWY 06 CAT I/II/III**



OCA(H)		A	B	C	D	1 TRANSITION LEVEL: - FL040 when QNH is 1013 hPa (760mm mercury column) or above; - FL050 when QNH is 977 hPa (733mm mercury column) or above, but less than 1013 hPa (760mm mercury column); - FL060 when QNH is less than 977 hPa (733mm mercury column).					
Straight-in Approach	CAT I	595' (189')	607' (201')	615' (209')	626' (220')						
	CAT II	476' (69')	493' (86')	536' (130')	550' (144')						
	CAT IIIA	APPROVED									
Circling		910' (430')	970' (500')	1070' (600')	1260' (780')						
GROUND SPEED		km/h	150	180	210	240	270	300	330	360	390
RATE OF DESCENT		m/s	2.2	2.6	3.0	3.5	3.9	4.3	4.8	5.2	5.6
		ft/min	427	512	597	682	768	853	938	1024	1109

CHANGE: NIL