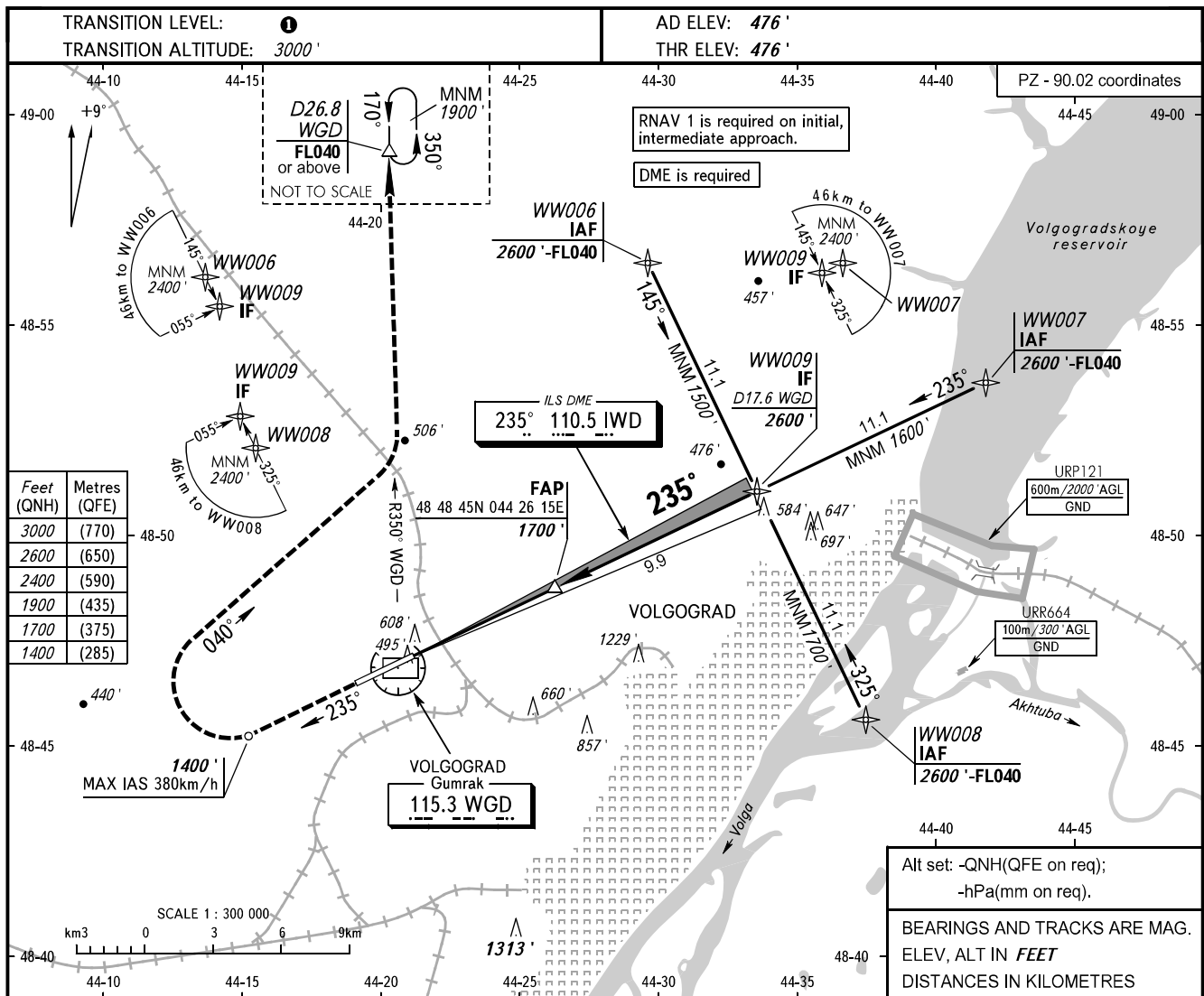


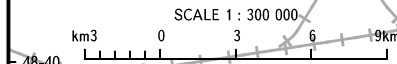
**INSTRUMENT
APPROACH
CHART - ICAO**

TOWER **128.000**

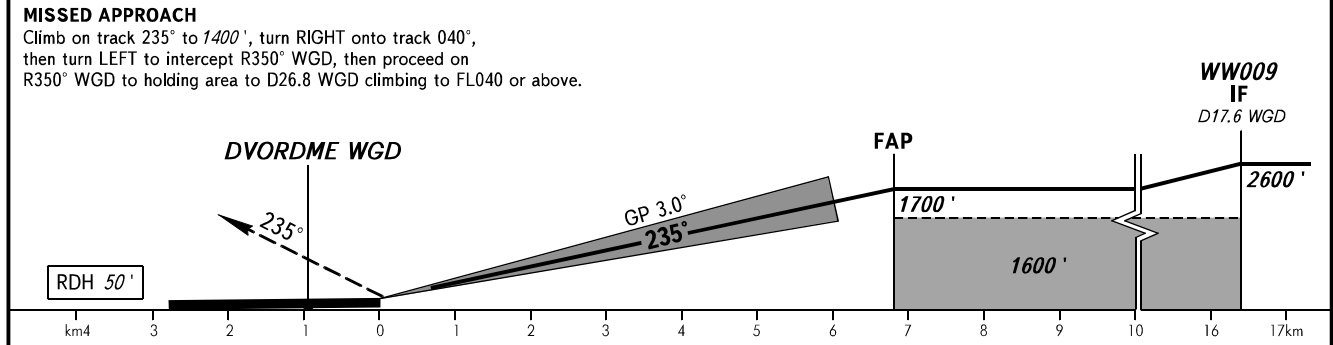
**VOLGOGRAD, RUSSIA
GUMRAK
ILS Y RWY 24 CAT I**



Feet (QNH)	Metres (QFE)
3000	(770)
2600	(650)
2400	(590)
1900	(435)
1700	(375)
1400	(285)



Alt set: -QNH(QFE on req);
-hPa(mm on req).
BEARINGS AND TRACKS ARE MAG.
ELEV, ALT IN FEET
DISTANCES IN KILOMETRES



OCA(H)		A	B	C	D
Straight-in	CAT I	624' (148')	636' (160')	644' (168')	655' (179')
	Approach				
Circling		910' (430')	970' (500')	1070' (600')	1260' (780')

TRANSITION LEVEL:
- FL040 when QNH is 1013 hPa (760mm mercury column) or above;
- FL050 when QNH is 977 hPa (733mm mercury column) or above, but less than 1013 hPa (760mm mercury column);
- FL060 when QNH is less than 977 hPa (733mm mercury column).

GROUND SPEED	km/h	150	180	210	240	270	300	330	360	390
RATE OF DESCENT	m/s	2.2	2.6	3.0	3.5	3.9	4.3	4.8	5.2	5.6
	ft/min	427	512	597	682	768	853	938	1024	1109