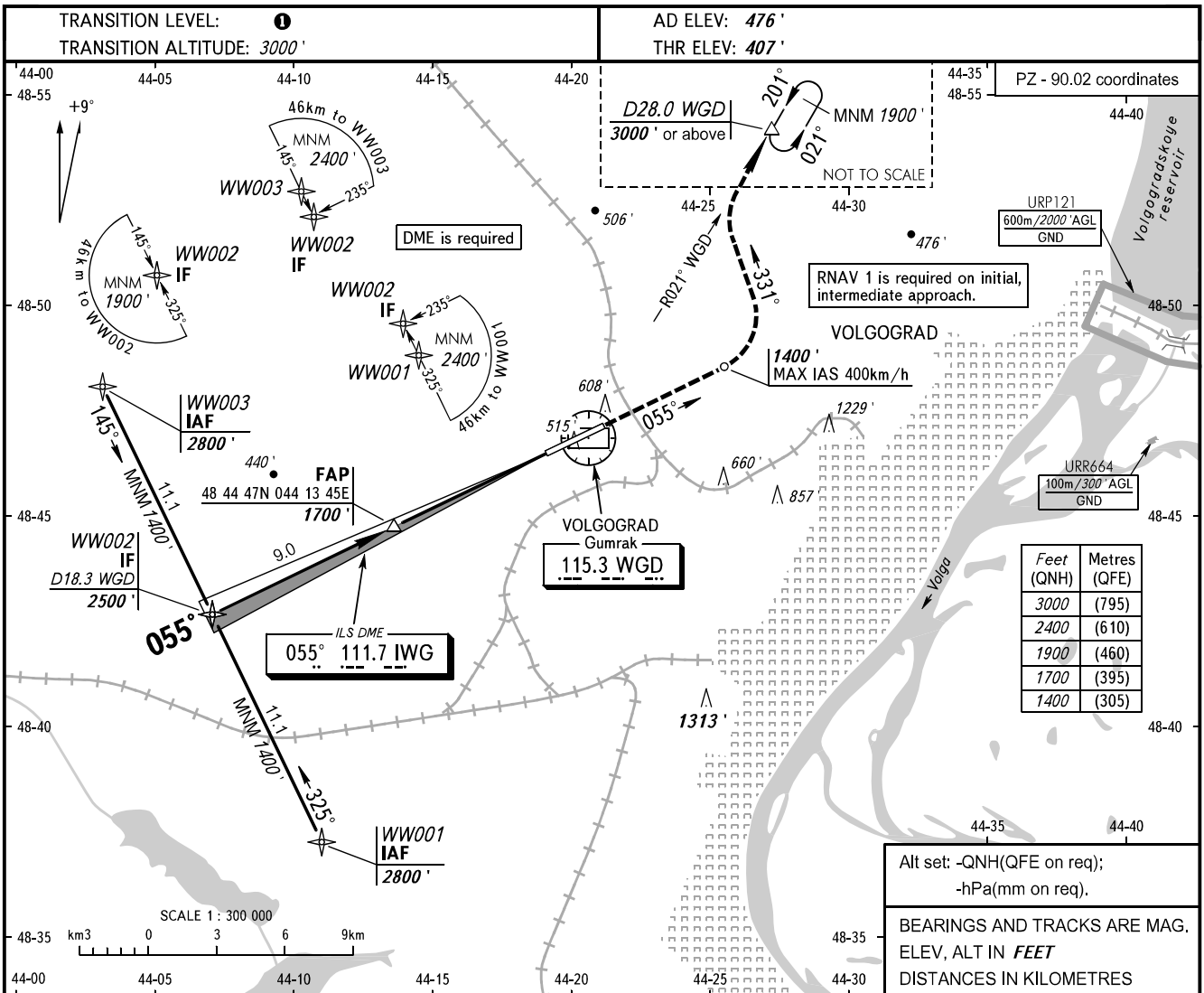


**INSTRUMENT  
APPROACH  
CHART - ICAO**

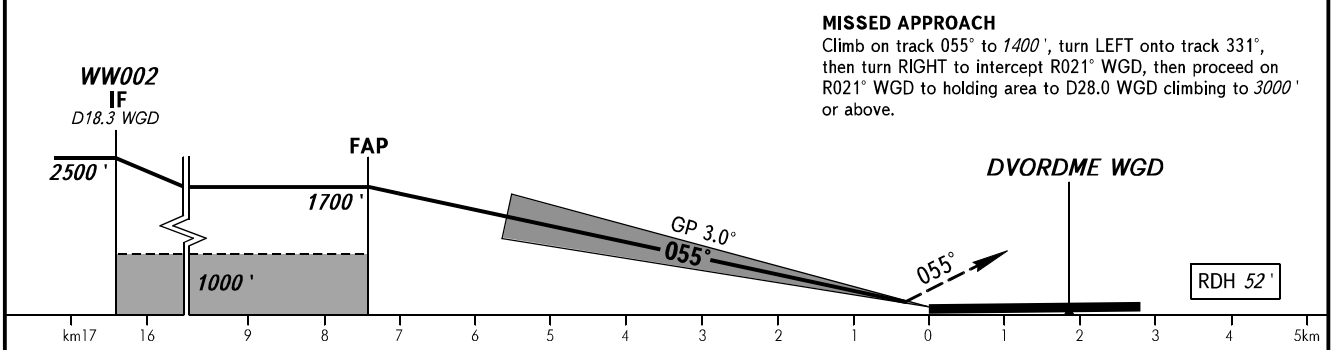
TOWER **128.000**

**VOLGOGRAD, RUSSIA  
GUMRAK  
ILS Y RWY 06 CAT I/II/III**



Feet (QNH)	Metres (QFE)
3000	(795)
2400	(610)
1900	(460)
1700	(395)
1400	(305)

Alt set: -QNH(QFE on req);  
-hPa(mm on req).  
BEARINGS AND TRACKS ARE MAG.  
ELEV, ALT IN FEET  
DISTANCES IN KILOMETRES



**MISSED APPROACH**  
Climb on track 055° to 1400', turn LEFT onto track 331°, then turn RIGHT to intercept R021° WGD, then proceed on R021° WGD to holding area to D28.0 WGD climbing to 3000' or above.

OCA(H)		A	B	C	D
Straight-in	CAT I	595' (189')	607' (201')	615' (209')	626' (220')
	CAT II	476' (69')	493' (86')	536' (130')	550' (144')
	CAT III	APPROVED			
Circling		910' (430')	970' (500')	1070' (600')	1260' (780')

**TRANSITION LEVEL:**  
- FL040 when QNH is 1013 hPa (760mm mercury column) or above;  
- FL050 when QNH is 977 hPa (733mm mercury column) or above, but less than 1013 hPa (760mm mercury column);  
- FL060 when QNH is less than 977 hPa (733mm mercury column).

GROUND SPEED	km/h	150	180	210	240	270	300	330	360	390
RATE OF DESCENT	m/s	2.2	2.6	3.0	3.5	3.9	4.3	4.8	5.2	5.6
	ft/min	427	512	597	682	768	853	938	1024	1109

CHANGE: URP121