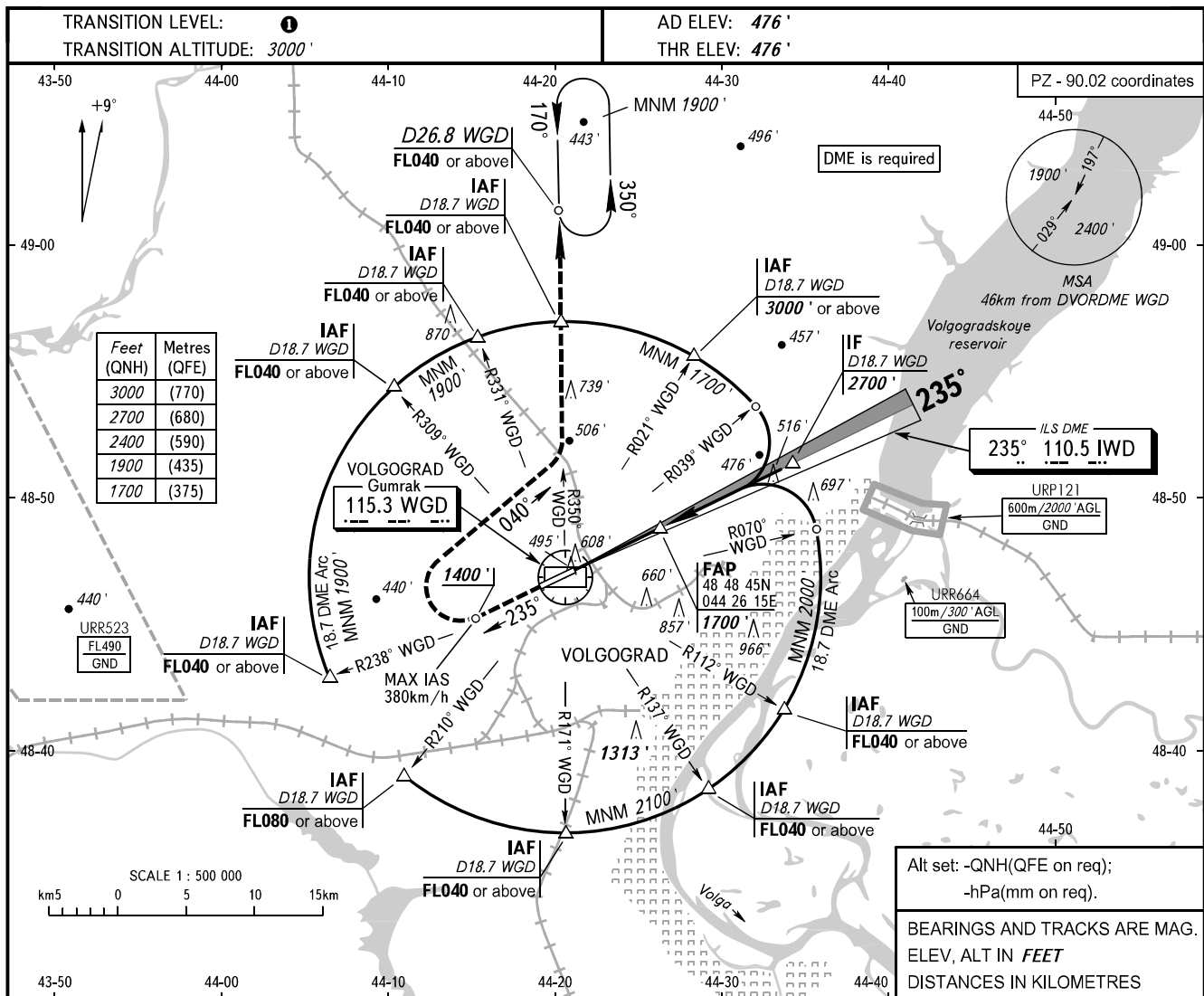


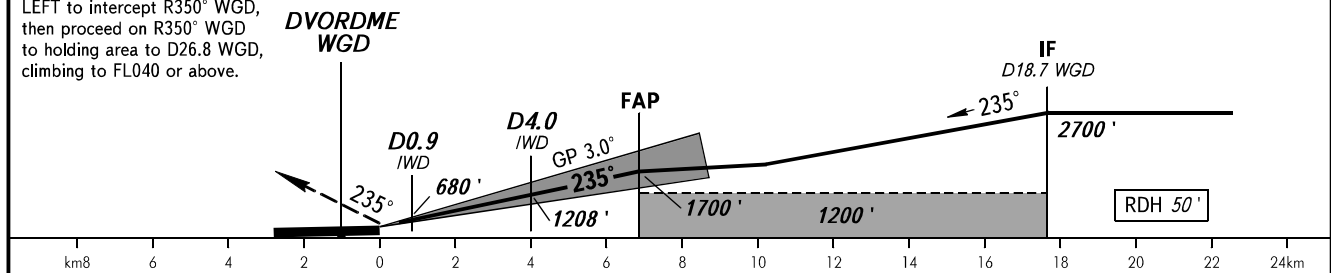
**INSTRUMENT  
APPROACH  
CHART - ICAO**

TOWER 128.000

**VOLGOGRAD, RUSSIA**  
GUMRAK  
ILS Z RWY 24 CAT I



**MISSED APPROACH**  
Climb on track 235° to 1400', turn RIGHT onto track 040°, then turn LEFT to intercept R350° WGD, then proceed on R350° WGD to holding area to D26.8 WGD, climbing to FL040 or above.



OCA(H)		A	B	C	D
Straight-in	<b>CAT I</b>	624' (148')	636' (160')	644' (168')	655' (179')
	Approach				
Circling		910' (430')	970' (500')	1070' (600')	1260' (780')

**1** TRANSITION LEVEL:  
- FL040 when QNH is 1013 hPa (760mm mercury column) or above;  
- FL050 when QNH is 977 hPa (733mm mercury column) or above, but less than 1013 hPa (760mm mercury column);  
- FL060 when QNH is less than 977 hPa (733mm mercury column).  
Turn before passing MAPt is PROHIBITED.

GROUND SPEED	km/h	150	180	210	240	270	300	330	360	390
	RATE OF DESCENT	m/s	2.2	2.6	3.0	3.5	3.9	4.3	4.8	5.2
	ft/min	427	512	597	682	768	853	938	1024	1109