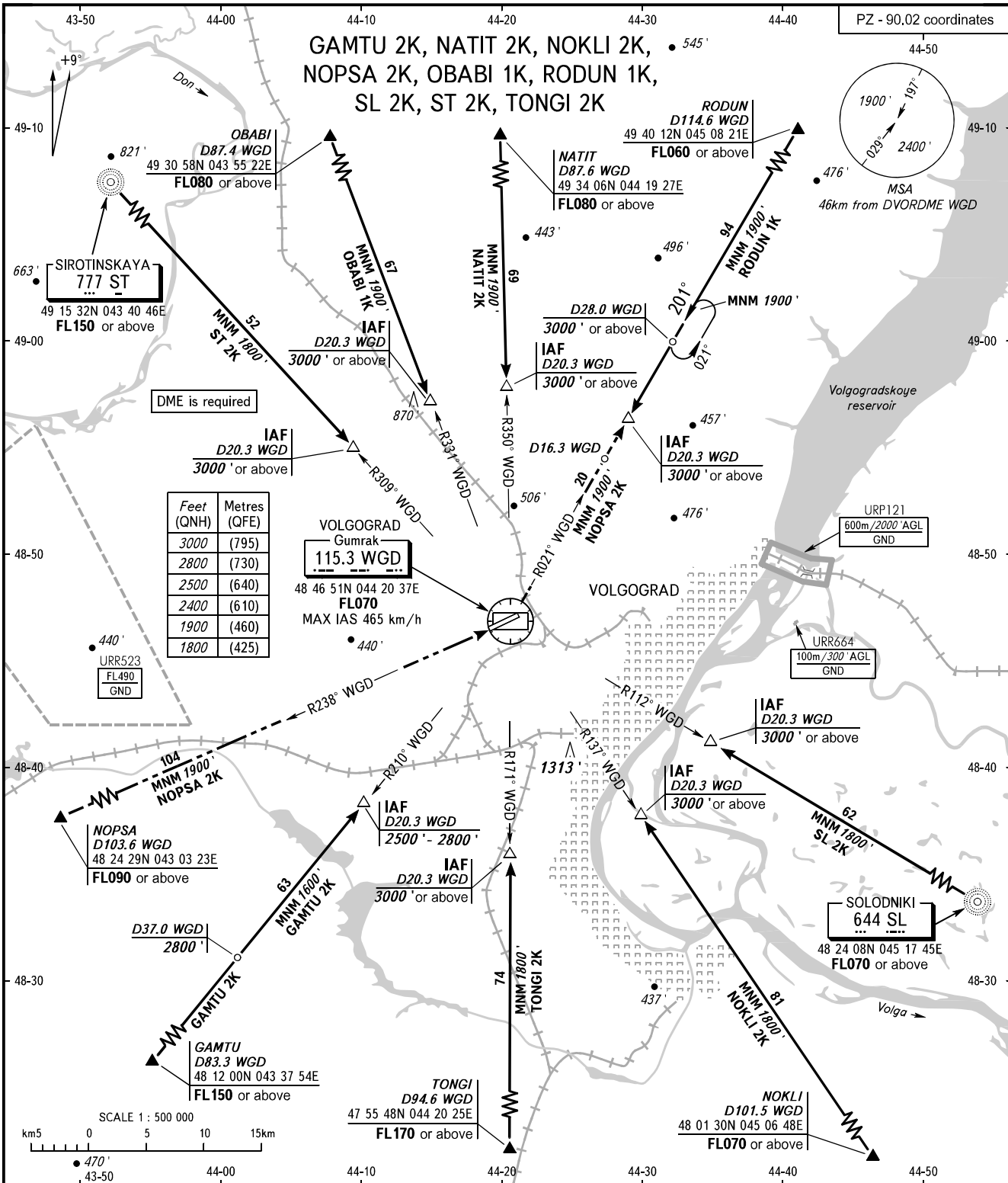


STANDARD ARRIVAL CHART
INSTRUMENT (STAR) - ICAO

VOLGOGRAD, RUSSIA
GUMRAK
RWY 06

TRANSITION
LEVEL: ①



APPROACH 125.300
TOWER 128.000

- ① TRANSITION LEVEL:
- FL040 when QNH is 1013 hPa (760mm mercury column) or above;
 - FL050 when QNH is 977 hPa (733mm mercury column) or above, but less than 1013 hPa (760mm mercury column);
 - FL060 when QNH is less than 977 hPa (733mm mercury column).

BEARINGS AND TRACKS ARE MAGNETIC
ALTITUDES AND ELEVATIONS IN FEET
DISTANCES IN KILOMETRES

Alt set: -QNH(QFE on req);
-hPa(mm on req).

CHANGE: URP121