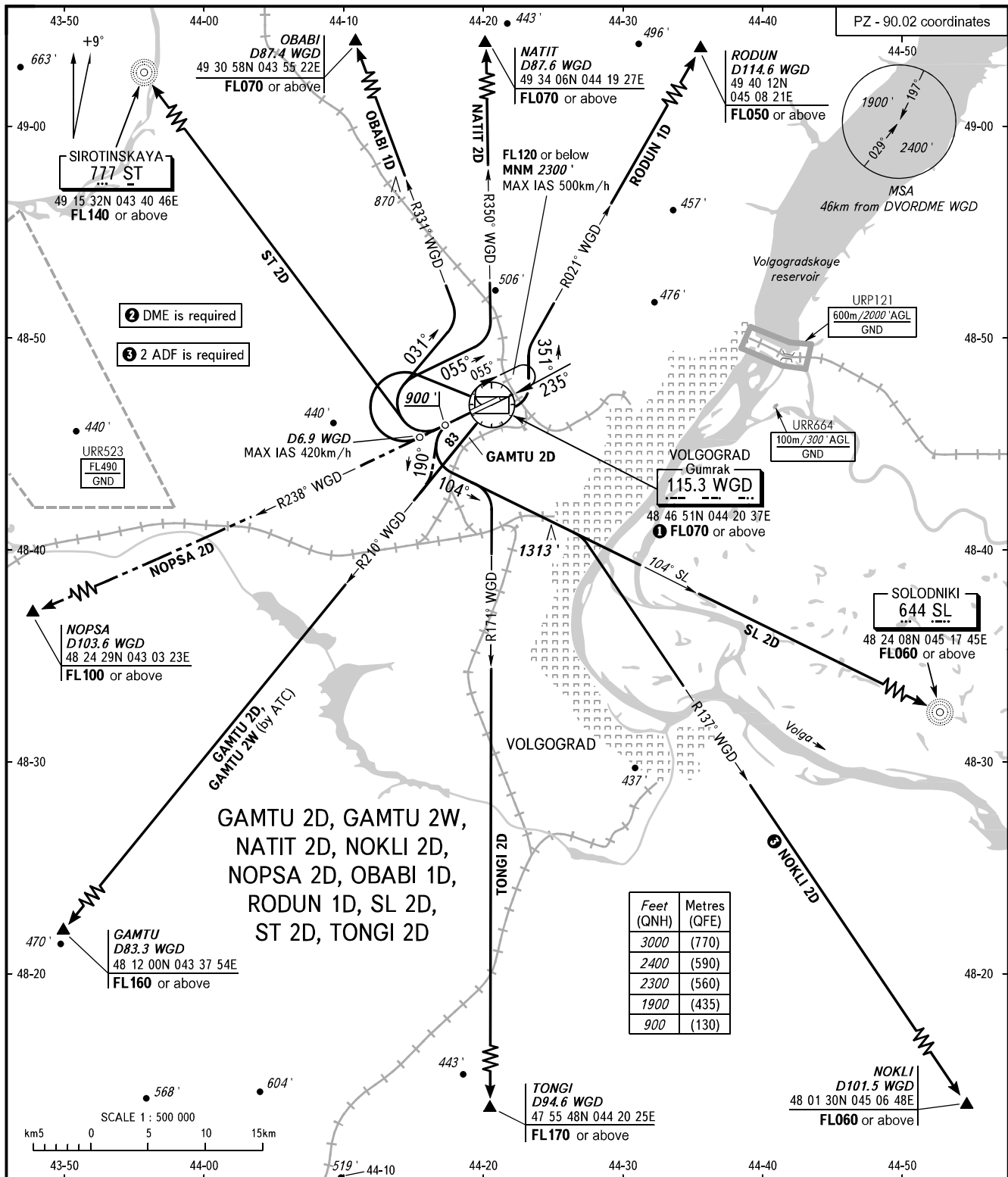


STANDARD DEPARTURE CHART
INSTRUMENT (SID) - ICAO

TRANSITION
ALTITUDE: 3000'

VOLGOGRAD, RUSSIA
GUMRAK
RWY 24



TOWER 128.000
APPROACH 125.300

The minimum climb gradients are as follows (required due to the airspace structure):
- 5.8% up to FL160 for SID GAMTU 2W;
- 5.6% up to FL140 for SID ST 2D;
- 5.1% up to FL170 for SID TONGI 2D.

NOTE:

- For SID GAMTU 2D: climb in holding area to FL070 or above, then proceed to CRP GAMTU.
- For SID GAMTU 2D, GAMTU 2W, NOKLI 2D, NOPSA 2D, OBABI 1D, NATIT 2D, RODUN 1D, TONGI 2D.

BEARINGS AND TRACKS ARE MAGNETIC
ALTITUDES AND ELEVATIONS IN FEET
DISTANCES IN KILOMETRES

Alt set: -QNH(QFE on req);
-hPa(mm on req).