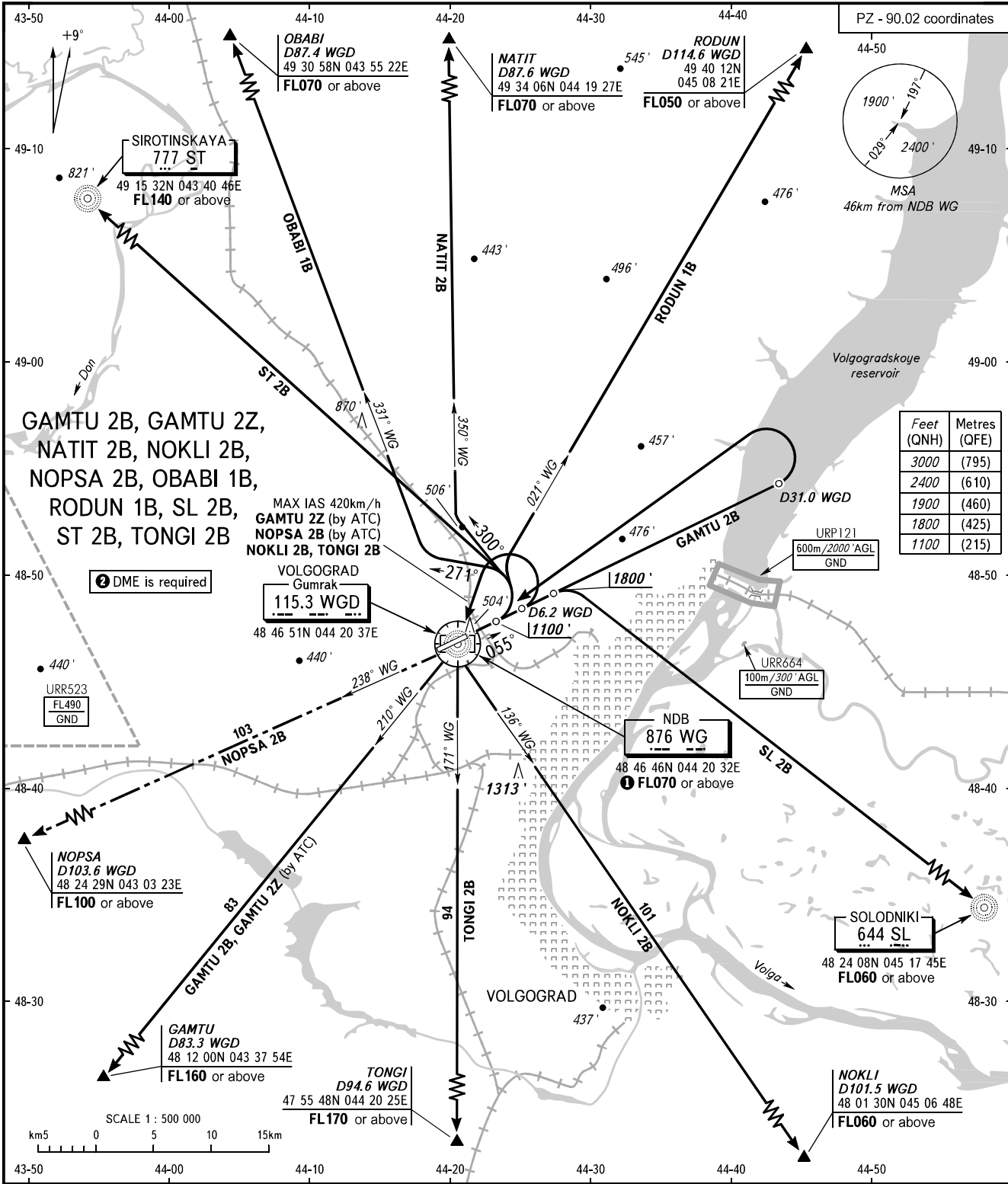


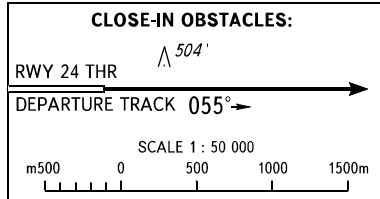
STANDARD DEPARTURE CHART  
INSTRUMENT (SID) - ICAO

TRANSITION  
ALTITUDE: 3000'

VOLGOGRAD, RUSSIA  
GUMRAK  
RWY 06



TOWER APPROACH 128.000  
125.300



The minimum climb gradients are as follows (required due to the airspace structure):

- 4.3% up to FL160 for SID GAMTU 2Z;
- 5.2% up to FL140 for SID ST 2B;
- 3.8% up to FL170 for SID TONGI 2B.

**NOTE:**

- 1 For SID GAMTU 2B.
- 2 For SID GAMTU 2B, GAMTU 2Z, NOKLI 2B, NOPSA 2B, OBABI 1B, NATIT 2B, RODUN 1B, TONGI 2B.

BEARINGS AND TRACKS ARE MAGNETIC  
ALTITUDES AND ELEVATIONS IN FEET  
DISTANCES IN KILOMETRES

Alt set: -QNH(QFE on req);  
-hPa(mm on req).

CHANGE: URP121