

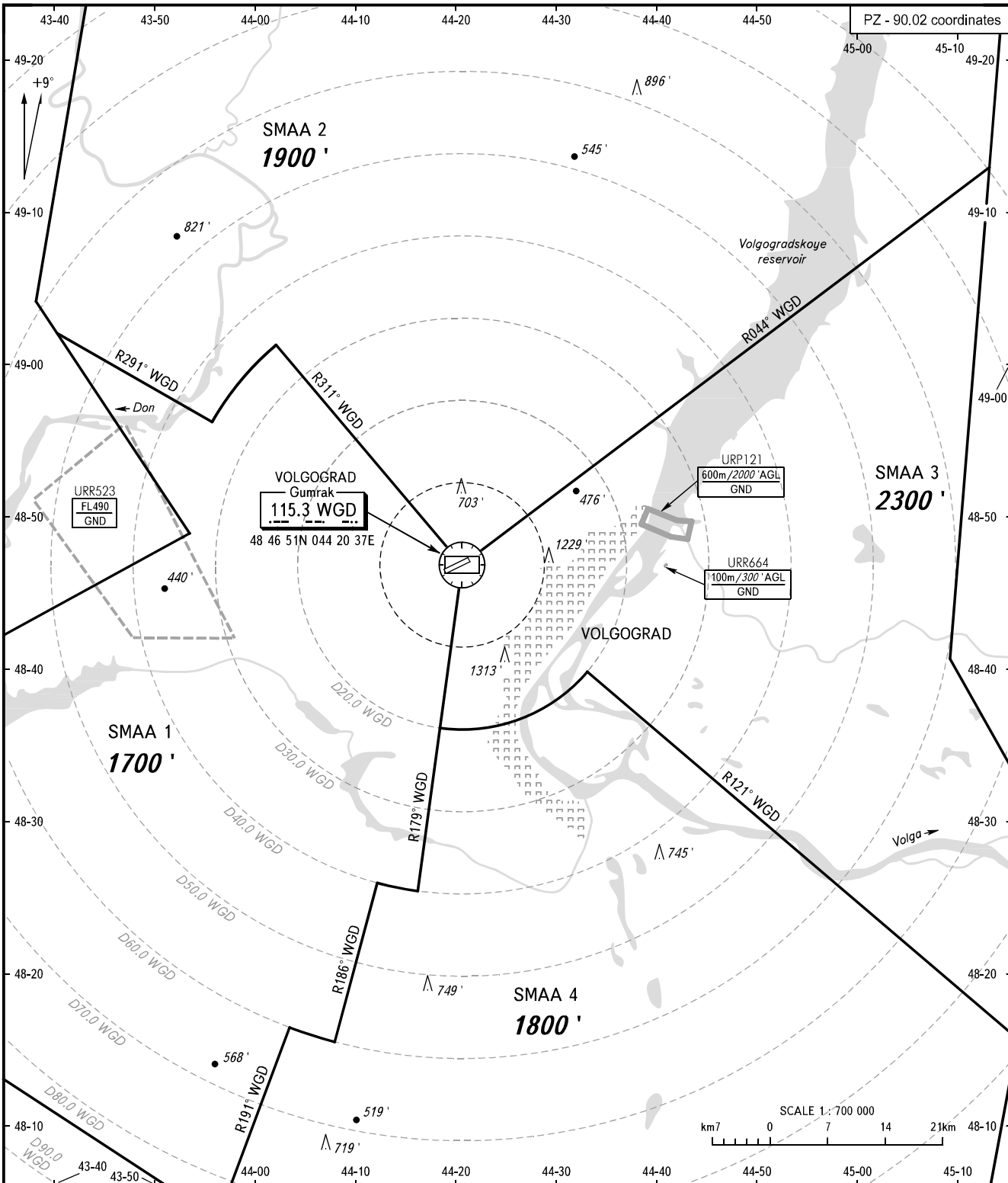
ATC SURVEILLANCE MINIMUM
ALTITUDE CHART - ICAO

ELEV
476'

TRANSITION ALTITUDE: 3000'

VOLGOGRAD, RUSSIA

GUMRAK



APPROACH 125.300
TOWER 128.000

WARNING:

1. The chart may only be used for cross-checking of altitudes assigned while the aircraft is under radar control.
2. When vectoring is carried out under low-temperature conditions, minimum vectoring altitudes for IFR flight must be corrected by altimeter temperature correction.

BEARINGS AND TRACKS ARE MAGNETIC
ALTITUDES AND ELEVATIONS IN FEET
DISTANCES IN KILOMETRES

Alt set: -QNH(QFE on req);
-hPa(mm on req).

CHANGE: URP121

VOLGOGRAD, RUSSIA
GUMRAK

SURVEILLANCE MINIMUM ALTITUDE AREAS		
IDENT	MNM ALT	LATERAL LIMITS (PZ-90.02 coordinates)
SMAA 1	1700'	484651.0N 0442037.0E - 490115.1N 0440204.4E then counterclockwise by arc of a circle radius of 35 KM centred at (484651.0N 0442037.0E) to 485611.2N 0435543.7E - 490156.0N 0434012.5E then along Volgograd/Gumrak CTA boundary to 484852.0N 0435334.0E - 482829.0N 0425851.0E - 481806.0N 0431036.0E - 481444.0N 0433129.0E - 480352.6N 0435643.2E - 481629.2N 0440339.5E then counterclockwise by arc of a circle radius of 60 KM centred at (484651.0N 0442037.0E) to 481532.9N 0440806.3E - 482559.1N 0441214.8E then counterclockwise by arc of a circle radius of 40 KM centred at (484651.0N 0442037.0E) to 482527.3N 0441614.9E - 484651.0N 0442037.0E.
SMAA 2	1900'	484651.0N 0442037.0E - 490115.1N 0440204.4E then counterclockwise by arc of a circle radius of 35 KM centred at (484651.0N 0442037.0E) to 485611.2N 0435543.7E - 490156.0N 0434012.5E then along Volgograd/Gumrak CTA boundary to 490400.0N 0433805.0E - 492928.0N 0434419.0E - 494118.0N 0451728.0E - 491243.3N 0451325.1E - 484651.0N 0442037.0E.
SMAA 3	2300'	484651.0N 0442037.0E - 491243.3N 0451325.1E then along Volgograd/Gumrak CTA boundary to 484031.0N 0450857.0E - 482819.0N 0451900.0E - 481532.6N 0451512.2E - 483950.0N 0443300.9E then clockwise by arc of a circle radius of 20 KM centred at (484651.0N 0442037.0E) to 483609.2N 0441825.5E - 484651.0N 0442037.0E.
SMAA 4	1800'	483950.0N 0443300.9E - 481532.6N 0451512.2E then along Volgograd/Gumrak CTA boundary to 480154.0N 0451111.0E - 475518.0N 0441623.0E - 480352.6N 0435643.2E - 481629.2N 0440339.5E then counterclockwise by arc of a circle radius of 60 KM centred at (484651.0N 0442037.0E) to 481532.9N 0440806.3E - 482559.1N 0441214.8E then counterclockwise by arc of a circle radius of 40 KM centred at (484651.0N 0442037.0E) to 482527.3N 0441614.9E - 483609.2N 0441825.5E then counterclockwise by arc of a circle radius of 20 KM centred at (484651.0N 0442037.0E) to 483950.0N 0443300.9E.